



**Bramscote Walk  
Coventry  
West Midlands  
CV2**

**Offers In Excess Of £280,000**

**bettermove**

# Bramscote Walk

## Coventry

Bettermove are proud to present this 3 bedroom semi-detached house in Coventry.

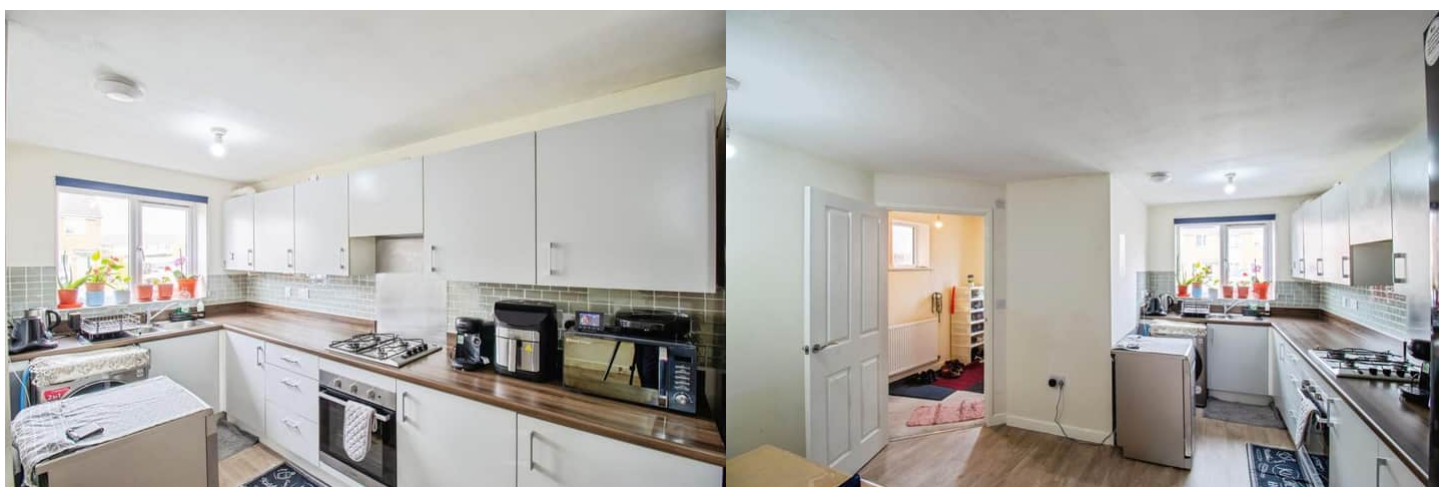
The property benefits from double glazing, and gas central heating throughout, with off street parking available via the driveway.

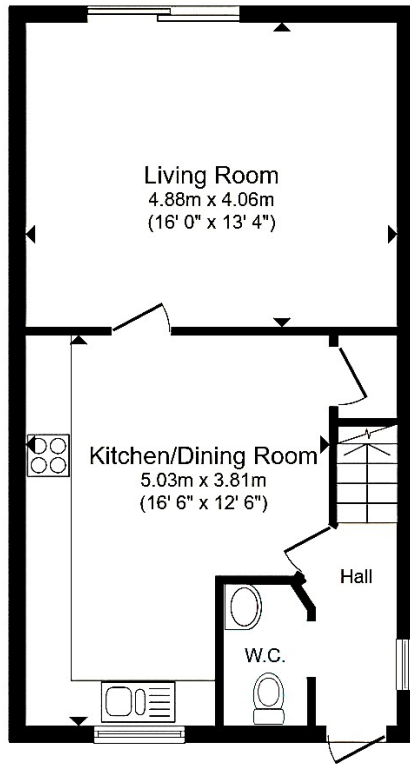
The council tax band is B.

The interior of this beautifully presented property comprises a spacious living room, downstairs WC and fitted kitchen on the ground floor. The first floor consists of 3 bedrooms and the family bathroom. The exterior boasts a private rear garden, perfect for enjoying the summer months.

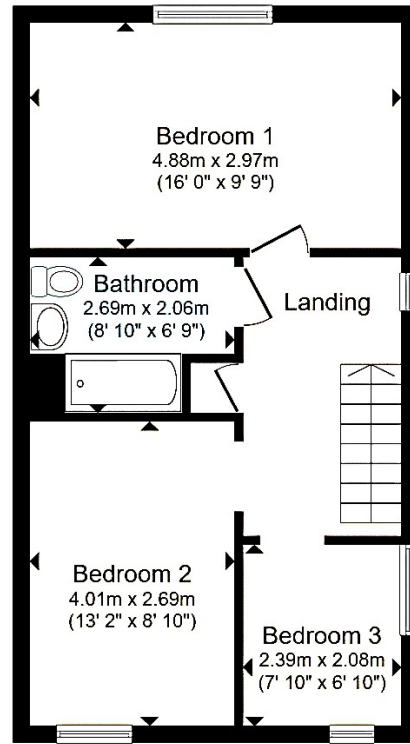
Located in the popular city of Coventry, the property is close to a range of amenities, including shops, supermarkets, restaurants and pubs. Excellent transport connections can be found from Coventry Arena train station (3.1 miles), variety of bus routes and the M6.

This exciting opportunity should not be missed. All enquiries can be made through Bettermove.





**Ground Floor**



**First Floor**

Energy Efficiency Rating		
	Current	Potential
<i>Very energy efficient - lower running costs</i>		
(92+) <b>A</b>		<b>95</b>
(81-91) <b>B</b>	<b>84</b>	
(69-80) <b>C</b>		
(55-68) <b>D</b>		
(39-54) <b>E</b>		
(21-38) <b>F</b>		
(1-20) <b>G</b>		
<i>Not energy efficient - higher running costs</i>		
<b>England, Scotland &amp; Wales</b>	EU Directive 2002/91/EC	

Environmental Impact (CO <sub>2</sub> ) Rating		
	Current	Potential
<i>Very environmentally friendly - lower CO<sub>2</sub> emissions</i>		
(92+) <b>A</b>		<b>97</b>
(81-91) <b>B</b>	<b>87</b>	
(69-80) <b>C</b>		
(55-68) <b>D</b>		
(39-54) <b>E</b>		
(21-38) <b>F</b>		
(1-20) <b>G</b>		
<i>Not environmentally friendly - higher CO<sub>2</sub> emissions</i>		
<b>England, Scotland &amp; Wales</b>	EU Directive 2002/91/EC	



20-22 Bridge End, Leeds, LS1 4DJ  
t: 0330 004 0050 e: hello@bettermove.co.uk  
[www.bettermove.co.uk](http://www.bettermove.co.uk)