

14 Harold Street
Hereford
HR1 2QU

Offers In Excess Of £370,000

bettermove

Harold Street Hereford

Bettermove are proud to present this 6 bedroom HMO semi-detached house in Hereford, available with no forward chain.

The property is currently tenanted and it will be sold with tenants in situ for immediate investment. Rental yields can be obtained through Bettermove.

The property benefits from double glazing, and gas central heating throughout, with on street parking available.

The council tax band is C.

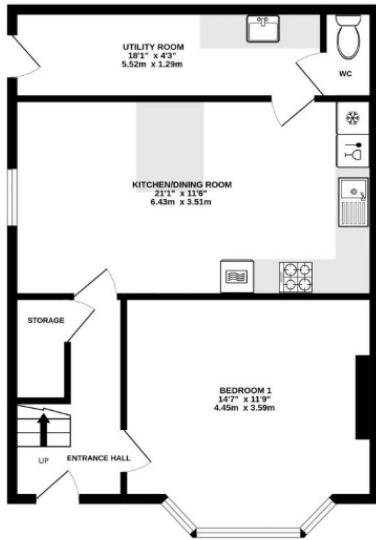
The interior of this beautifully presented property comprises a fitted kitchen/diner, utility room, WC, and one double bedroom on the ground floor. The first floor consists of a further two double bedrooms, a family bathroom, and a shower room, with the further three double bedrooms located on the second floor. The exterior boasts a private rear garden, perfect for enjoying the summer months.

Located in the popular city of Hereford, the property is close to a range of amenities, including shops, supermarkets, restaurants and pubs. Excellent transport connections can be found from Hereford Train Station, a variety of local bus routes, and quick access to the A49

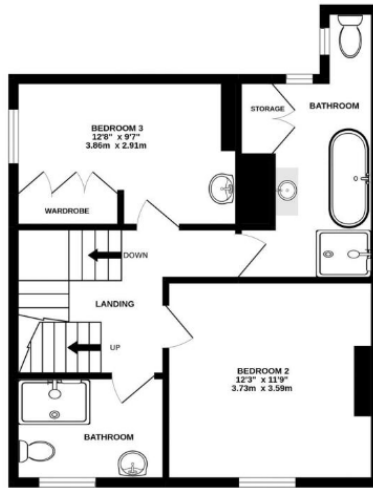
This exciting opportunity should not be missed. All enquiries can be made through Bettermove.



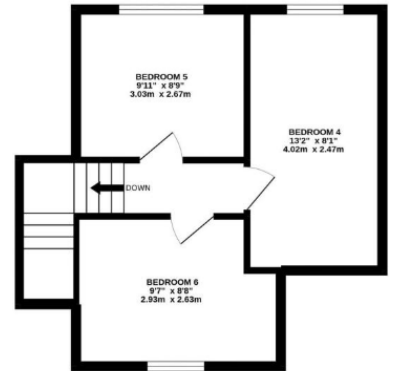
GROUND FLOOR



1ST FLOOR



2ND FLOOR



Energy Efficiency Rating		
	Current	Potential
<i>Very energy efficient - lower running costs</i>		
(92+) A		
(81-91) B		
(69-80) C		80
(55-68) D		
(39-54) E	50	
(21-38) F		
(1-20) G		
<i>Not energy efficient - higher running costs</i>		
England, Scotland & Wales	EU Directive 2002/91/EC	

Environmental Impact (CO ₂) Rating		
	Current	Potential
<i>Very environmentally friendly - lower CO₂ emissions</i>		
(92+) A		
(81-91) B		
(69-80) C		75
(55-68) D		
(39-54) E		
(21-38) F	42	
(1-20) G		
<i>Not environmentally friendly - higher CO₂ emissions</i>		
England, Scotland & Wales	EU Directive 2002/91/EC	



20-22 Bridge End, Leeds, LS1 4DJ
t: 0330 004 0050 e: hello@bettermove.co.uk
www.bettermove.co.uk