



**Moreton Street
Birmingham
West Midlands
B1**

Offers In Excess Of £500,000

bettermove

Moreton Street Birmingham

Bettermove are proud to present this 4 bedroom town house in Birmingham, available with no forward chain.

The property is currently tenanted and it will be sold with tenants in situ for immediate investment. Rental yields can be obtained through Bettermove.

The property benefits from double glazing, and gas central heating throughout, with secure, underground parking available.

The council tax band is E.

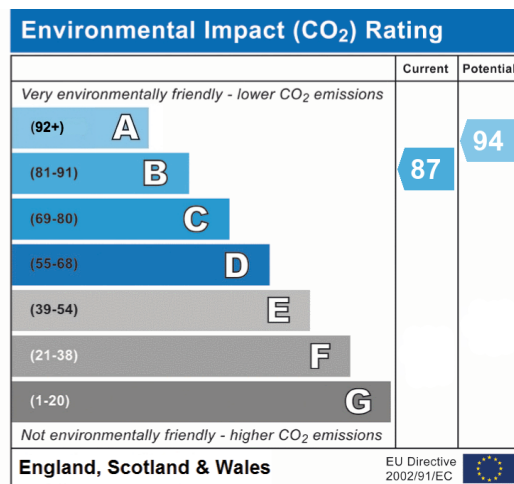
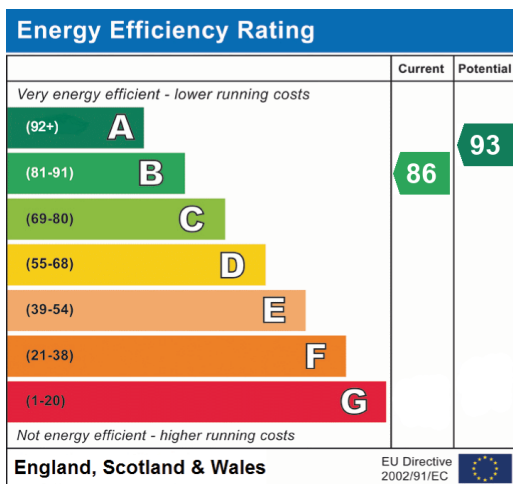
This is a leasehold property with 142 years remaining on the lease; the service charge is £1,890.00 per annum.

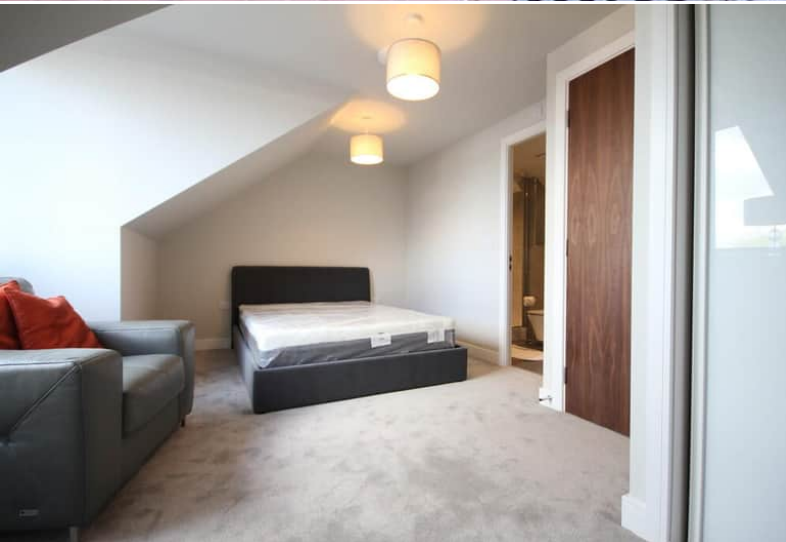
This beautifully presented property spans four floors. The ground floor features a spacious living room, fitted kitchen, and a convenient WC. On the first floor, you'll find a second reception room and a double bedroom, while the second floor houses two further double bedrooms, one with a private en-suite, alongside a family bathroom. The top floor is dedicated to the master bedroom, complete with its own en-suite. Outside, the property offers a private rear garden, thoughtfully designed with both patio and artificial lawn areas, perfect for enjoying the summer months.

Located in the popular jewellery quarter of Birmingham, the property is close to a range of amenities, including shops, supermarkets, restaurants, pubs, and schools. Excellent transport connections can be found from Jewellery Quarter Station

This exciting opportunity should not be missed. All enquiries can be made through Bettermove.







20-22 Bridge End, Leeds, LS1 4DJ
t: 0330 004 0050 e: hello@bettermove.co.uk
www.bettermove.co.uk