



**Prestbury Green
Shrewsbury
Shropshire
SY1 3JX**

Offers in Excess of £155,000

bettermove

Prestbury Green Shrewsbury

Bettermove are proud to present this 3 bedroom terraced house in Shrewsbury, available with no forward chain.

The property is currently tenanted and it will be sold with tenants in situ for immediate investment. Rental yields can be obtained through Bettermove.

The property benefits from double glazing, and gas central heating throughout, with parking available to the rear of the property.

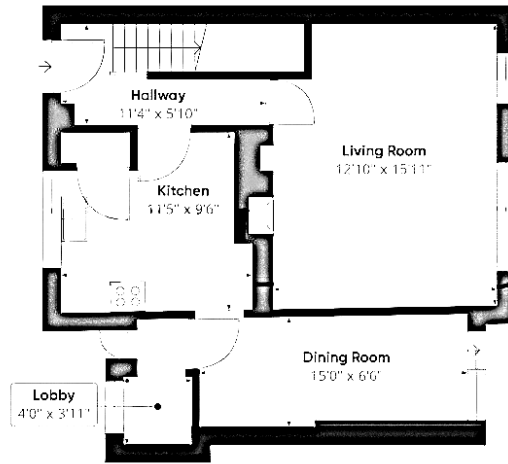
The council tax band is B.

The interior of this well presented property comprises a spacious living room, dining room and fitted kitchen on the ground floor. The first floor consists of three bedrooms, including two doubles, and one single, alongside the family bathroom. The exterior boasts a front lawned garden, and a private rear garden, with both patio and lawn areas, perfect for enjoying the summer months.

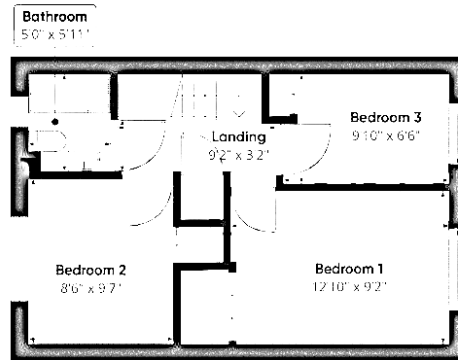
Located in the popular town of Shrewsbury, the property is close to a range of amenities, including shops, supermarkets, restaurants, pubs, and schools. Excellent transport connections can be found from Shrewsbury Train Station, a variety of local bus routes, and quick access to the A5.

This exciting opportunity should not be missed. All enquiries can be made through Bettermove.





Floor 0



Floor 1

| Energy Efficiency Rating | | |
|---|---------|-----------|
| | Current | Potential |
| <i>Very energy efficient - lower running costs</i> | | |
| (92+) A | | |
| (81-91) B | | |
| (69-80) C | | |
| (55-68) D | | |
| (39-54) E | | |
| (21-38) F | | |
| (1-20) G | | |
| <i>Not energy efficient - higher running costs</i> | | |
| | 63 | 83 |
| England, Scotland & Wales EU Directive 2002/91/EC | | |

| Environmental Impact (CO ₂) Rating | | |
|---|---------|-----------|
| | Current | Potential |
| <i>Very environmentally friendly - lower CO₂ emissions</i> | | |
| (92+) A | | |
| (81-91) B | | |
| (69-80) C | | |
| (55-68) D | | |
| (39-54) E | | |
| (21-38) F | | |
| (1-20) G | | |
| <i>Not environmentally friendly - higher CO₂ emissions</i> | | |
| | 57 | 80 |
| England, Scotland & Wales EU Directive 2002/91/EC | | |



20-22 Bridge End, Leeds, LS1 4DJ
t: 0330 004 0050 e: hello@bettermove.co.uk
www.bettermove.co.uk