



Chapel Street
Hoyland
Barnsley
South Yorkshire
S74

Offers in Excess of £120,000

bettermove 

Chapel Street Barnsley

Bettermove are proud to present this 2 bedroom terraced house in Hoyland, available with no forward chain.

The property is currently tenanted and it will be sold with tenants in situ for immediate investment. Rental yields can be obtained through Bettermove.

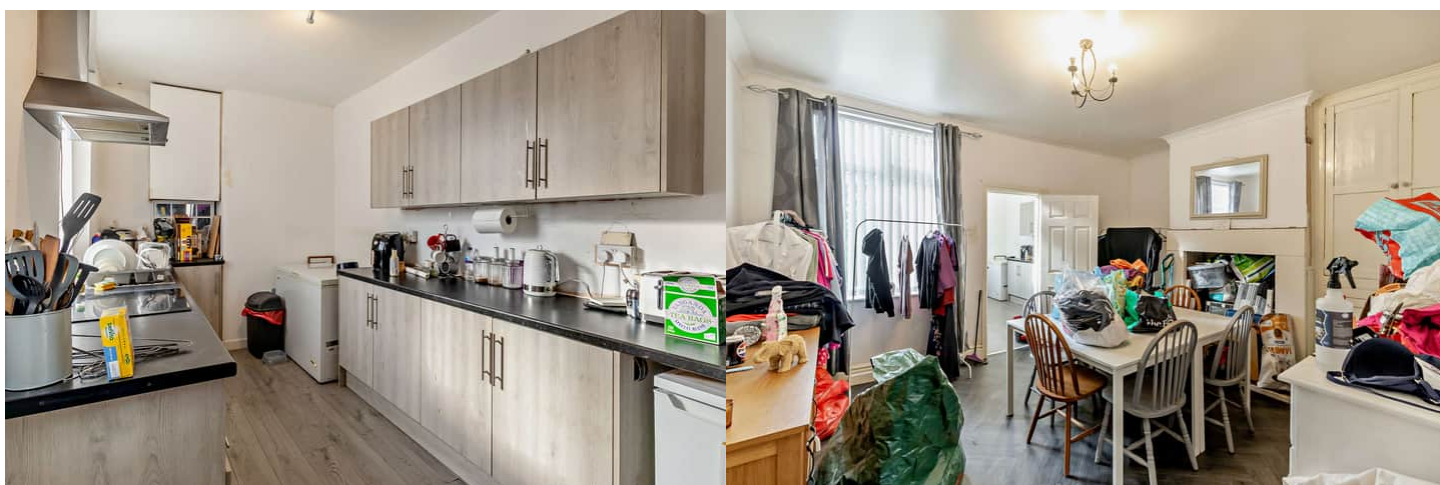
The property benefits from double glazing, and gas central heating throughout, with on street parking available.

The council tax band is A.

The interior of this well presented property comprises a spacious living room, dining room and fitted kitchen on the ground floor. The first floor consists of two double bedrooms, alongside the family bathroom, with the attic converted into an additional bedroom. The exterior boasts a private rear garden, perfect for enjoying the summer months.

Located in the popular town of Hoyland, Barnsley, the property is close to a range of amenities, including shops, supermarkets, restaurants, pubs, and schools. Excellent transport connections can be found from Elsecar Train Station, a variety of local bus routes, and quick access to the M1.

This exciting opportunity should not be missed. All enquiries can be made through Bettermove.



Chapel Street, Hoyland, Barnsley
Approximate Gross Internal Area
127 Sq M/1368 Sq Ft



Ground Floor

First Floor

Second Floor

Please note that the location of doors, windows and other items are approximate and this floorplan is to be used for illustrative purposes only. Unauthorized reproduction is prohibited.



20-22 Bridge End, Leeds, LS1 4DJ
t: 0330 004 0050 e: hello@bettermove.co.uk
www.bettermove.co.uk