



**Woodland Mews  
London  
SE13**

**Offers In Excess Of £555,000**

**bettermove**

# Woodland Mews

## London

Bettermove are proud to present this 2 bedroom bungalow in London. Available with no forward chain.

The property is currently tenanted and it will be sold with tenants in situ for immediate investment. Rental yields can be obtained through Bettermove.

The property benefits from double glazing, underfloor heating and gas central heating throughout, with off street parking available via the allocated space.

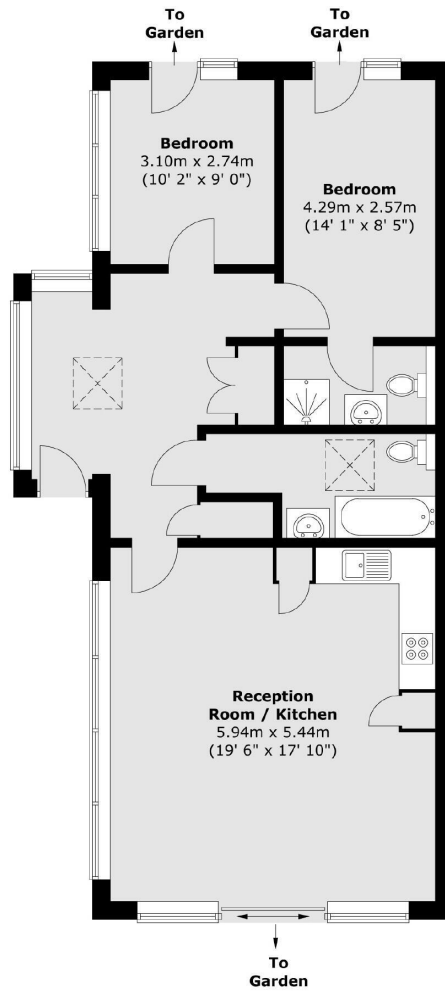
The council tax band is D.

The interior of this beautifully presented property comprises a spacious living room and fitted kitchen and dining area, as well as the 2 bedrooms with the master bedroom including an on-suite and the family bathroom. The exterior boasts a private rear garden, perfect for enjoying the summer months.

Located in the popular town of X, the property is close to a range of amenities, including shops, supermarkets, restaurants and pubs. Excellent transport connections can be found from St Johns train station (0.4 miles), variety of bus routes and the A2.

This exciting opportunity should not be missed. All enquiries can be made through Bettermove.





Total area (approx.) : 80 sq. m (861 sq. ft)

Energy Efficiency Rating		
	Current	Potential
<i>Very energy efficient - lower running costs</i>		
(92+) <b>A</b>		<b>93</b>
(81-91) <b>B</b>		
(69-80) <b>C</b>		
(55-68) <b>D</b>		
(39-54) <b>E</b>		
(21-38) <b>F</b>		
(1-20) <b>G</b>		
<i>Not energy efficient - higher running costs</i>		
<b>England, Scotland &amp; Wales</b>	EU Directive 2002/91/EC	

Environmental Impact (CO <sub>2</sub> ) Rating		
	Current	Potential
<i>Very environmentally friendly - lower CO<sub>2</sub> emissions</i>		
(92+) <b>A</b>		<b>94</b>
(81-91) <b>B</b>		
(69-80) <b>C</b>		
(55-68) <b>D</b>		
(39-54) <b>E</b>		
(21-38) <b>F</b>		
(1-20) <b>G</b>		
<i>Not environmentally friendly - higher CO<sub>2</sub> emissions</i>		
<b>England, Scotland &amp; Wales</b>	EU Directive 2002/91/EC	



20-22 Bridge End, Leeds, LS1 4DJ  
t: 0330 004 0050 e: [hello@bettermove.co.uk](mailto:hello@bettermove.co.uk)  
[www.bettermove.co.uk](http://www.bettermove.co.uk)