



Eign Road
Hereford
HR1

Offers In Excess Of £390,000

bettermove

Eign Road Hereford

Bettermove are proud to present this 8 bedroom HMO terraced house in Hereford, available with no forward chain.

The property is currently tenanted and it will be sold with tenants in situ for immediate investment. Rental yields can be obtained through Bettermove.

The property benefits from double glazing, and gas central heating throughout.

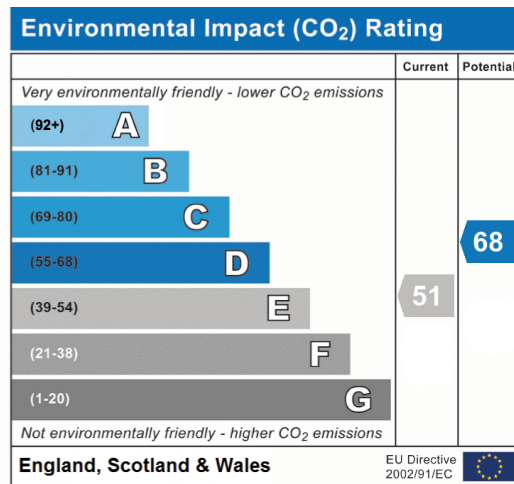
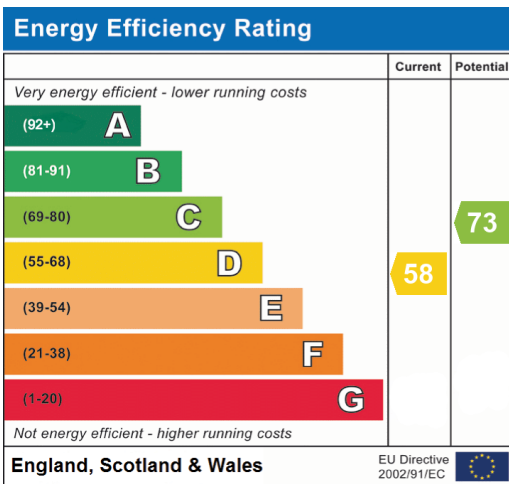
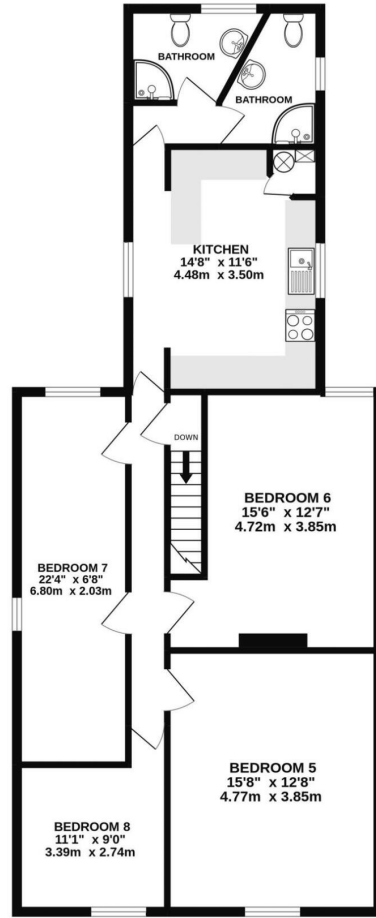
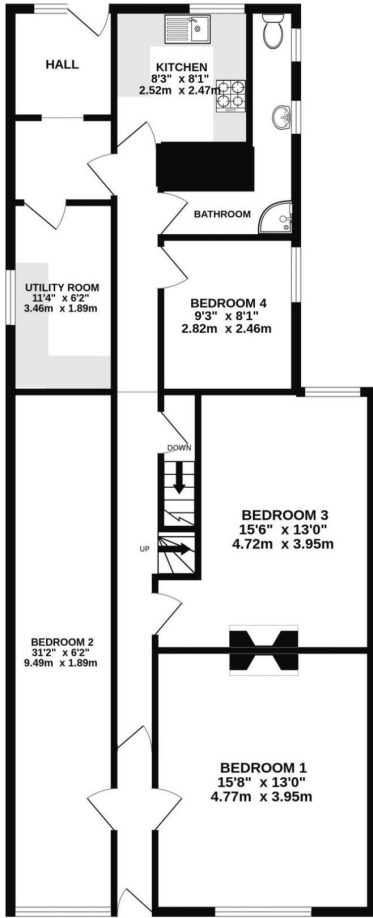
The council tax band is E.

The interior of this beautifully presented property comprises a fitted kitchen, utility room, shower room, and four bedrooms on the ground floor. The first floors consists a second kitchen, two additional shower rooms, and the remaining four bedrooms.

Located in the popular city of Hereford, the property is close to a range of amenities, including shops, supermarkets, restaurants and pubs. Excellent transport connections can be found from Hereford Train Station, a variety of local bus routes, and quick access to the A49

This exciting opportunity should not be missed. All enquiries can be made through Bettermove.







20-22 Bridge End, Leeds, LS1 4DJ
t: 0330 004 0050 e: hello@bettermove.co.uk
www.bettermove.co.uk