



**Eastgate Street
Winchester
Hampshire
SO23**

Offers In Excess Of £295,000

bettermove

Eastgate Street Winchester

Bettermove are proud to present this 2 bedroom flat in Winchester, available with no forward chain.

The property is currently tenanted and it will be sold with tenants in situ for immediate investment. Rental yields can be obtained through Bettermove.

The property benefits from double glazing, and gas central heating throughout.

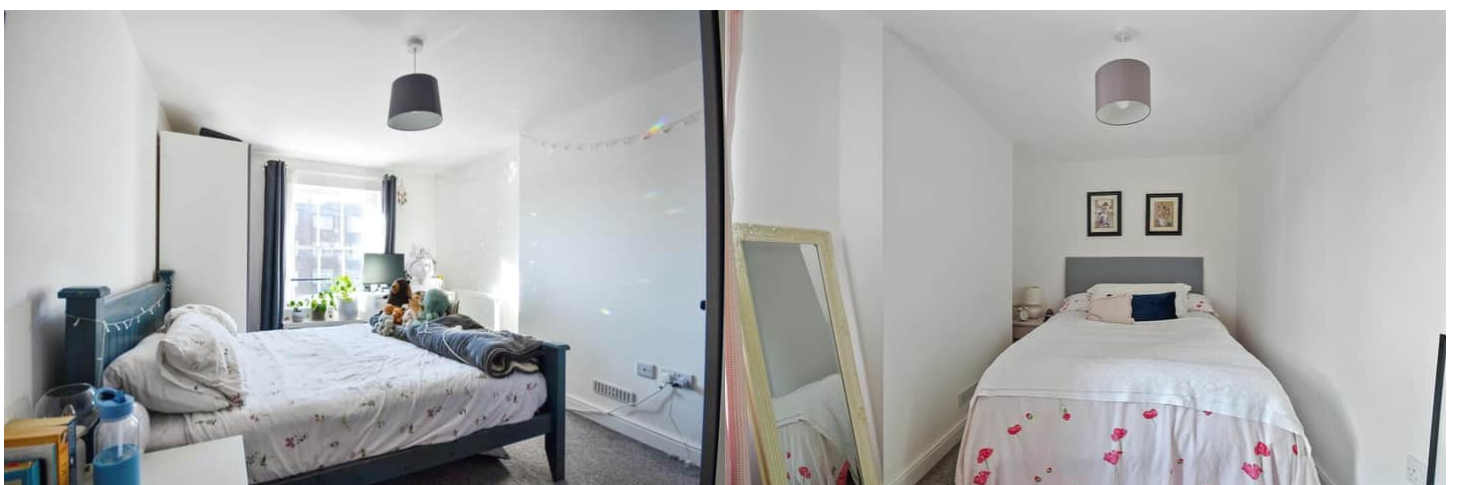
The council tax band is B.

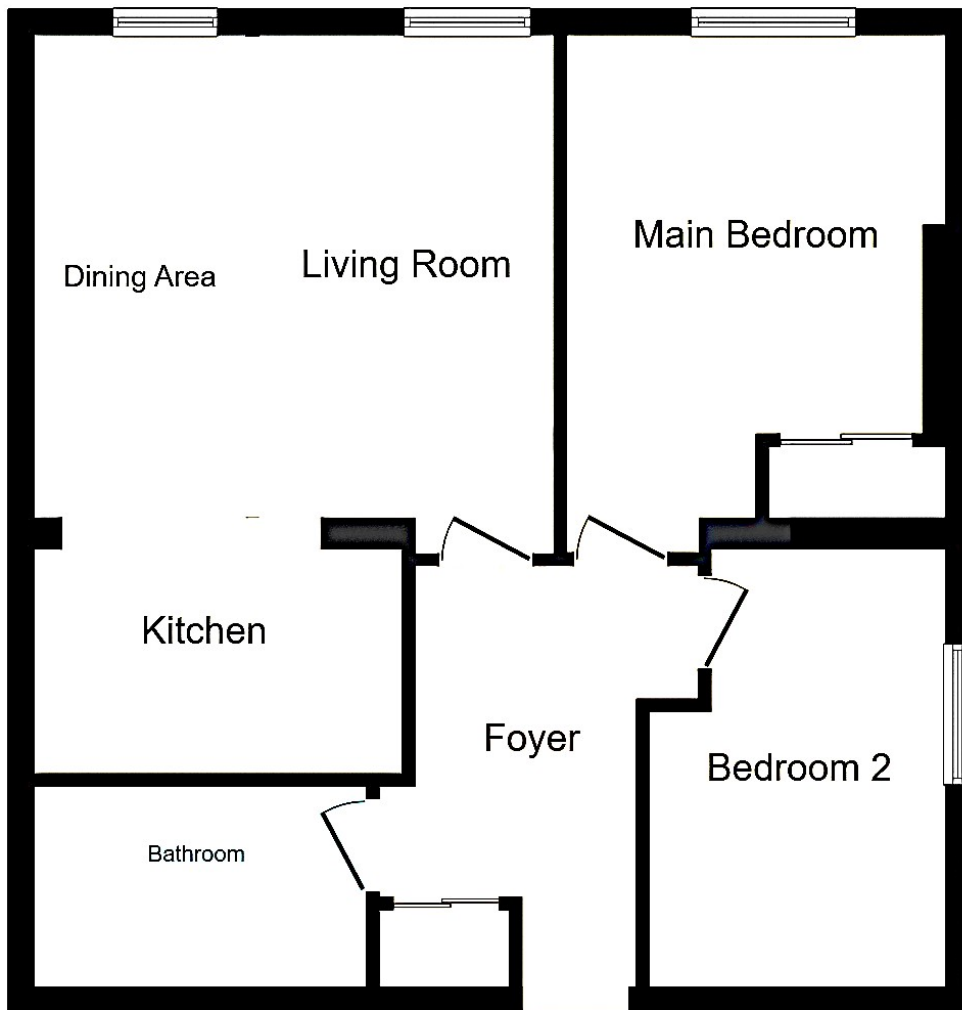
This is a leasehold property with 994 years remaining on the lease; with a peppercorn ground rent, and the service charge is £1,200.00 per annum.

The interior of this beautifully presented property comprises a spacious, open plan living/dining area, fitted kitchen, two double bedrooms, and a family bathroom.

Located in the popular city of Winchester, the property is close to a range of amenities, including shops, supermarkets, restaurants and pubs. Excellent transport connections can be found from Winchester Train Station, a variety of local bus routes, and quick access to the M3.

This exciting opportunity should not be missed. All enquiries can be made through Bettermove.





Energy Efficiency Rating		
	Current	Potential
<i>Very energy efficient - lower running costs</i>		
(92+) A		
(81-91) B		
(69-80) C	79	79
(55-68) D		
(39-54) E		
(21-38) F		
(1-20) G		
<i>Not energy efficient - higher running costs</i>		
England, Scotland & Wales	EU Directive 2002/91/EC	

Environmental Impact (CO ₂) Rating		
	Current	Potential
<i>Very environmentally friendly - lower CO₂ emissions</i>		
(92+) A		
(81-91) B		
(69-80) C	81	81
(55-68) D		
(39-54) E		
(21-38) F		
(1-20) G		
<i>Not environmentally friendly - higher CO₂ emissions</i>		
England, Scotland & Wales	EU Directive 2002/91/EC	



20-22 Bridge End, Leeds, LS1 4DJ
t: 0330 004 0050 e: hello@bettermove.co.uk
www.bettermove.co.uk