



**68, Kingswood Place
Norwich Avenue West
Bournemouth
Dorset
BH2**

Offers In Excess Of £145,000

bettermove

Norwich Avenue West Bournemouth

Bettermove are proud to present this 1 bedroom flat in Bournemouth, available with no forward chain.

The property is currently tenanted and it will be sold with tenants in situ for immediate investment. Rental yields can be obtained through Bettermove.

The property benefits from double glazing, and electric heating throughout, with allocated parking available.

The council tax band is B.

This is a leasehold property with 134 years remaining on the lease; the ground rent is £250.00 per annum, and the service charge is approximately £1,700.00 per annum.

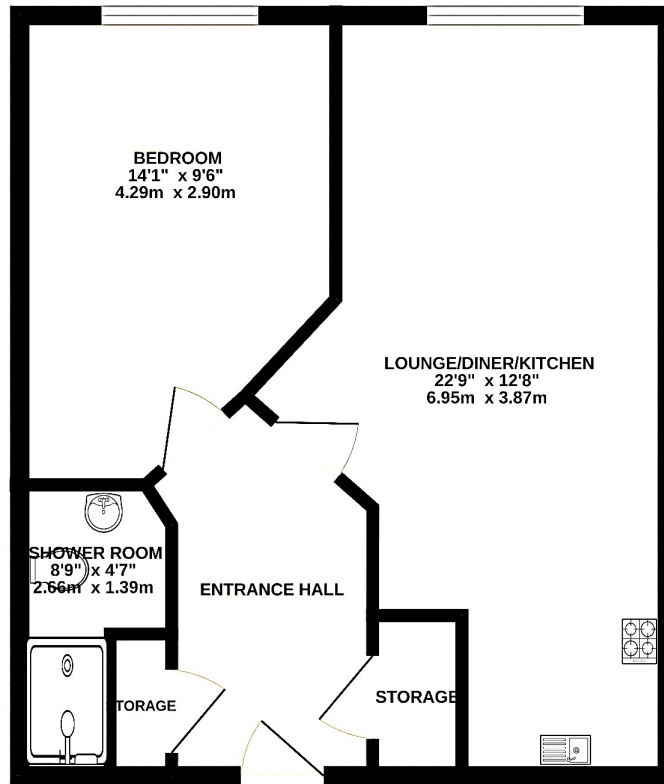
The interior of this beautifully presented property comprises a spacious, open-plan living/dining/kitchen area, one double bedroom, and a shower room.

Located in the popular coastal town of Bournemouth, the property is close to a range of amenities, including shops, supermarkets, restaurants, pubs, and a short distance to the seafront. Excellent transport connections can be found from Bournemouth Train Station, a variety of local bus routes, and quick access to the A35.

This exciting opportunity should not be missed. All enquiries can be made through Bettermove.



SECOND FLOOR



Energy Efficiency Rating		
	Current	Potential
<i>Very energy efficient - lower running costs</i>		
(92+) A		
(81-91) B	86	87
(69-80) C		
(55-68) D		
(39-54) E		
(21-38) F		
(1-20) G		
<i>Not energy efficient - higher running costs</i>		
England, Scotland & Wales	EU Directive 2002/91/EC	

Environmental Impact (CO ₂) Rating		
	Current	Potential
<i>Very environmentally friendly - lower CO₂ emissions</i>		
(92+) A	95	95
(81-91) B		
(69-80) C		
(55-68) D		
(39-54) E		
(21-38) F		
(1-20) G		
<i>Not environmentally friendly - higher CO₂ emissions</i>		
England, Scotland & Wales	EU Directive 2002/91/EC	

20-22 Bridge End, Leeds, LS1 4DJ
t: 0330 004 0050 e: hello@bettermove.co.uk
www.bettermove.co.uk