



**Lily Court
Fullbrook Drive
Basingstoke
Hampshire
RG21**

Offers In Excess Of £310,000

bettermove

Fullbrook Drive Hampshire

Bettermove are proud to present this 2 bedroom flat in Basingstoke.

The property benefits from double glazing, and gas central heating throughout, with off street parking available via allocated parking.

The council tax band is C.

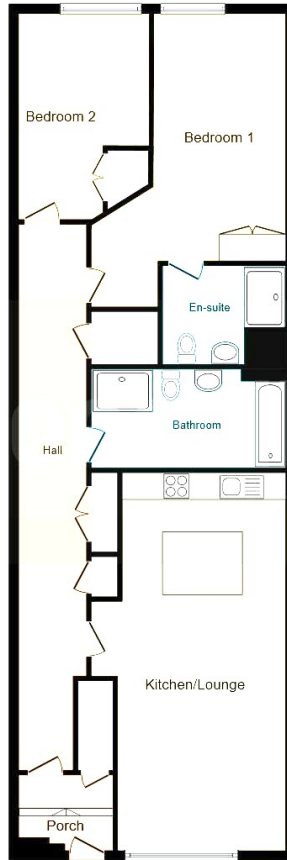
This is a leasehold property with 994 years remaining on the lease; the ground rent is £200pa and the service charge is £130pcm.

The interior of this beautifully presented property comprises a spacious living and dining area and fitted kitchen, as well as the 2 bedrooms with one including an on-suite and the family bathroom. The exterior boasts a private rear garden, perfect for enjoying the summer months.

Located in the popular town of Basingstoke, the property is close to a range of amenities, including shops, supermarkets, restaurants and pubs. Excellent transport connections can be found from Basingstoke train station (05 miles), variety of bus routes and the M3.

This exciting opportunity should not be missed. All enquiries can be made through Bettermove.





This floorplan is for illustrative purposes only and is not drawn to scale. Measurements, floor-areas, openings and orientations are approximate. They should not be relied upon for any purpose and do not form any part of an agreement. No liability is taken for any error or mis-statement. All parties must rely on their own inspections.

Energy Efficiency Rating		
	Current	Potential
<i>Very energy efficient - lower running costs</i>		
(92+) A		
(81-91) B		
(69-80) C	81	81
(55-68) D		
(39-54) E		
(21-38) F		
(1-20) G		
<i>Not energy efficient - higher running costs</i>		
England, Scotland & Wales	EU Directive 2002/91/EC	

Environmental Impact (CO ₂) Rating		
	Current	Potential
<i>Very environmentally friendly - lower CO₂ emissions</i>		
(92+) A		
(81-91) B		
(69-80) C	82	82
(55-68) D		
(39-54) E		
(21-38) F		
(1-20) G		
<i>Not environmentally friendly - higher CO₂ emissions</i>		
England, Scotland & Wales	EU Directive 2002/91/EC	



20-22 Bridge End, Leeds, LS1 4DJ
t: 0330 004 0050 e: hello@bettermove.co.uk
www.bettermove.co.uk