



**Heol Y Ffynnon
Bradley
Wrexham
LL11**

Offers in Excess of £190,000

bettermove

Heol Y Ffynnon

Wrexham

Bettermove are proud to present this 3 bedroom semi-detached house in Bradley.

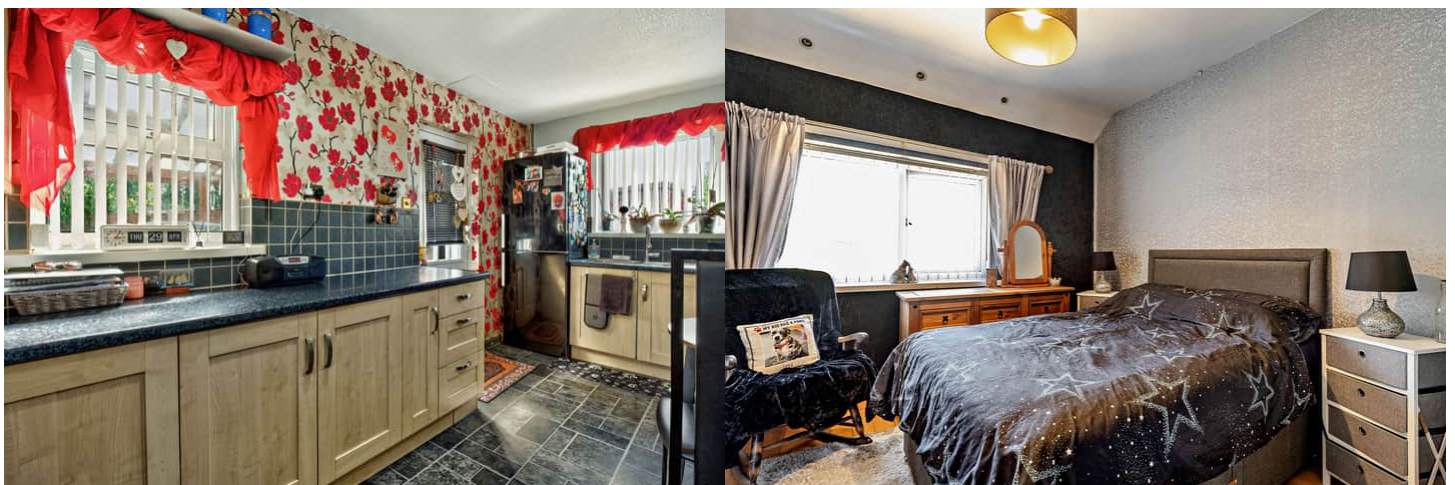
The property benefits from double glazing, and gas central heating throughout, with off street parking available via the driveway.

The council tax band is C.

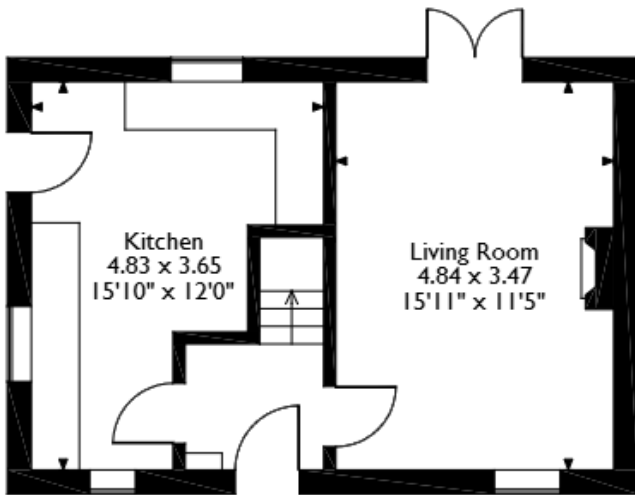
The interior of this beautifully presented property comprises a spacious living room, and fitted kitchen on the ground floor. The first floor consists of three bedrooms, including two doubles, and one single, alongside the family bathroom. The exterior boasts a private rear garden, with lawn, decking and a seating area, perfect for enjoying the summer months.

Located in the sought after village of Bradley, Wrexham, the property is close to a range of amenities, including shops, supermarkets, restaurants, pubs, and schools. Excellent transport connections can be found from Gwersyllt Train Station, a variety of local bus routes, and quick access to the A483, leading to Chester.

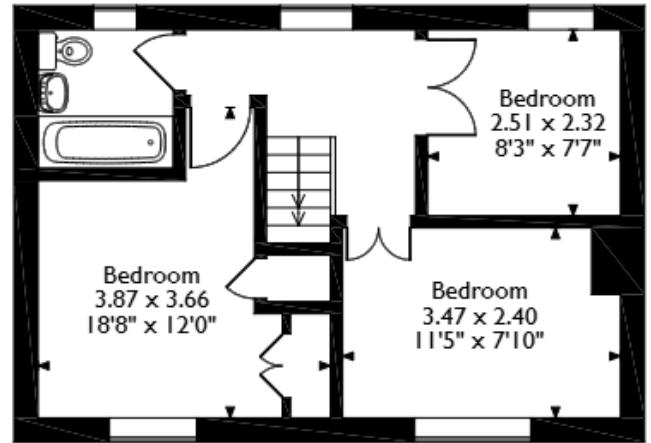
This exciting opportunity should not be missed. All enquiries can be made through Bettermove.



Heol Y Ffynnon, Bradley, Wrexham
Approximate Gross Internal Area
70 Sq M/754 Sq Ft



Ground Floor



First Floor

Please note that the location of doors, windows and other items are approximate and this floorplan is to be used for illustrative purposes only. Unauthorized reproduction is prohibited.



20-22 Bridge End, Leeds, LS1 4DJ
t: 0330 004 0050 e: hello@bettermove.co.uk
www.bettermove.co.uk