



York Road
London
W3

Offers in Excess of £335,000

bettermove

York Road London

Bettermove are proud to present this 1 bedroom flat in London, available with no forward chain.

The property benefits from double glazing, and gas central heating throughout, with on street, permit parking available.

The council tax band is C.

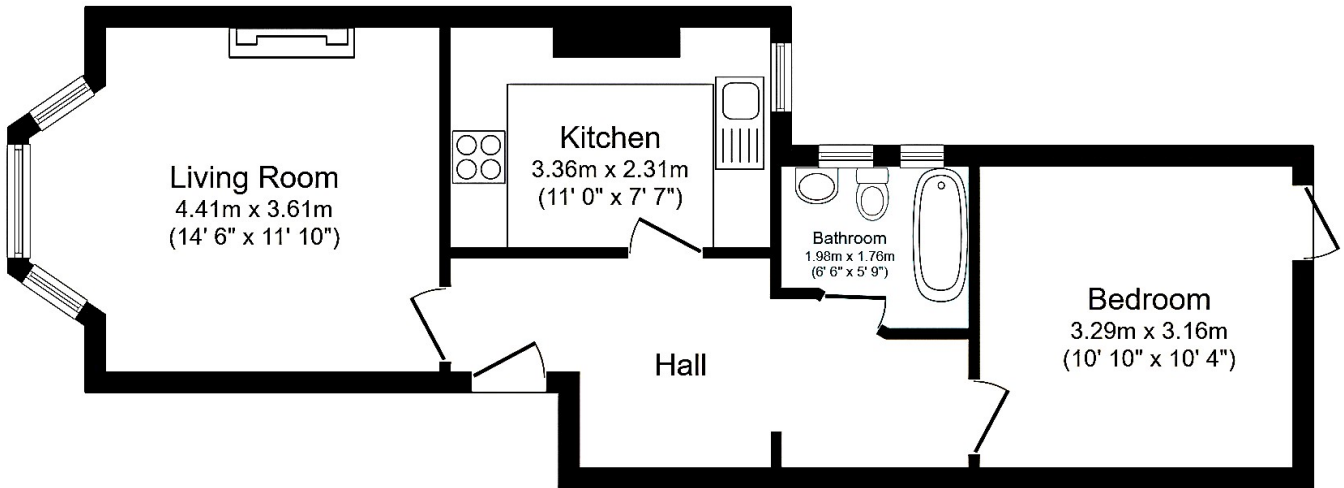
This is a leasehold property with 79 years remaining on the lease; the ground rent is £30.00 and the service charge is £1,200.00 every 6 months.


The interior of this well presented, first floor property comprises a spacious living room, fitted kitchen, one double bedroom, and a family bathroom. The exterior boasts communal grounds, accessed via the fire escape, perfect for enjoying the summer months.


Located within the popular London Borough of Ealing, the property is close to a range of amenities, including shops, supermarkets, restaurants and pubs. Excellent transport connections can be found from Acton Main Line Station, giving links on the Elizabeth line, a variety of local bus routes, and quick access to the M4.

This exciting opportunity should not be missed. All enquiries can be made through Bettermove.





Energy Efficiency Rating		
	Current	Potential
<i>Very energy efficient - lower running costs</i>		
(92+) A		
(81-91) B		
(69-80) C		
(55-68) D		
(39-54) E		
(21-38) F		
(1-20) G		
<i>Not energy efficient - higher running costs</i>		
	72	79
England, Scotland & Wales	EU Directive 2002/91/EC 	

Environmental Impact (CO ₂) Rating		
	Current	Potential
<i>Very environmentally friendly - lower CO₂ emissions</i>		
(92+) A		
(81-91) B		
(69-80) C		
(55-68) D		
(39-54) E		
(21-38) F		
(1-20) G		
<i>Not environmentally friendly - higher CO₂ emissions</i>		
	72	82
England, Scotland & Wales	EU Directive 2002/91/EC 	



20-22 Bridge End, Leeds, LS1 4DJ
t: 0330 004 0050 e: hello@bettermove.co.uk
www.bettermove.co.uk