



Little Whyte
Ramsey
Huntingdon
Cambridgeshire
PE26

Offers in Excess of £95,000

bettermove 

Little Whyte Huntingdon

Bettermove are proud to present this 1 bedroom flat in Ramsey.

The property benefits from double glazing, and electric heating throughout, with on street parking available.

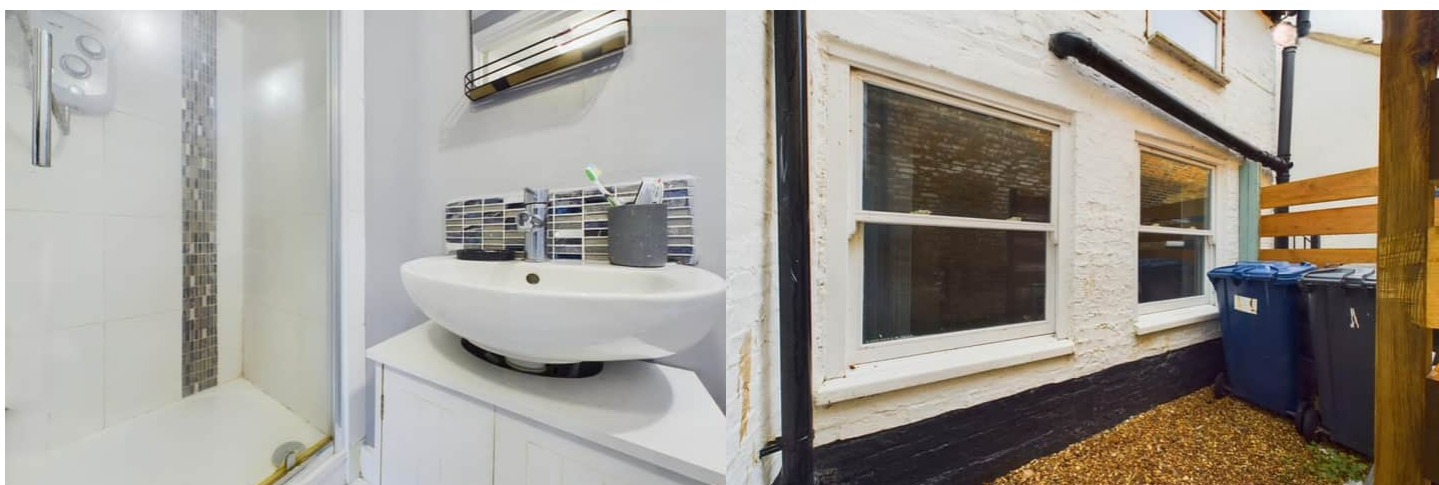
The council tax band is A.

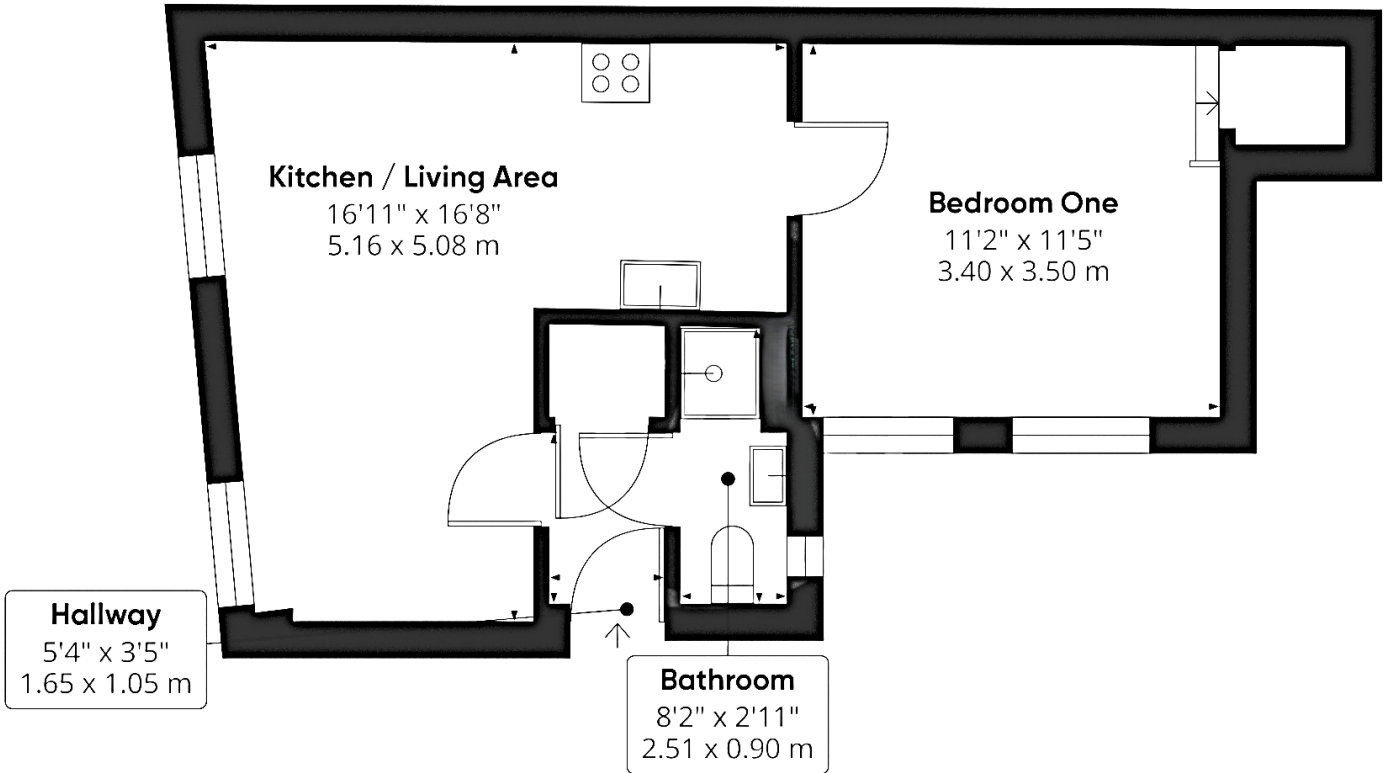
This is a leasehold property with 983 years remaining on the lease.

The interior of this beautifully presented, ground floor flat comprises a spacious, open-plan living/kitchen area, one double bedroom, and a shower room. The property further benefits from a private outside seating area, perfect for enjoying the summer months.

Located in the popular town of Ramsey, Huntingdon, the property is close to a range of amenities, including shops, supermarkets, restaurants and pubs. Excellent transport connections can be found from Whittlesea Train Station (9.7 miles), a variety of local bus routes, and quick access to the A1(M).

This exciting opportunity should not be missed. All enquiries can be made through Bettermove.





Energy Efficiency Rating		
	Current	Potential
<i>Very energy efficient - lower running costs</i>		
(92+) A		
(81-91) B		
(69-80) C		76
(55-68) D		
(39-54) E	43	
(21-38) F		
(1-20) G		
<i>Not energy efficient - higher running costs</i>		
England, Scotland & Wales	EU Directive 2002/91/EC	

Environmental Impact (CO ₂) Rating		
	Current	Potential
<i>Very environmentally friendly - lower CO₂ emissions</i>		
(92+) A		
(81-91) B		
(69-80) C		70
(55-68) D		
(39-54) E	49	
(21-38) F		
(1-20) G		
<i>Not environmentally friendly - higher CO₂ emissions</i>		
England, Scotland & Wales	EU Directive 2002/91/EC	

20-22 Bridge End, Leeds, LS1 4DJ
t: 0330 004 0050 e: hello@bettermove.co.uk
www.bettermove.co.uk