



St Michael's Road  
Bournemouth  
Dorset  
BH2

Offers in Excess of £840,000

bettermove 

# St Michaels Road Bournemouth

Bettermove are proud to present this 7 bedroom hotel in Bournemouth, available with no forward chain.

This property is a seven-bedroom hotel with C1 use, and can also be used as an Air BnB, sleeping up to 24 guests, with the lower ground floor apartment, with internal stairs, sleeping up to 3 guests. (27 in total). Potential income can be obtained through Bettermove.

The property benefits from double glazing, and gas central heating throughout, with on street parking available.

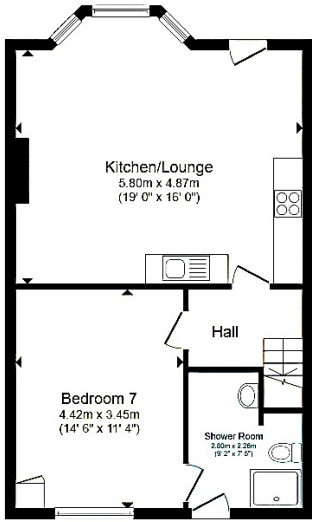
The interior of this beautifully presented, recently renovated property comprises an apartment on the lower ground floor, with one double bedroom, an open-plan living/kitchen area, and a shower room. The remaining floors are accessible via a communal front entrance, the ground floor consists of a communal WC, two double bedrooms, both benefitting from private en-suites, the further four bedrooms are situated across the remaining floors, alongside a kitchen/diner, and two communal shower rooms. Externally the property boasts a rear garden and a large shed currently being used as a utility area.

Located just a 4 minute walk from the Westcliffe Beach and Bournemouth town centre, the property is close to a range of amenities, including shops, supermarkets, restaurants, pubs. Excellent transport connections can be found from Bournemouth Train Station, a variety of local bus routes, and quick access to the A338.

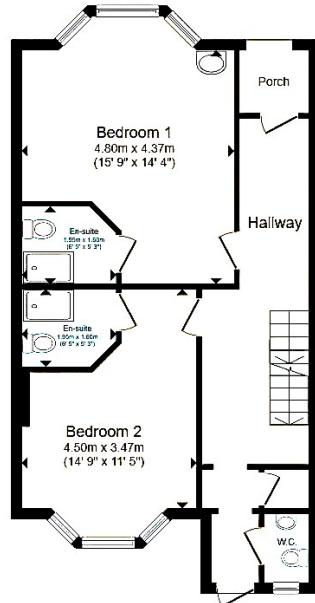
This exciting investment opportunity should not be missed. All enquiries can be made through Bettermove.

---

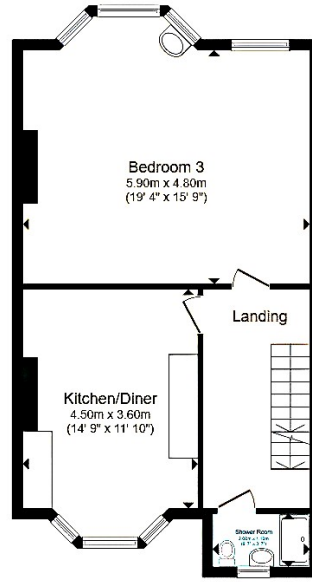




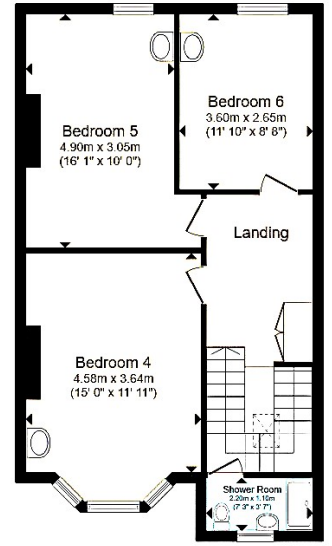
Lower Ground Floor



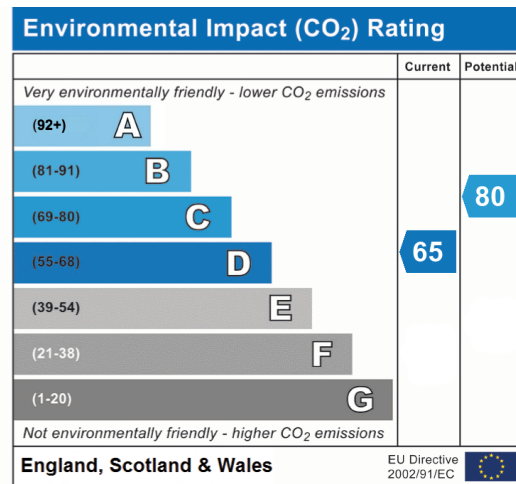
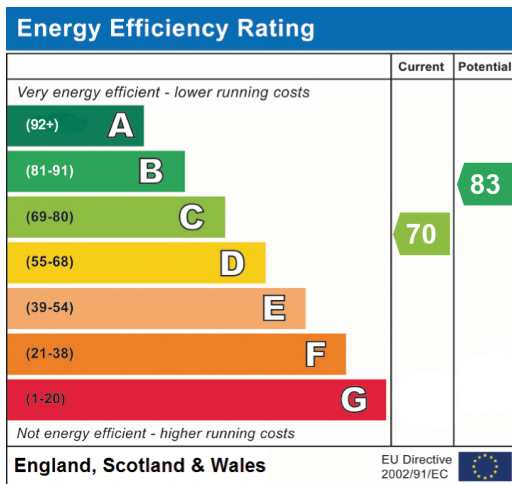
Ground Floor



First Floor



Second Floor





20-22 Bridge End, Leeds, LS1 4DJ  
t: 0330 004 0050 e: hello@bettermove.co.uk  
[www.bettermove.co.uk](http://www.bettermove.co.uk)