



Flat 16 Mill Bank Court
Mill Street
Kidderminster
Worcestershire
DY11 6GA

£120,000

bettermove

Mill Street Kidderminster

Bettermove are proud to present this 2 bedroom flat in Kidderminster, available with no forward chain.

The property benefits from double glazing, and gas central heating throughout, with allocated parking available.

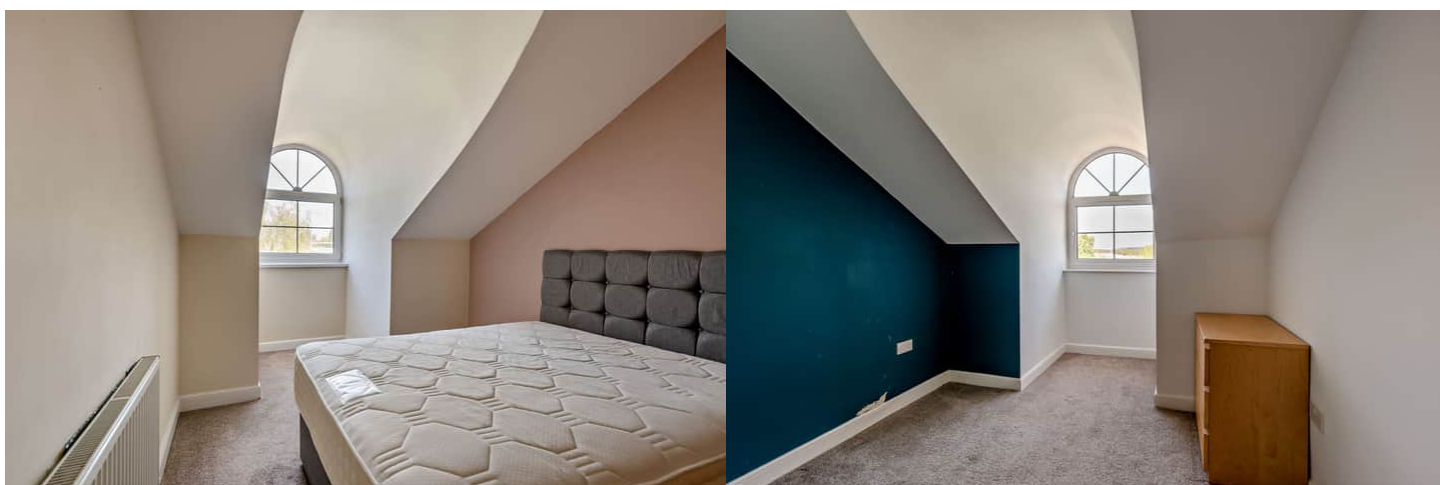
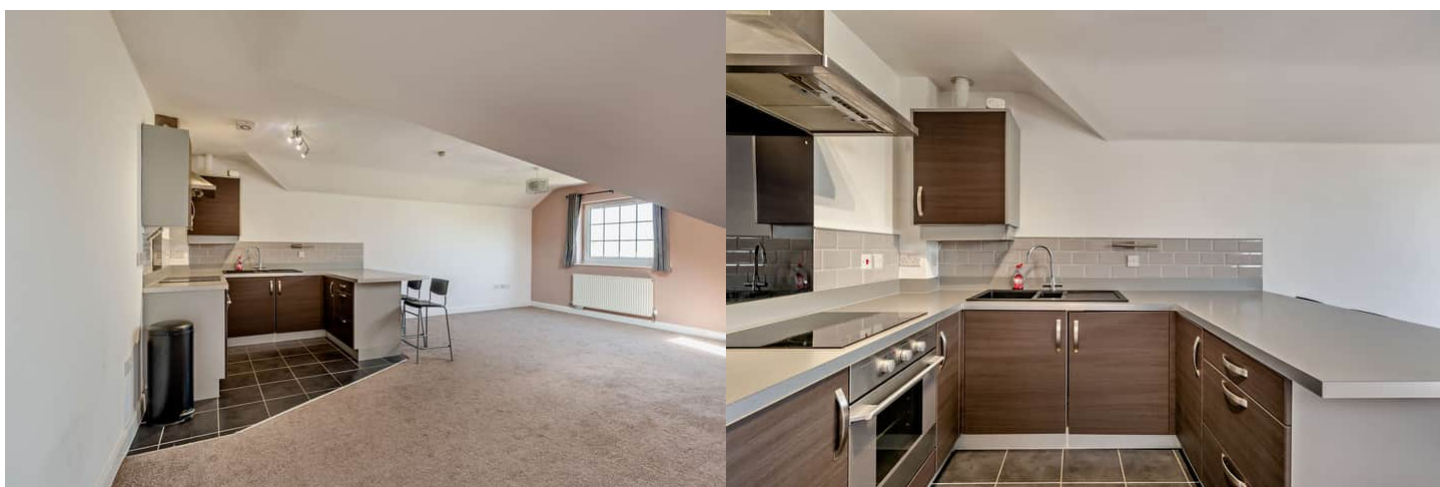
The council tax band is A.

This is a leasehold property with 108 years remaining on the lease.

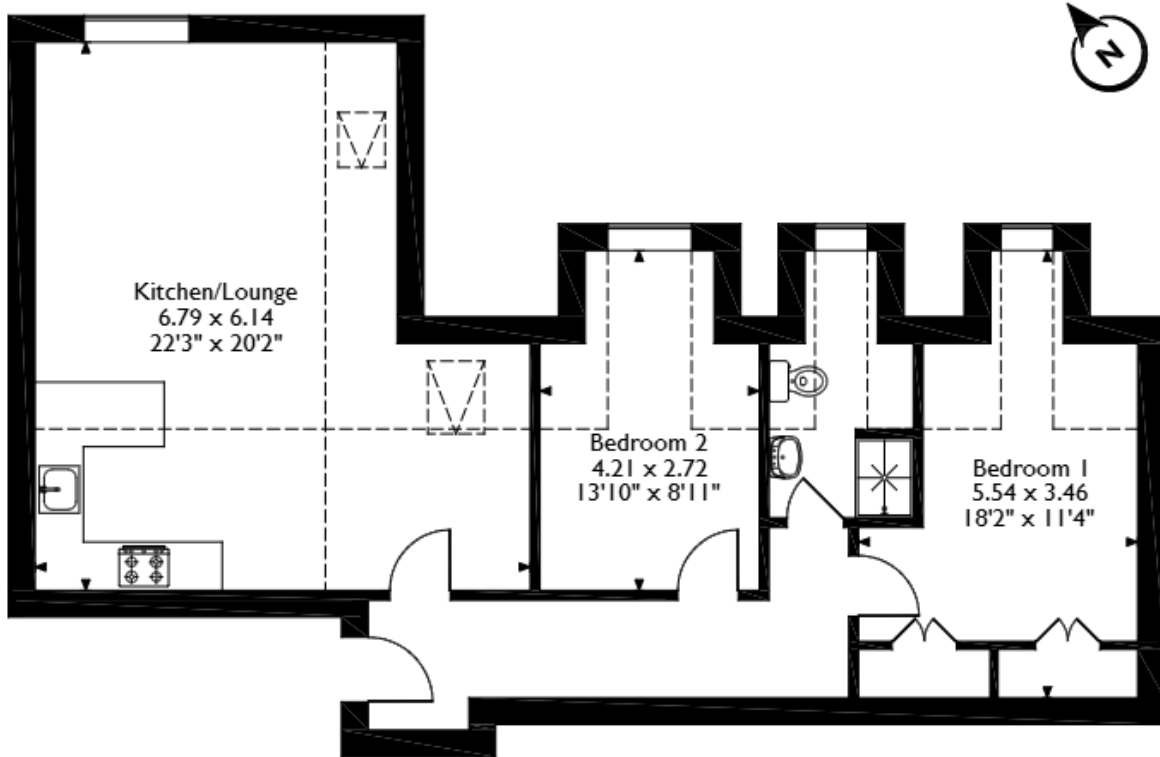
The interior of this beautifully presented property comprises a spacious, open plan living/dining area, fitted kitchen, two double bedrooms, alongside the family bathroom.

Located in the popular town of Kidderminster, the property is close to a range of amenities, including shops, supermarkets, restaurants and pubs. Excellent transport connections can be found from Kidderminster train station (1.3 miles), a variety of local bus routes and quick access to the A442 and M5.

This exciting opportunity should not be missed. All enquiries can be made through Bettermove.



Mill Bank Court, Mill Street, Kidderminster, Worcestershire
 Approximate Gross Internal Area
 38 Sq M/409 Sq Ft



Please note that the location of doors, windows and other items are approximate and this floorplan is to be used for illustrative purposes only. Unauthorized reproduction is prohibited.

Energy Efficiency Rating		
	Current	Potential
<i>Very energy efficient - lower running costs</i>		
(92+) A		
(81-91) B		
(69-80) C	81	81
(55-68) D		
(39-54) E		
(21-38) F		
(1-20) G		
<i>Not energy efficient - higher running costs</i>		
England, Scotland & Wales	EU Directive 2002/91/EC	

Environmental Impact (CO ₂) Rating		
	Current	Potential
<i>Very environmentally friendly - lower CO₂ emissions</i>		
(92+) A		
(81-91) B		
(69-80) C	83	83
(55-68) D		
(39-54) E		
(21-38) F		
(1-20) G		
<i>Not environmentally friendly - higher CO₂ emissions</i>		
England, Scotland & Wales	EU Directive 2002/91/EC	



20-22 Bridge End, Leeds, LS1 4DJ
t: 0330 004 0050 e: hello@bettermove.co.uk
www.bettermove.co.uk