



**Whinchat Road
London
SE28**

Offers in Excess of £430,000

bettermove

Whinchat Road London

Bettermove are proud to present this 4 bedroom terraced house in London, available with no forward chain.

The property benefits from double glazing, and gas central heating throughout, with off street parking available.

The council tax band is C.

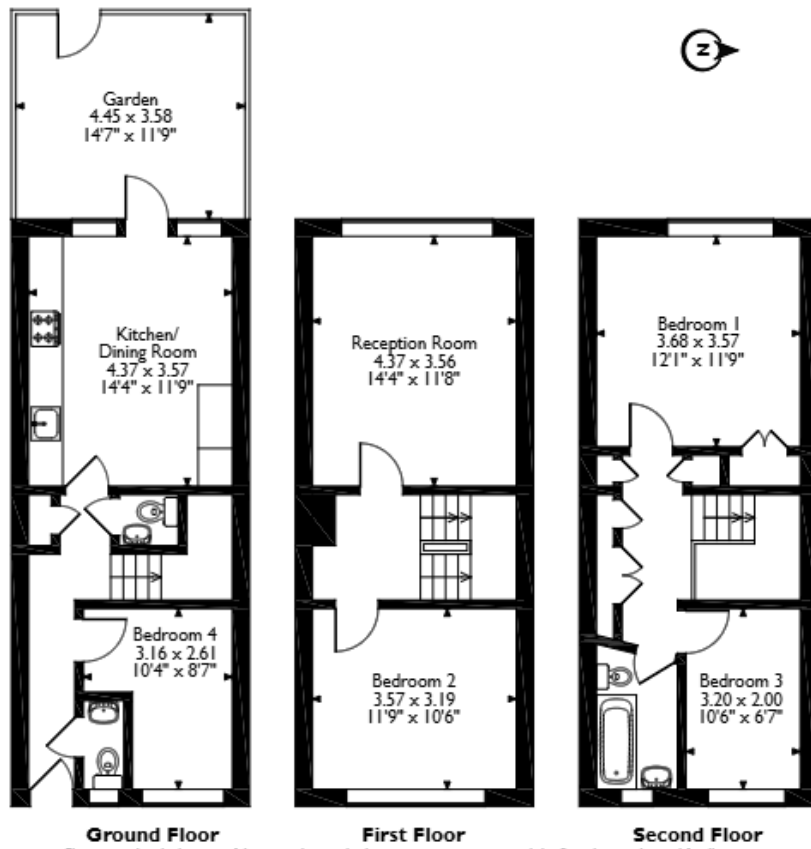
The interior of this well presented property comprises a fitted kitchen/dining room, two WCs and bedroom four on the ground floor. The first floor consists of a spacious reception room, and a double bedroom, the further two bedrooms, alongside the family bathroom are located on the second floor. The exterior boasts a private rear garden, perfect for enjoying the summer months.

Located in the Royal Borough of Greenwich, the property is close to a range of amenities, including shops, supermarkets, restaurants and pubs. Excellent transport connections can be found from Plumstead Train Station, a variety of local bus and underground routes, and quick access to the A2.

This exciting opportunity should not be missed. All enquiries can be made through Bettermove.



Whinchat Road, London
Approximate Gross Internal Area
105 Sq M/1131 Sq Ft



Please note that the location of doors, windows and other items are approximate and this floorplan is to be used for illustrative purposes only. Unauthorized reproduction is prohibited.



20-22 Bridge End, Leeds, LS1 4DJ
t: 0330 004 0050 e: hello@bettermove.co.uk
www.bettermove.co.uk