



**Holmefield  
Sale  
Cheshire  
M33**

**Offers In Excess Of £190,000**

**bettermove**

# Holmefield Sale

Bettermove are proud to present this 1 bedroom flat in Sale, available with no forward chain.

The property is currently tenanted and it will be sold with tenants in situ for immediate investment. Rental yields can be obtained through Bettermove.

The property benefits from double glazing, and gas central heating throughout, with one allocated parking spot available.

The council tax band is B.

This is a leasehold property with 982 years remaining on the lease; the service charge is £91.00 per month.

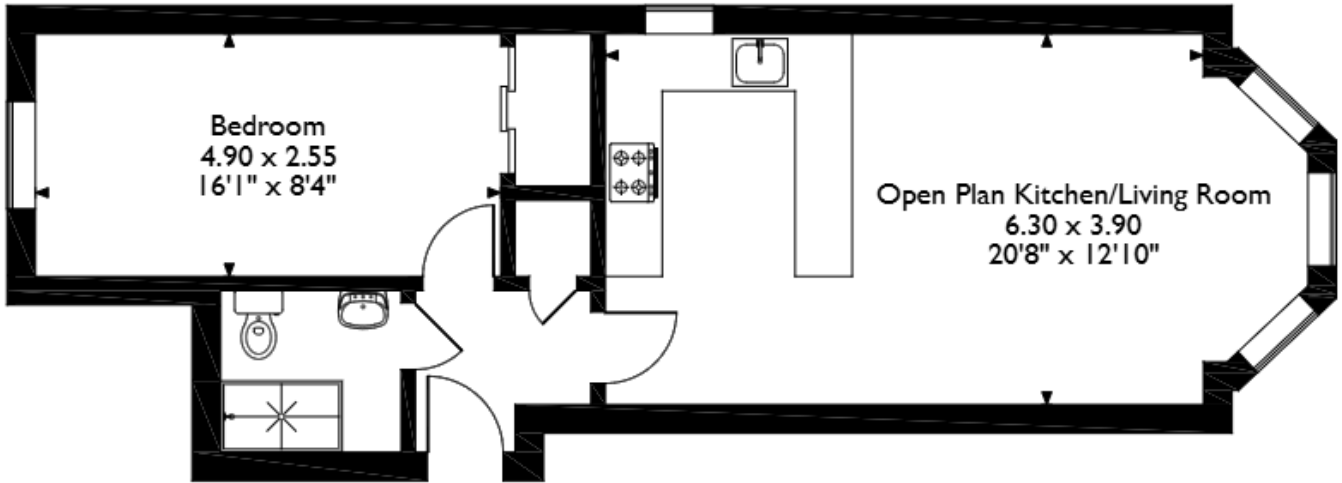
The interior of this beautifully presented property comprises a spacious, open-plan living/kitchen area, one double bedroom, and a family bathroom.

Located in the popular town of Sale, the property is close to a range of amenities, including shops, supermarkets, restaurants and pubs. Excellent transport connections can be found from Sale Tram Stop, giving direct links into Manchester City Centre, a variety of local bus routes, and quick access to the M60.

This exciting opportunity should not be missed. All enquiries can be made through Bettermove.



Holmefield, Sale  
Approximate Gross Internal Area  
50 Sq M/538 Sq Ft



Please note that the location of doors, windows and other items are approximate and this floorplan is to be used for illustrative purposes only. Unauthorized reproduction is prohibited.



20-22 Bridge End, Leeds, LS1 4DJ  
t: 0330 004 0050 e: hello@bettermove.co.uk  
[www.bettermove.co.uk](http://www.bettermove.co.uk)