



**58 Ouzel Grove  
Eastfield  
Scarborough  
North Yorkshire  
YO11 3HX**

**Offers In Excess Of £300,000**

**bettermove**

# Ouzel Grove Scarborough

Bettermove are proud to present this 4 bedroom detached house in Eastfield.

The property benefits from double glazing, underfloor heating and gas central heating throughout, with off street parking available via the driveway and double garage.

The council tax band is E.

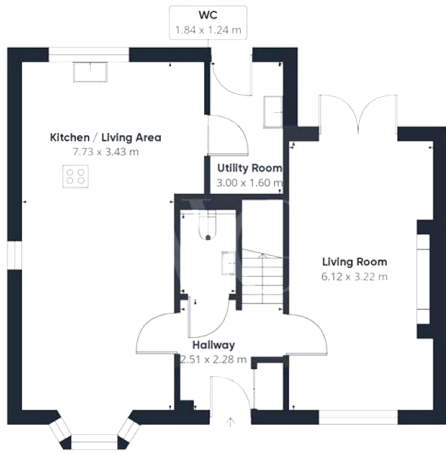
The interior of this beautifully presented property comprises a spacious living room, dining room, utility room and fitted kitchen, and WC on the ground floor. The first floor consists of the four bedrooms and two family bathrooms. The exterior boasts a private rear garden, perfect for enjoying the summer months.

Located in the popular town of Eastfield, the property is close to a range of amenities, including shops, supermarkets, restaurants and pubs. Excellent transport connections can be found from Seamer train station (2.6 miles), a variety of local bus routes and quick access to the A165.

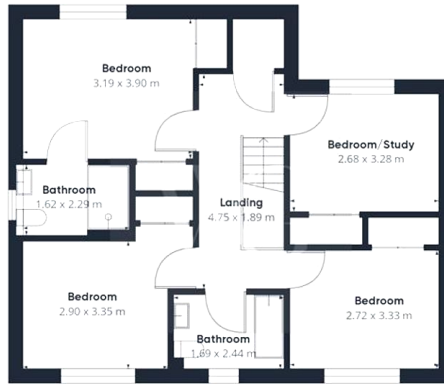
This exciting opportunity should not be missed. All enquiries can be made through Bettermove.

---



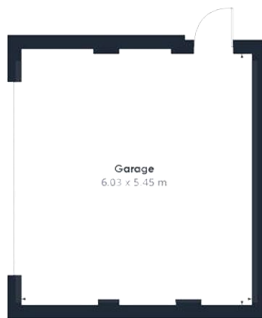


Floor 1 Building 1



Floor 2 Building 1

Approximate total area<sup>(1)</sup>  
159.97 m<sup>2</sup>



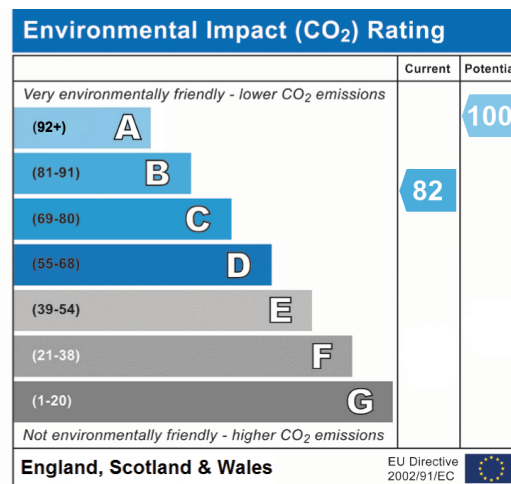
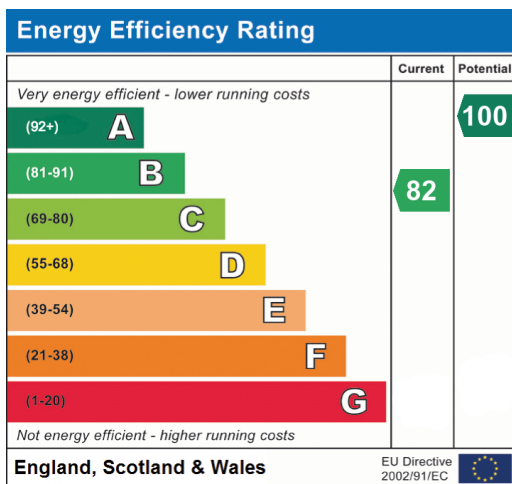
Floor 1 Building 2

(1) Excluding balconies and terraces

While every attempt has been made to ensure accuracy, all measurements are approximate, not to scale. This floor plan is for illustrative purposes only.

Calculations are based on RICS IPMS 3C standard.

GIRAFFE360





20-22 Bridge End, Leeds, LS1 4DJ  
t: 0330 004 0050 e: hello@bettermove.co.uk  
[www.bettermove.co.uk](http://www.bettermove.co.uk)