



**Haydn Terrace  
Merthyr Tydfil  
Mid Glamorgan  
CF47**

**Offers In Excess Of £139,000**

**bettermove**

# Haydn Terrace

## Merthyr Tydfil

Bettermove are proud to present this 3 bedroom terrace house in Merthyr Tydfil, available with no forward chain.

This property benefits from double glazing, and gas central heating throughout, with on street parking available.

The council tax band is B.

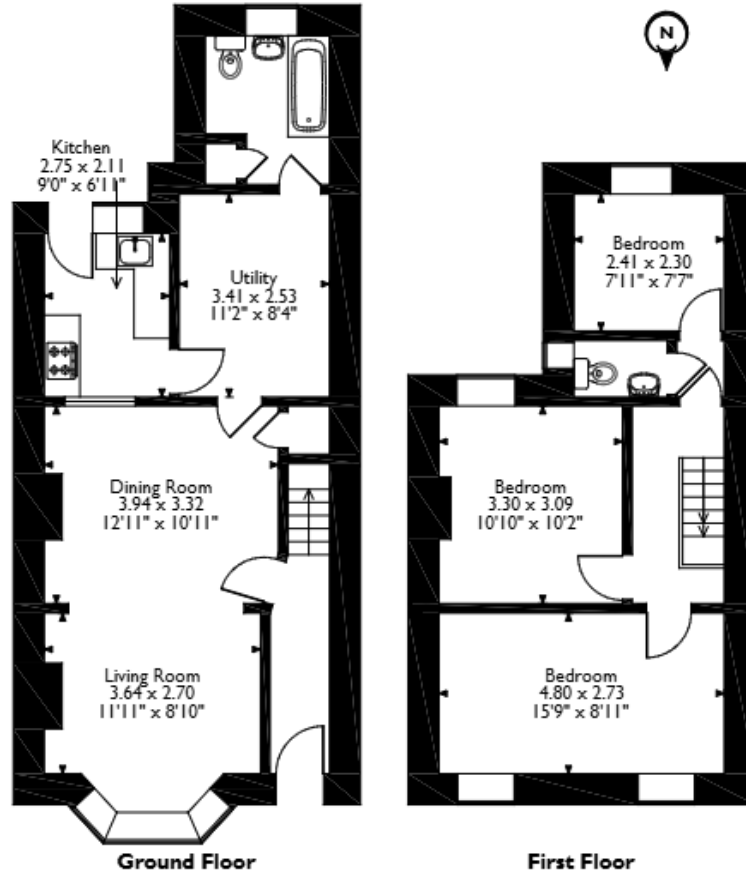
The interior of this property, which may require some modernisation, comprises a spacious living room, dining room, fitted kitchen, with attached utility room, and a family bathroom on the ground floor. The first floor consists of three bedrooms, including two doubles, and one single, alongside a separate WC. The exterior boasts a private rear garden, mainly laid with paving, perfect for enjoying the summer months.

Located in the popular town of Merthyr Tydfil, the property is close to a range of amenities, including shops, supermarkets, restaurants, pubs, and schools. Excellent transport links can be found from Merthyr Tydfil Train Station, a variety of local bus routes, and quick access to the A470, leading to the M4.

This exciting opportunity should not be missed! All enquiries can be made through Bettermove.



Haydn Terrace, Merthyr Tydfil  
Approximate Gross Internal Area  
91 Sq M/980 Sq Ft



Please note that the location of doors, windows and other items are approximate and this floorplan is to be used for illustrative purposes only. Unauthorized reproduction is prohibited.



20-22 Bridge End, Leeds, LS1 4DJ  
t: 0330 004 0050 e: hello@bettermove.co.uk  
[www.bettermove.co.uk](http://www.bettermove.co.uk)