



Spa Mill Terrace
Slaithwaite
Huddersfield
West Yorkshire
HD7

Offers In Excess Of £130,000

bettermove 

Spa Mill Terrace Huddersfield

Bettermove are proud to present this 2 bedroom terraced house in Slaithwaite.

The property benefits from double glazing, and gas central heating throughout, with off street parking available via permit parking.

The council tax band is A.

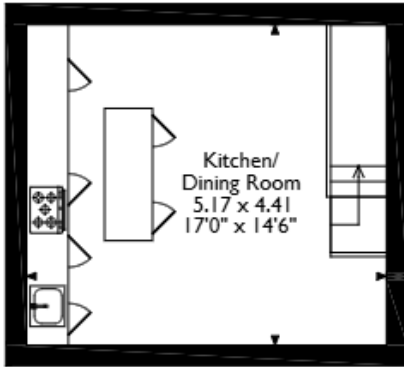
The interior of this well presented property comprises a spacious dining area and fitted kitchen in the cellar. The first floor consists of the living room and the second floor consists of the 2 bedrooms and family bathroom.

Located in the popular town of Slaithwaite, the property is close to a range of amenities, including shops, supermarkets, restaurants and pubs. Excellent transport connections can be found from Slaithwaite train station (0.4 miles), a variety of bus routes and the M62.

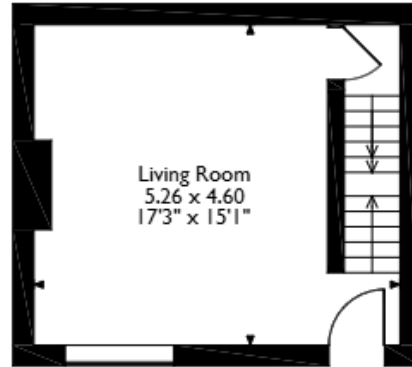
This exciting opportunity should not be missed. All enquiries can be made through Bettermove.



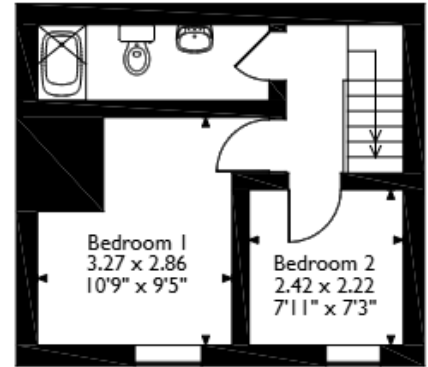
Spa Mill Terrace, Slaithwaite, Huddersfield
Approximate Gross Internal Area
72 Sq M/774 Sq Ft



Cellar



Ground Floor



First Floor

Please note that the location of doors, windows and other items are approximate and this floorplan is to be used for illustrative purposes only. Unauthorized reproduction is prohibited.



20-22 Bridge End, Leeds, LS1 4DJ
t: 0330 004 0050 e: hello@bettermove.co.uk
www.bettermove.co.uk