



**Greens Valley Drive  
Stockton-on-Tees  
Durham  
TS18**

**Offers in Excess of £528,000**

**bettermove**

# Greens Valley Drive

## Stockton-on-Tees

Bettermove are proud to present this 5 bedroom detached house in Stockton-on-Tees, available with no forward chain.

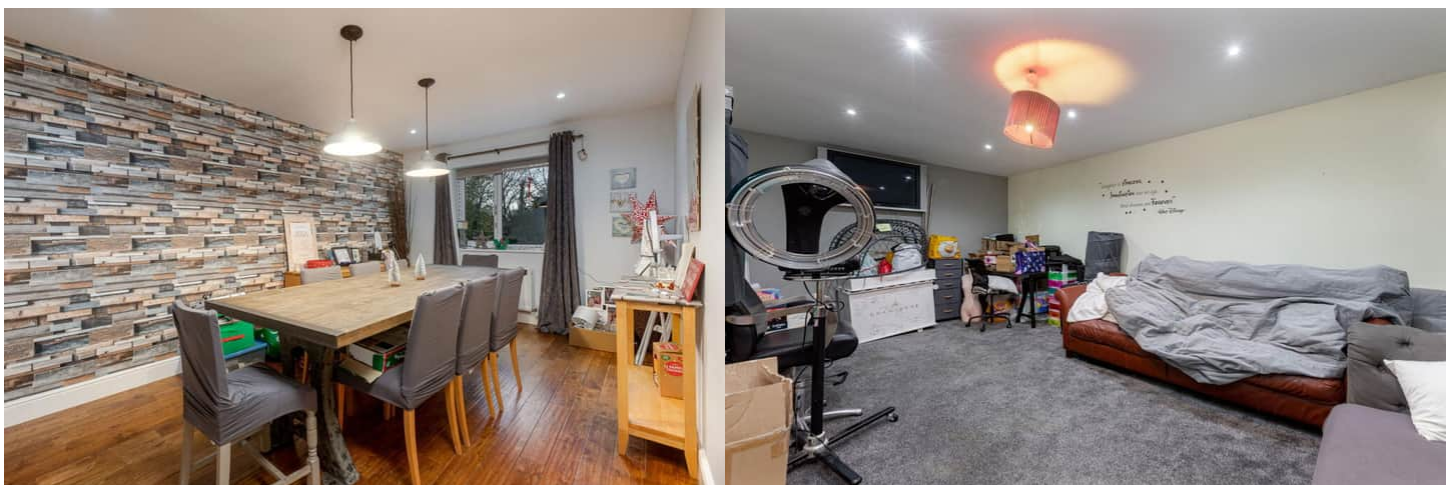
The property benefits from double glazing, and gas central heating throughout, with off street parking available via the driveway and garage.

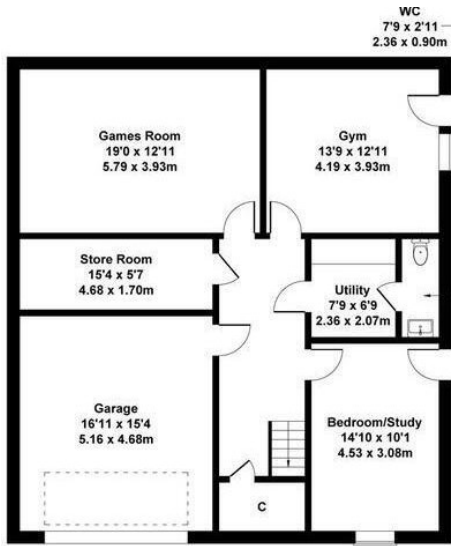
The council tax band is G.

The interior of this beautifully presented property is situated across three floors, boasting over 3,600 sq ft. The lower ground floor houses two reception rooms, currently used as a games room and gym, utility room, WC, and the fifth bedroom/study, with access to the garage. Upstairs, the ground floor comprises a spacious living room, dining room, large kitchen/diner, with attached utility, and WC. The first floor consists of four bedrooms, with the master bedroom benefitting from a private en-suite, alongside the family bathroom. The exterior boasts a tiered rear garden, with lawn, patio, and decking areas, perfect for enjoying the summer months.

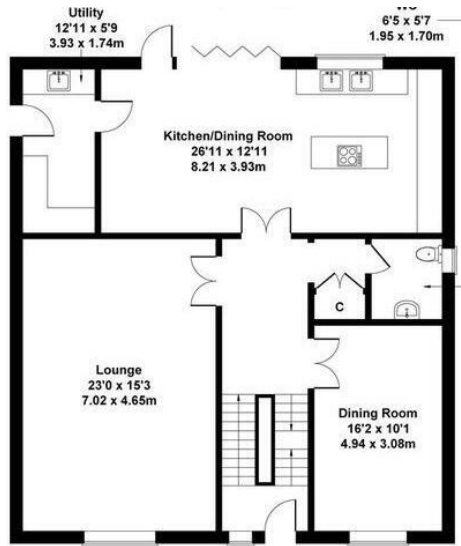
Located in the popular town of Stockton-on-Tees, the property is close to a range of amenities, including shops, supermarkets, restaurants, pubs, and schools. Excellent transport connections can be found from Stockton Train Station, a variety of local bus routes, and quick access to the A66.

This exciting opportunity should not be missed. All enquiries can be made through Bettermove.

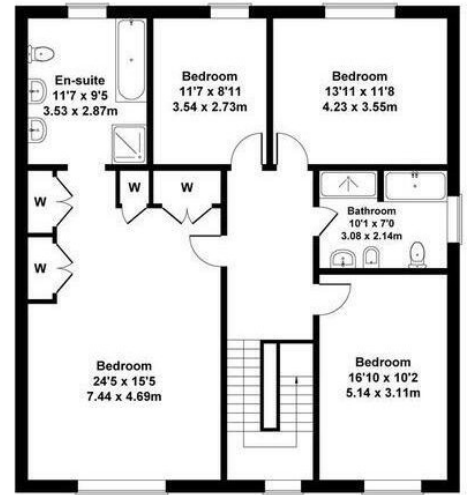




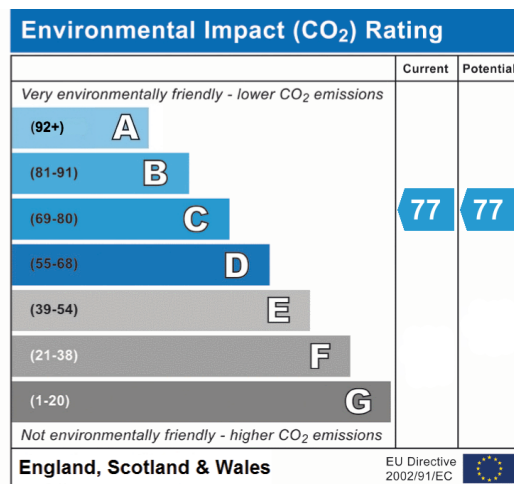
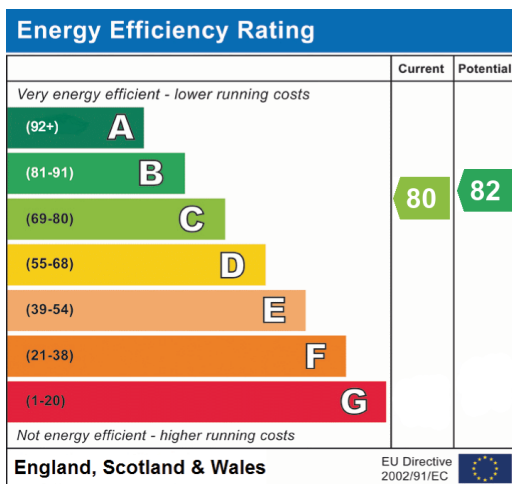
LOWER GROUND FLOOR



GROUND FLOOR



FIRST FLOOR





20-22 Bridge End, Leeds, LS1 4DJ  
t: 0330 004 0050 e: hello@bettermove.co.uk  
[www.bettermove.co.uk](http://www.bettermove.co.uk)