



**Valley View**  
**St Keyne**  
**Liskeard**  
**Cornwall**  
**PL14**

**Offers In Excess Of £285,000**

**bettermove**

# Valley View

## Liskeard

Bettermove are proud to present this 3 bedroom detached bungalow in St Keyne. Available with no forward chain.

The property is currently tenanted and it will be sold with tenants in situ for immediate investment. Rental yields can be obtained through Bettermove.

The property benefits from double glazing, and gas central heating throughout, with off street parking available via the driveway.

The council tax band is D.

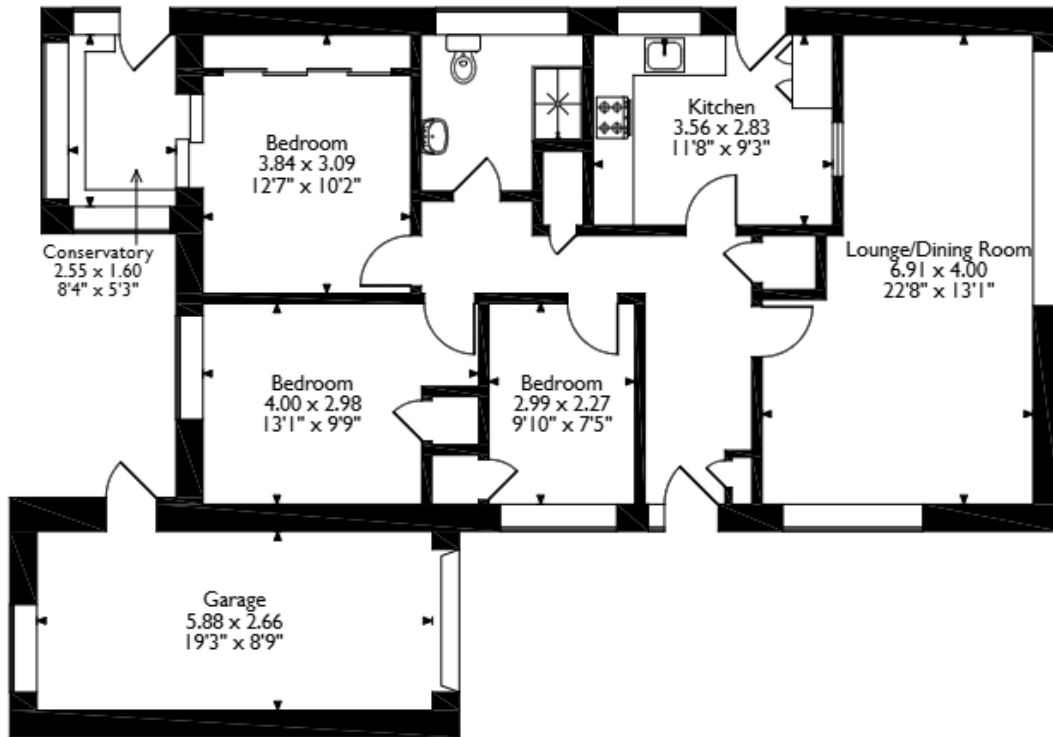
The interior of this beautifully presented property comprises a spacious living and dining area, conservatory and fitted kitchen, as well as the 3 bedrooms and the family bathroom. The exterior boasts a private rear garden, perfect for enjoying the summer months.

Located in the popular town of St Keyne, the property is close to a range of amenities, including shops, supermarkets, restaurants and pubs. Excellent transport connections can be found from St Keyne Wishing Well Halt train station (0.9 miles), variety of bus routes and the A38.

This exciting opportunity should not be missed. All enquiries can be made through Bettermove.



Valley View, St. Keyne, Liskeard  
Approximate Gross Internal Area  
Main House = 91 Sq M/980 Sq Ft  
Garage = 16 Sq M/172 Sq Ft  
Total = 107 Sq M/1152 Sq Ft



Please note that the location of doors, windows and other items are approximate and this floorplan is to be used for illustrative purposes only. Unauthorized reproduction is prohibited.



20-22 Bridge End, Leeds, LS1 4DJ  
t: 0330 004 0050 e: hello@bettermove.co.uk  
[www.bettermove.co.uk](http://www.bettermove.co.uk)