



**Severn Gorge Park
Telford
Shropshire
TF7**

Offers In Excess Of £155,000

bettermove

Severn Gorge Park Telford

Bettermove are proud to present this 3 bedroom park home in Telford.

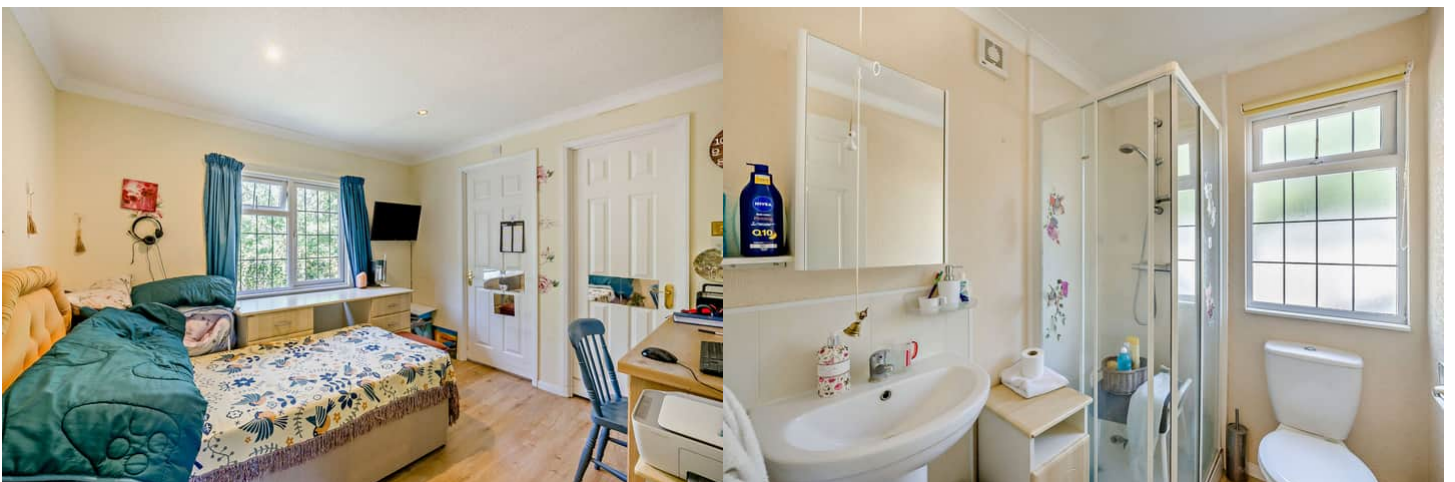
The property benefits from double glazing, and gas central heating throughout, with off street parking available via the driveway, and garage.

The council tax band is A.

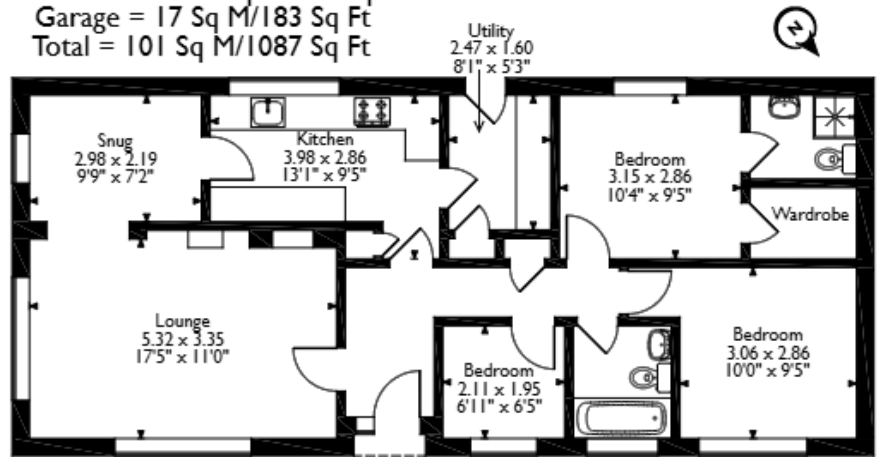
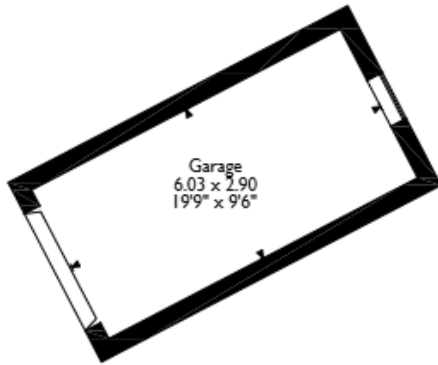
The interior of this beautifully presented property comprises a spacious living room, snug, fitted kitchen, with attached utility room, three bedrooms, including a master bedroom with private en-suite, and walk-in wardrobe, alongside a family bathroom. Outside, the property boasts a private rear and side garden, with both patio and lawn areas, perfect for enjoying the summer months.

Located in the popular town of Telford, the property is close to a range of amenities, including shops, supermarkets, restaurants and pubs. Excellent transport connections can be found from Telford Central Station, a variety of local bus routes, and quick access to the M54.

This exciting opportunity should not be missed. All enquiries can be made through Bettermove.



Beckbury Drive, Severn Gorge Park, Telford
Approximate Gross Internal Area
Main House = 84 Sq M/904 Sq Ft
Garage = 17 Sq M/183 Sq Ft
Total = 101 Sq M/1087 Sq Ft



Please note that the location of doors, windows and other items are approximate and this floorplan is to be used for illustrative purposes only. Unauthorized reproduction is prohibited.



20-22 Bridge End, Leeds, LS1 4DJ
t: 0330 004 0050 e: hello@bettermove.co.uk
www.bettermove.co.uk