



Norwich Road  
Fakenham  
Norfolk  
NR21

Offers In Excess Of £220,000

bettermove

# Norwich Road Fakenham

Bettermove are proud to present this 3 bedroom end of terrace house in Fakenham.

The property benefits from double glazing, and gas central heating throughout, with off street parking available via the 2 allocated spaces.

The council tax band is A.

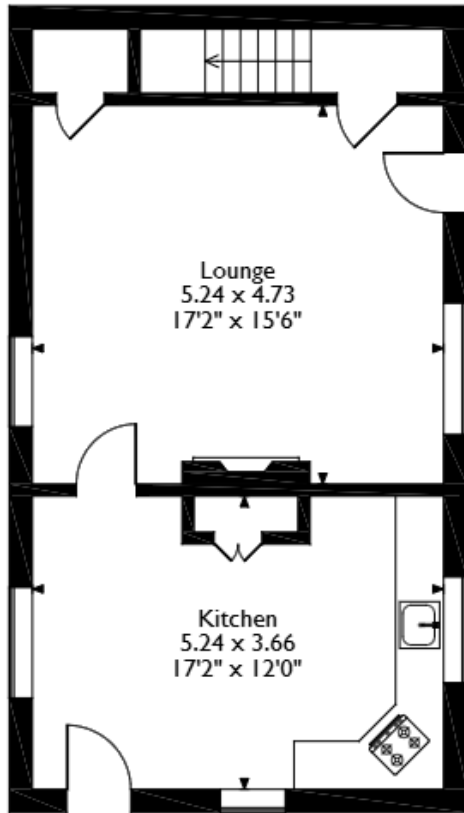
The interior of this beautifully presented property comprises a spacious living room and fitted kitchen and dining area on the ground floor. The first floor consists of 3 bedrooms and the family bathroom. The exterior boasts a public communal courtyard, perfect for enjoying the summer months.

Located in the popular town of Fakenham, the property is close to a range of amenities, including shops, supermarkets, restaurants and pubs. Excellent transport connections can be found from Dereham train station (12.9 miles), variety of bus routes and the A148.

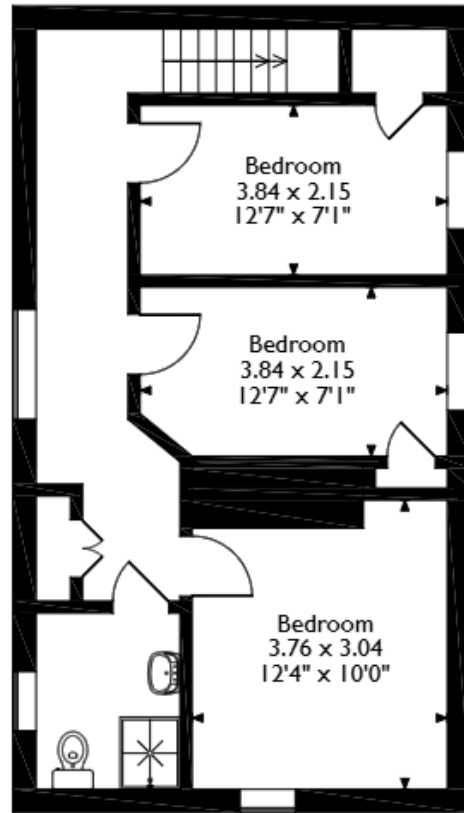
This exciting opportunity should not be missed. All enquiries can be made through Bettermove.



Norwich Road, Fakenham, Norfolk  
 Approximate Gross Internal Area  
 98 Sq M/1054 Sq Ft



**Ground Floor**



**First Floor**

Please note that the location of doors, windows and other items are approximate and this floorplan is to be used for illustrative purposes only. Unauthorized reproduction is prohibited.

Energy Efficiency Rating		
	Current	Potential
<i>Very energy efficient - lower running costs</i>		
(92+) <b>A</b>		
(81-91) <b>B</b>		<b>85</b>
(69-80) <b>C</b>		
(55-68) <b>D</b>	<b>58</b>	
(39-54) <b>E</b>		
(21-38) <b>F</b>		
(1-20) <b>G</b>		
<i>Not energy efficient - higher running costs</i>		
<b>England, Scotland &amp; Wales</b>	EU Directive 2002/91/EC	

Environmental Impact (CO <sub>2</sub> ) Rating		
	Current	Potential
<i>Very environmentally friendly - lower CO<sub>2</sub> emissions</i>		
(92+) <b>A</b>		
(81-91) <b>B</b>		<b>86</b>
(69-80) <b>C</b>		
(55-68) <b>D</b>		
(39-54) <b>E</b>	<b>55</b>	
(21-38) <b>F</b>		
(1-20) <b>G</b>		
<i>Not environmentally friendly - higher CO<sub>2</sub> emissions</i>		
<b>England, Scotland &amp; Wales</b>	EU Directive 2002/91/EC	



20-22 Bridge End, Leeds, LS1 4DJ  
t: 0330 004 0050 e: hello@bettermove.co.uk  
[www.bettermove.co.uk](http://www.bettermove.co.uk)