



**Chepstow Road  
Newport  
NP19**

**Offers in Excess of £210,000**

**bettermove**

# Chepstow Road Newport

Bettermove are proud to present this 3 bedroom semi-detached house in Newport, available with no forward chain.

The property benefits from double glazing, and gas central heating throughout, with an allocated parking space available.

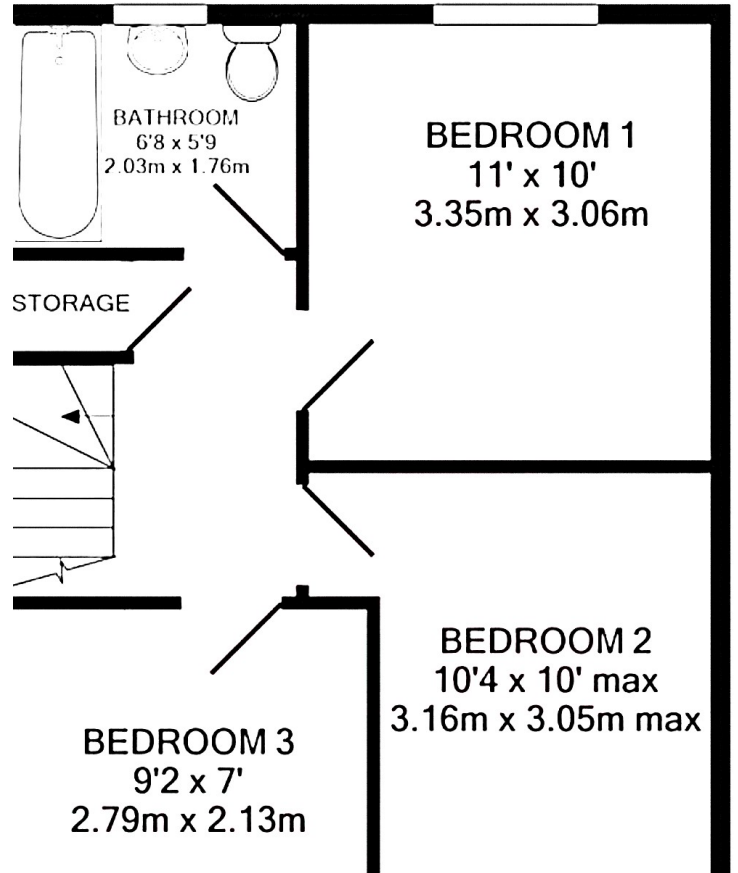
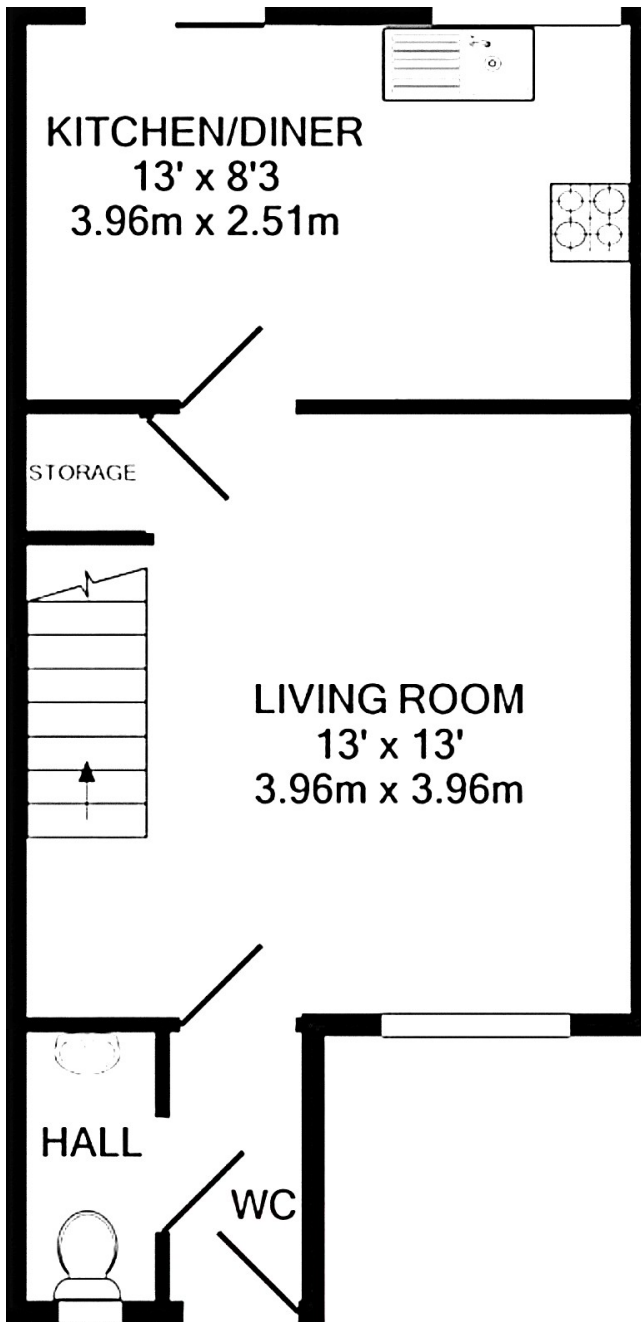
The council tax band is D.

The interior of this beautifully presented property comprises a spacious living room, fitted kitchen/diner, and WC on the ground floor. The first floor consists of three bedrooms, including two doubles, and one single, alongside the family bathroom. Outside, the property boasts a rear, decked courtyard, perfect for enjoying the summer months.

Located in the popular city of Newport, the property is close to a range of amenities, including shops, supermarkets, restaurants, pubs, and schools. Excellent transport connections can be found from Newport Train Station, a variety of local bus routes, and quick access to the M4.

This exciting opportunity should not be missed. All enquiries can be made through Bettermove.





Energy Efficiency Rating		
	Current	Potential
<i>Very energy efficient - lower running costs</i>		
(92+) <b>A</b>		<b>89</b>
(81-91) <b>B</b>		
(69-80) <b>C</b>		
(55-68) <b>D</b>		
(39-54) <b>E</b>		
(21-38) <b>F</b>		
(1-20) <b>G</b>		
<i>Not energy efficient - higher running costs</i>		
	<b>71</b>	
<b>England, Scotland &amp; Wales</b>		EU Directive 2002/91/EC

Environmental Impact (CO <sub>2</sub> ) Rating		
	Current	Potential
<i>Very environmentally friendly - lower CO<sub>2</sub> emissions</i>		
(92+) <b>A</b>		<b>89</b>
(81-91) <b>B</b>		
(69-80) <b>C</b>		
(55-68) <b>D</b>		
(39-54) <b>E</b>		
(21-38) <b>F</b>		
(1-20) <b>G</b>		
<i>Not environmentally friendly - higher CO<sub>2</sub> emissions</i>		
	<b>71</b>	
<b>England, Scotland &amp; Wales</b>		EU Directive 2002/91/EC



20-22 Bridge End, Leeds, LS1 4DJ  
t: 0330 004 0050 e: hello@bettermove.co.uk  
[www.bettermove.co.uk](http://www.bettermove.co.uk)