



**Richmond Court
Richmond Place
Dawlish
Devon
EX7**

Offers In Excess Of £125,000

bettermove

Richmond Place

Dawlish

Bettermove are proud to present this 2 bedroom flat in Dawlish, available with no forward chain.

The property benefits from double glazing, and electric heating throughout.

The council tax band is A.

This is a leasehold property with 68 years remaining on the lease; the ground rent is £170.00 per annum, and the service charge is £290.00 per month.

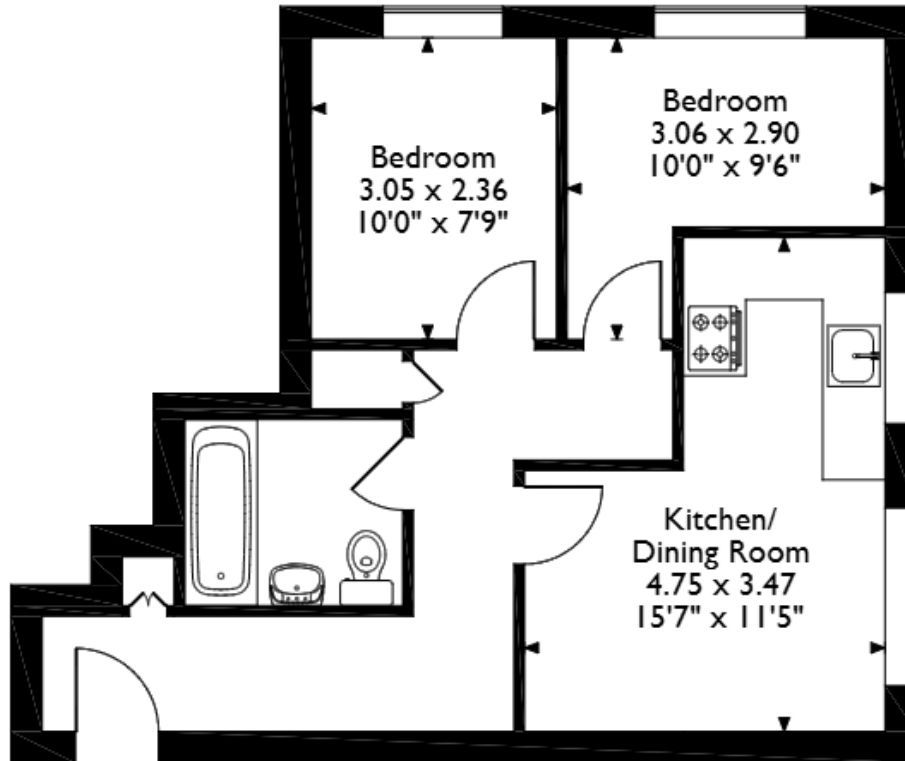
The interior of this third floor property comprises a spacious, open-plan living/kitchen area, two double bedrooms, and a family bathroom.

Located in the popular coastal town of Dawlish, the property is close to a range of amenities, including shops, supermarkets, restaurants, pubs, and a short distance to the seafront. Excellent transport connections can be found from Dawlish Train Station, a variety of local bus routes, and quick access to the A380, leading to the M5.

This exciting opportunity should not be missed. All enquiries can be made through Bettermove.



Richmond Court, Flat Richmond Place, Dawlish, Devon
Approximate Gross Internal Area
42 Sq M/452 Sq Ft



Third Floor

Please note that the location of doors, windows and other items are approximate and this floorplan is to be used for illustrative purposes only. Unauthorized reproduction is prohibited.



20-22 Bridge End, Leeds, LS1 4DJ
t: 0330 004 0050 e: hello@bettermove.co.uk
www.bettermove.co.uk