



**Hasell Park Place
Bromley
Kent
BR2**

**Offers In Excess Of
£1,400,000**

bettermove

Hasell Park Place Bromley

Bettermove are proud to present this 4 bedroom detached house in Bromley, available with no forward chain.

The property benefits from double glazing, and gas central heating throughout, with off street parking available via the driveway.

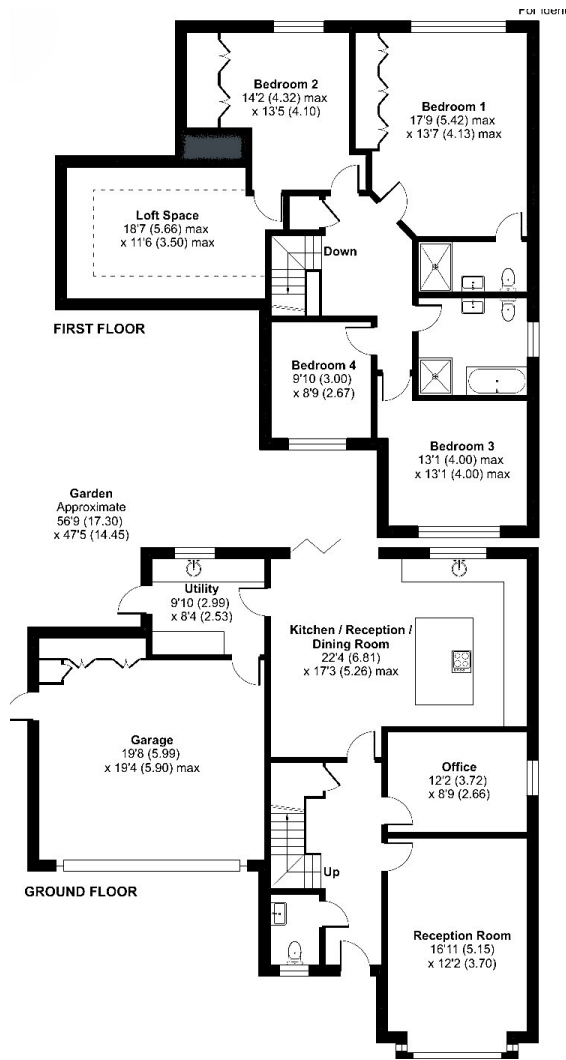
The council tax band is G.

The interior of this beautifully presented property comprises a spacious living room and an impressive open-plan kitchen and dining area, finished to a high specification with integrated appliances, alongside a separate utility room on the ground floor. The first floor consists of four well-proportioned bedrooms, including a principal suite with en-suite, in addition to a stylish family bathroom. Situated within a secure gated development, the exterior boasts a private rear garden, perfect for enjoying the summer months, featuring a generous patio area ideal for outdoor entertaining.

Located in the popular town of Bromley, the property is close to a range of amenities, including shops, supermarkets, restaurants and pubs. Excellent transport connections can be found from a variety of train and bus routes, as well as close access to the A21, leading into Bromley town, and the M25.

This exciting opportunity should not be missed. All enquiries can be made through Bettermove.





Energy Efficiency Rating		
	Current	Potential
<i>Very energy efficient - lower running costs</i>		
(92+) A		92
(81-91) B	85	
(69-80) C		
(55-68) D		
(39-54) E		
(21-38) F		
(1-20) G		
<i>Not energy efficient - higher running costs</i>		
England, Scotland & Wales	EU Directive 2002/91/EC	

Environmental Impact (CO ₂) Rating		
	Current	Potential
<i>Very environmentally friendly - lower CO₂ emissions</i>		
(92+) A		92
(81-91) B	85	
(69-80) C		
(55-68) D		
(39-54) E		
(21-38) F		
(1-20) G		
<i>Not environmentally friendly - higher CO₂ emissions</i>		
England, Scotland & Wales	EU Directive 2002/91/EC	



20-22 Bridge End, Leeds, LS1 4DJ
t: 0330 004 0050 e: hello@bettermove.co.uk
www.bettermove.co.uk