



Norwich Street
Dereham
Norfolk
NR19

Offers In Excess Of £365,000

bettermove 

Norwich Street Dereham

Bettermove are proud to present this mixed use property, including a commercial unit and a 3 bedroom flat in Dereham. Available with no forward chain.

The property benefits from double glazing, and gas central heating throughout, with off street parking available.

The council tax band is A.

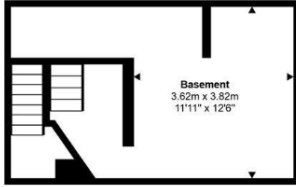
The interior of this well presented property comprises a shop, office, downstairs WC and access to the basement on the ground floor. The property comprises the living room, dining room, family bathroom and fitted kitchen on the first floor. The second floor consists of the 3 bedrooms and another family bathroom.

Located in the popular town of Dereham, the property is close to a range of amenities, including shops, supermarkets, restaurants and pubs. Excellent transport connections can be found from Dereham train station (0.2 miles), variety of bus routes and the A47.

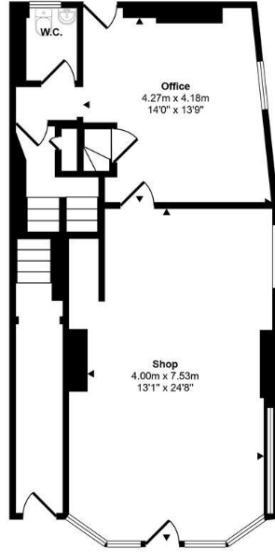
This exciting opportunity should not be missed. All enquiries can be made through Bettermove.



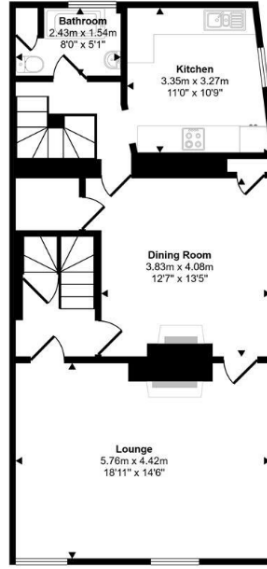
Approx Gross Internal Area
236 sq m / 2535 sq ft



Lower Ground Floor
Approx 29 sq m / 267 sq ft



Ground Floor
Approx 69 sq m / 739 sq ft



First Floor
Approx 72 sq m / 776 sq ft



Second Floor
Approx 70 sq m / 754 sq ft

This floorplan is only for illustrative purposes and is not to scale. Measurements of rooms, doors, windows, and any items are approximate and no responsibility is taken for any error, omission or mis-statement. Icons of items such as bathroom suites are representations only and may not look like the real items. Made with Made Snappy 360.



20-22 Bridge End, Leeds, LS1 4DJ
t: 0330 004 0050 e: hello@bettermove.co.uk
www.bettermove.co.uk