



**Denby Dale Road  
Wakefield  
West Yorkshire  
WF2 7AJ**

**Offers in Excess of £150,000**

**bettermove**

# Denby Dale Road Wakefield

Bettermove are proud to present this well-positioned 3 bedroom Semi-Detached house in Wakefield, available with no forward chain.

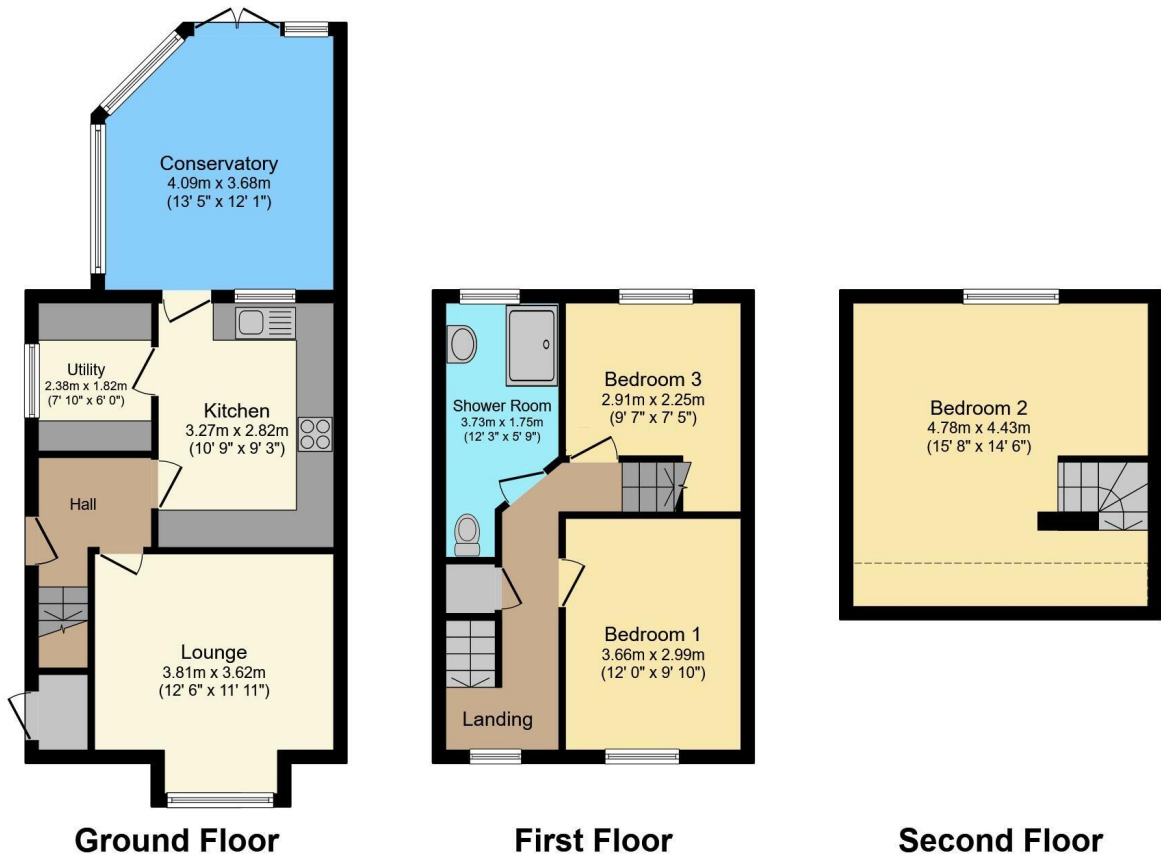
The property benefits from double glazing, gas central heating throughout and has off street parking available via the shared driveway leading to a detached garage. The council tax band is B.

The interior of this property comprises a spacious living room, the fitted kitchen, utility room and a large conservatory on the ground floor. The first floor consists of 2 bedrooms and the family bathroom. The third bedroom is located on the second floor. The exterior boasts a private rear garden, perfect for enjoying the summer months.

Located in the popular town of Wakefield, the property is close to a range of amenities, including shops, supermarkets, restaurants and pubs. Excellent transport connections can be found from the M1, Sandall & Agbrigg Train Station connecting to Wakefield Westgate Station and many local bus routes.

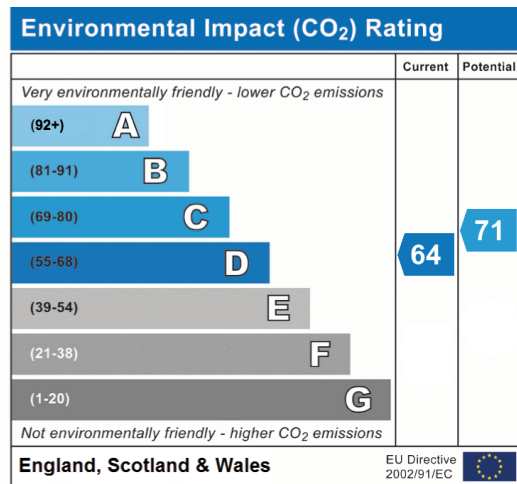
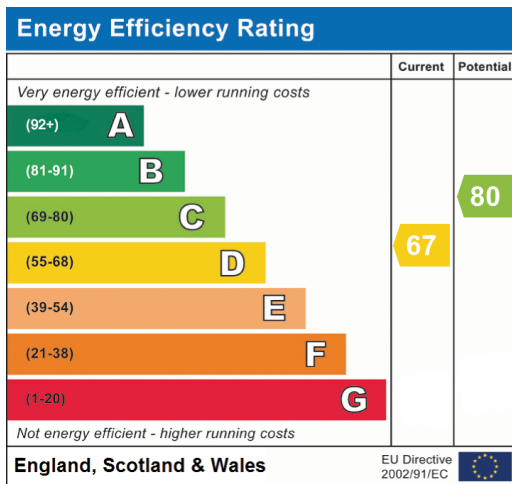
This exciting opportunity should not be missed! All enquiries can be made through Bettermove on 0330 004 0050.





Total floor area 107.3 sq.m. (1,155 sq.ft.) approx

This floor plan is for illustrative purposes only. It is not drawn to scale. Any measurements, floor areas (including any total floor area), openings and orientation are approximate. No details are guaranteed, they cannot be relied upon for any purpose and they do not form part of any agreement. No liability is taken for any error, omission or misstatement. A party must rely upon its own inspection(s). Plan produced for Purplebricks. Powered by www.focalagent.com





20-22 Bridge End, Leeds, LS1 4DJ  
t: 0330 004 0050 e: hello@bettermove.co.uk  
[www.bettermove.co.uk](http://www.bettermove.co.uk)