



Meneage Street
Helston
Cornwall
TR13

Offers in Excess of £185,000

bettermove

Meneage Street Helston

Bettermove are proud to present this Mixed Use property in Helston, including a commercial unit, and a 2 bedroom flat, available with no forward chain.

The council tax band of the flat is A.

The commercial unit has an EPC rating of C.

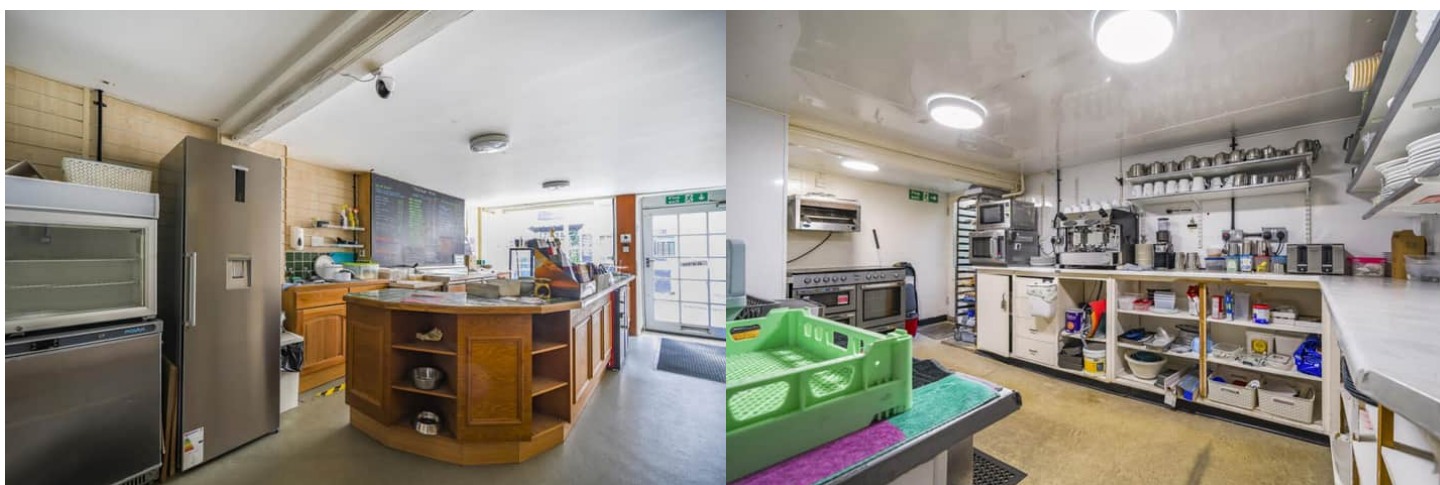
The interior of this property, which may require modernisation throughout, comprises a commercial unit on the ground floor, and a 2 bedroom flat on the remaining floors.

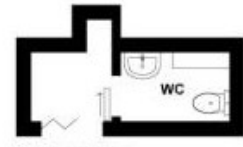
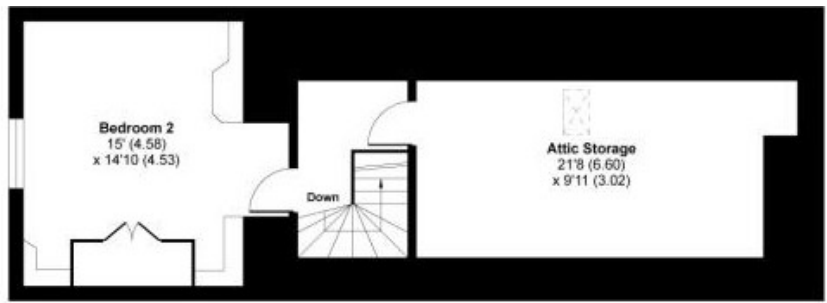
The commercial unit, currently trading as a café, consists of the café area, two further rooms, used as dining rooms, and a commercial kitchen.

The residential area of the building comprises a spacious living room, fitted kitchen/diner, WC, one double bedrooms, and a family bathroom on the first floor, with the second bedroom located on the second floor, alongside useful attic storage space. Externally, the property boasts an outside WC, and a private rear garden, perfect for enjoying the summer months.

Located in the popular town of Helston, the property is close to a range of amenities, including shops, supermarkets, restaurants and pubs. Excellent transport connections can be found from a variety of local bus routes, and quick access to the A394.

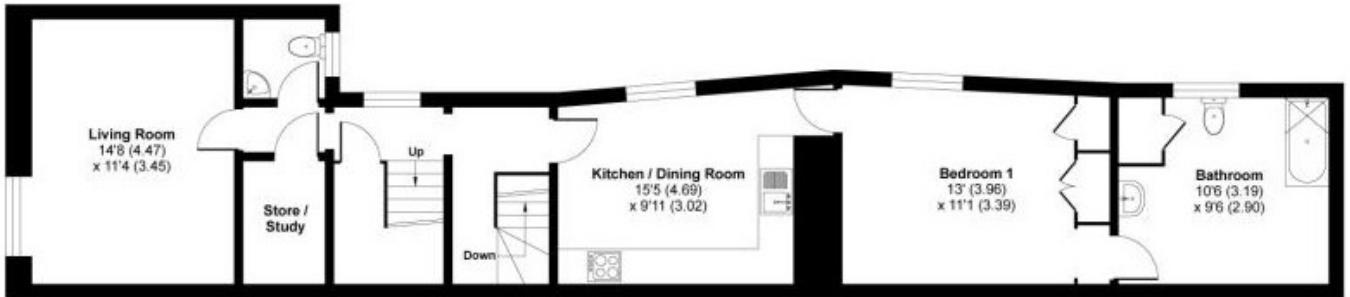
This exciting opportunity should not be missed. All enquiries can be made through Bettermove.



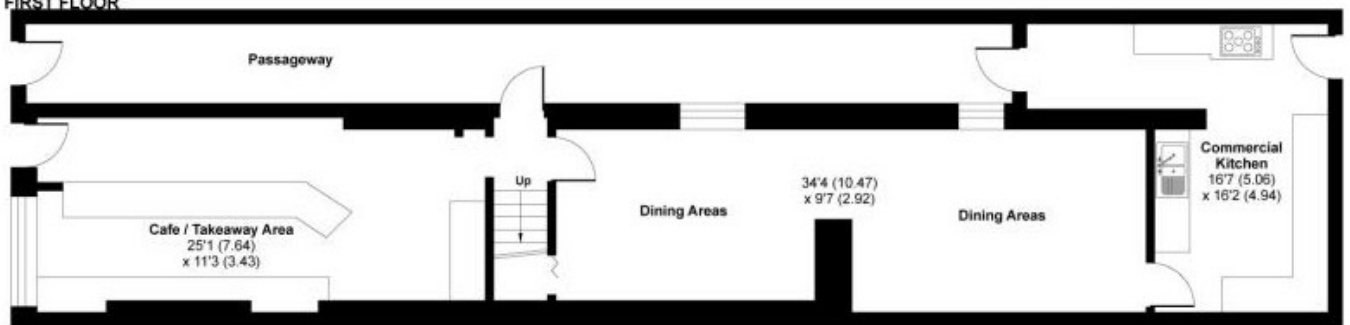


OUTBUILDING

SECOND FLOOR



FIRST FLOOR



GROUND FLOOR



20-22 Bridge End, Leeds, LS1 4DJ
t: 0330 004 0050 e: hello@bettermove.co.uk
www.bettermove.co.uk