



58 Ouzel Grove
Eastfield
Scarborough
North Yorkshire
YO11 3HX

Offers In Excess Of £325,000

bettermove 

Ouzel Grove

Scarborough

Bettermove are proud to present this 4 bedroom detached house in Eastfield.

The property benefits from double glazing, underfloor heating and gas central heating throughout, with off street parking available via the driveway and double garage.

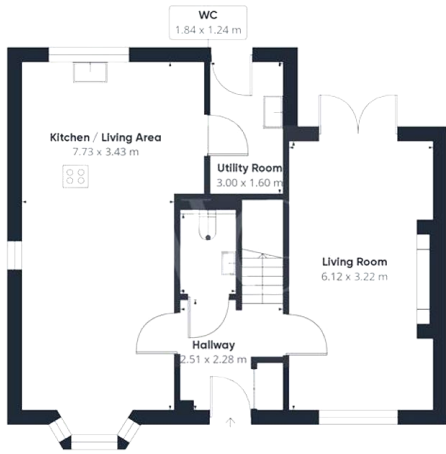
The council tax band is E.

The interior of this beautifully presented property comprises a spacious living room, dining room, utility room and fitted kitchen, and downstairs WC on the ground floor. The first floor consists of the 4 bedrooms and the 2 family bathroom. The exterior boasts a private rear garden, perfect for enjoying the summer months.

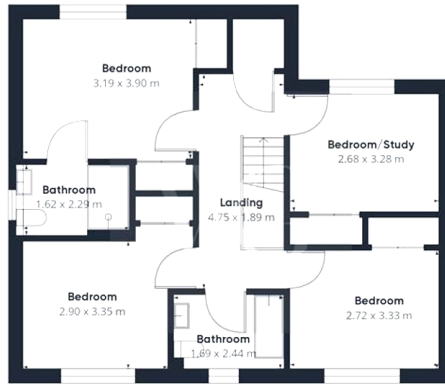
Located in the popular town of Eastfield, the property is close to a range of amenities, including shops, supermarkets, restaurants and pubs. Excellent transport connections can be found from Seamer train station (2.6 miles), variety of bus routes and the A165.

This exciting opportunity should not be missed. All enquiries can be made through Bettermove.



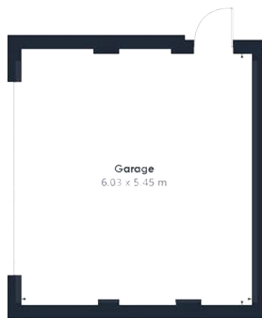


Floor 1 Building 1



Floor 2 Building 1

Approximate total area⁽¹⁾
159.97 m²



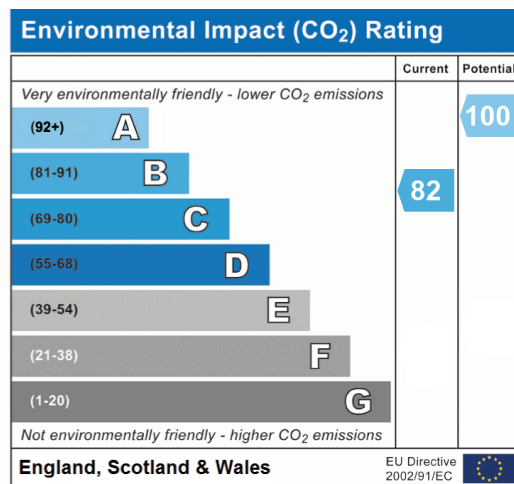
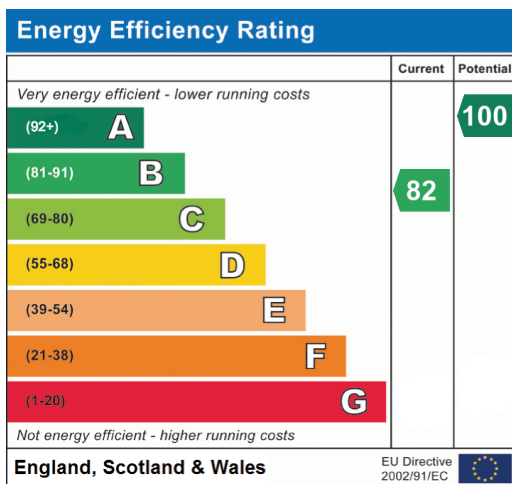
Floor 1 Building 2

(1) Excluding balconies and terraces

While every attempt has been made to ensure accuracy, all measurements are approximate, not to scale. This floor plan is for illustrative purposes only.

Calculations are based on RICS IPMS 3C standard.

GIRAFFE360





20-22 Bridge End, Leeds, LS1 4DJ
t: 0330 004 0050 e: hello@bettermove.co.uk
www.bettermove.co.uk