

**Tintern Road  
Birmingham  
West Midlands  
B20**

**Offers in Excess of £170,000**

**bettermove**

# Tintern Road

## Birmingham

Bettermove are proud to present this 3 bedroom terraced house in Birmingham, available with no forward chain.

The property is currently tenanted and it will be sold with tenants in situ for immediate investment. Rental yields can be obtained through Bettermove.

The property benefits from double glazing, and gas central heating throughout, with on street parking available.

The council tax band is A.

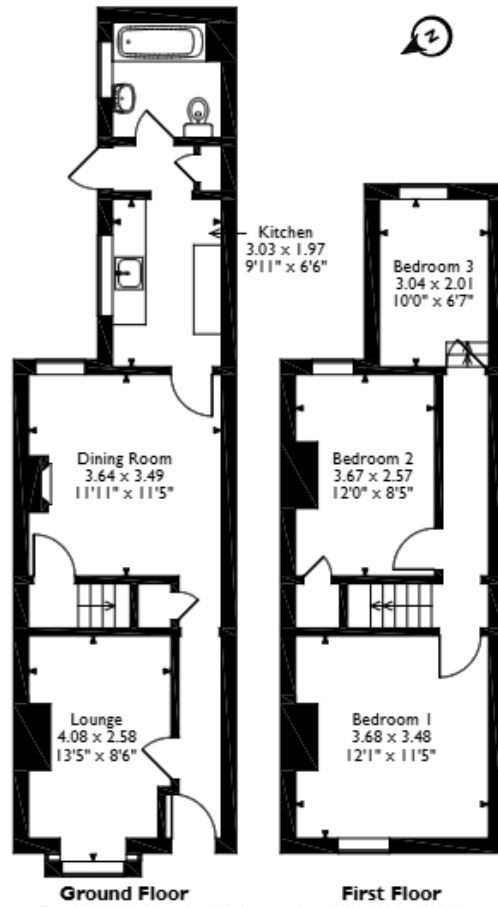
The interior of this well presented property comprises a spacious living room, dining room, fitted kitchen, and family bathroom on the ground floor. The first floor consists of three bedrooms, including two doubles, and one single. The exterior boasts a private rear garden, perfect for enjoying the summer months.

Located in the popular area of Handsworth, Birmingham, the property is close to a range of amenities, including shops, supermarkets, restaurants, pubs, and schools. Excellent transport connections can be found from Witton Train Station, a variety of local bus routes, and quick access to the M6.

This exciting opportunity should not be missed. All enquiries can be made through Bettermove.



Tintern Road, Birmingham  
 Approximate Gross Internal Area  
 77 Sq M/829 Sq Ft



Energy Efficiency Rating		
	Current	Potential
<i>Very energy efficient - lower running costs</i>		
(92+) <b>A</b>		
(81-91) <b>B</b>		
(69-80) <b>C</b>		73
(55-68) <b>D</b>	54	
(39-54) <b>E</b>		
(21-38) <b>F</b>		
(1-20) <b>G</b>		
<i>Not energy efficient - higher running costs</i>		
<b>England, Scotland &amp; Wales</b>	EU Directive 2002/91/EC	

Environmental Impact (CO <sub>2</sub> ) Rating		
	Current	Potential
<i>Very environmentally friendly - lower CO<sub>2</sub> emissions</i>		
(92+) <b>A</b>		
(81-91) <b>B</b>		
(69-80) <b>C</b>		69
(55-68) <b>D</b>		
(39-54) <b>E</b>	50	
(21-38) <b>F</b>		
(1-20) <b>G</b>		
<i>Not environmentally friendly - higher CO<sub>2</sub> emissions</i>		
<b>England, Scotland &amp; Wales</b>	EU Directive 2002/91/EC	



20-22 Bridge End, Leeds, LS1 4DJ  
t: 0330 004 0050 e: hello@bettermove.co.uk  
[www.bettermove.co.uk](http://www.bettermove.co.uk)