



Norwich Road  
Ipswich  
Suffolk  
IP1

Offers In Excess Of £415,000

bettermove 

# Norwich Road Ipswich

Bettermove are proud to present this 5 bedroom detached house in Ipswich.

The property benefits from double glazing, and gas central heating throughout, with off street parking available via the driveway and single garage.

The council tax band is D.

The interior of this well presented property comprises a spacious reception hall, living room, dining room, conservatory and fitted kitchen on the ground floor. The first floor consists of 4 bedrooms and the family bathroom, the fifth bedroom is located on the second floor. The exterior boasts a private rear garden, perfect for enjoying the summer months.

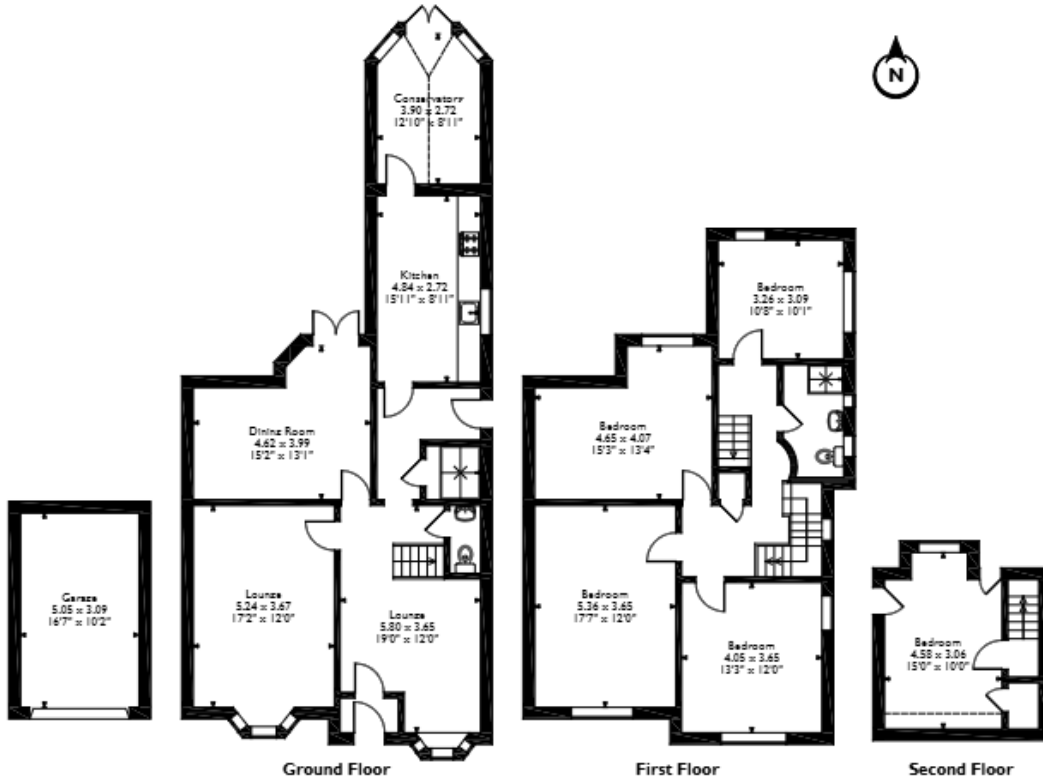
Located in the popular town of Ipswich, the property is close to a range of amenities, including shops, supermarkets, restaurants and pubs. Excellent transport connections can be found from Ipswich train station (1.6 miles), a variety of local bus routes and close access to the A14.

This exciting opportunity should not be missed. All enquiries can be made through Bettermove.

---



Norwich Road, Ipswich, Suffolk  
 Approximate Gross Internal Area  
 Main House = 189 Sq M/2035 Sq Ft  
 Garage = 16 Sq M/172 Sq Ft  
 Total = 205 Sq M/2207 Sq Ft



Please note that the location of doors, windows and other items are approximate and this floorplan is to be used for illustrative purposes only. Unauthorized reproduction is prohibited.

Energy Efficiency Rating		
	Current	Potential
<i>Very energy efficient - lower running costs</i>		
(92+) <b>A</b>		
(81-91) <b>B</b>		
(69-80) <b>C</b>		71
(55-68) <b>D</b>		
(39-54) <b>E</b>	40	
(21-38) <b>F</b>		
(1-20) <b>G</b>		
<i>Not energy efficient - higher running costs</i>		
<b>England, Scotland &amp; Wales</b>		
	EU Directive 2002/91/EC	

Environmental Impact (CO <sub>2</sub> ) Rating		
	Current	Potential
<i>Very environmentally friendly - lower CO<sub>2</sub> emissions</i>		
(92+) <b>A</b>		
(81-91) <b>B</b>		
(69-80) <b>C</b>		
(55-68) <b>D</b>		67
(39-54) <b>E</b>		
(21-38) <b>F</b>	37	
(1-20) <b>G</b>		
<i>Not environmentally friendly - higher CO<sub>2</sub> emissions</i>		
<b>England, Scotland &amp; Wales</b>		
	EU Directive 2002/91/EC	



20-22 Bridge End, Leeds, LS1 4DJ  
t: 0330 004 0050 e: hello@bettermove.co.uk  
[www.bettermove.co.uk](http://www.bettermove.co.uk)