



**Clayton Street West
Newcastle upon Tyne
Tyne and Wear
NE1**

Offers in Excess of £125,000

bettermove

Clayton Street West Newcastle upon Tyne

Bettermove are proud to present this 1 bedroom flat in Newcastle Upon Tyne.

The property benefits from double glazing, and community scheme heating, with off street parking available to rent.

The council tax band is A.

This is a leasehold property with 92 years remaining on the lease; the ground rent is £10.00 per annum, and the service charge is £289.64 per month.

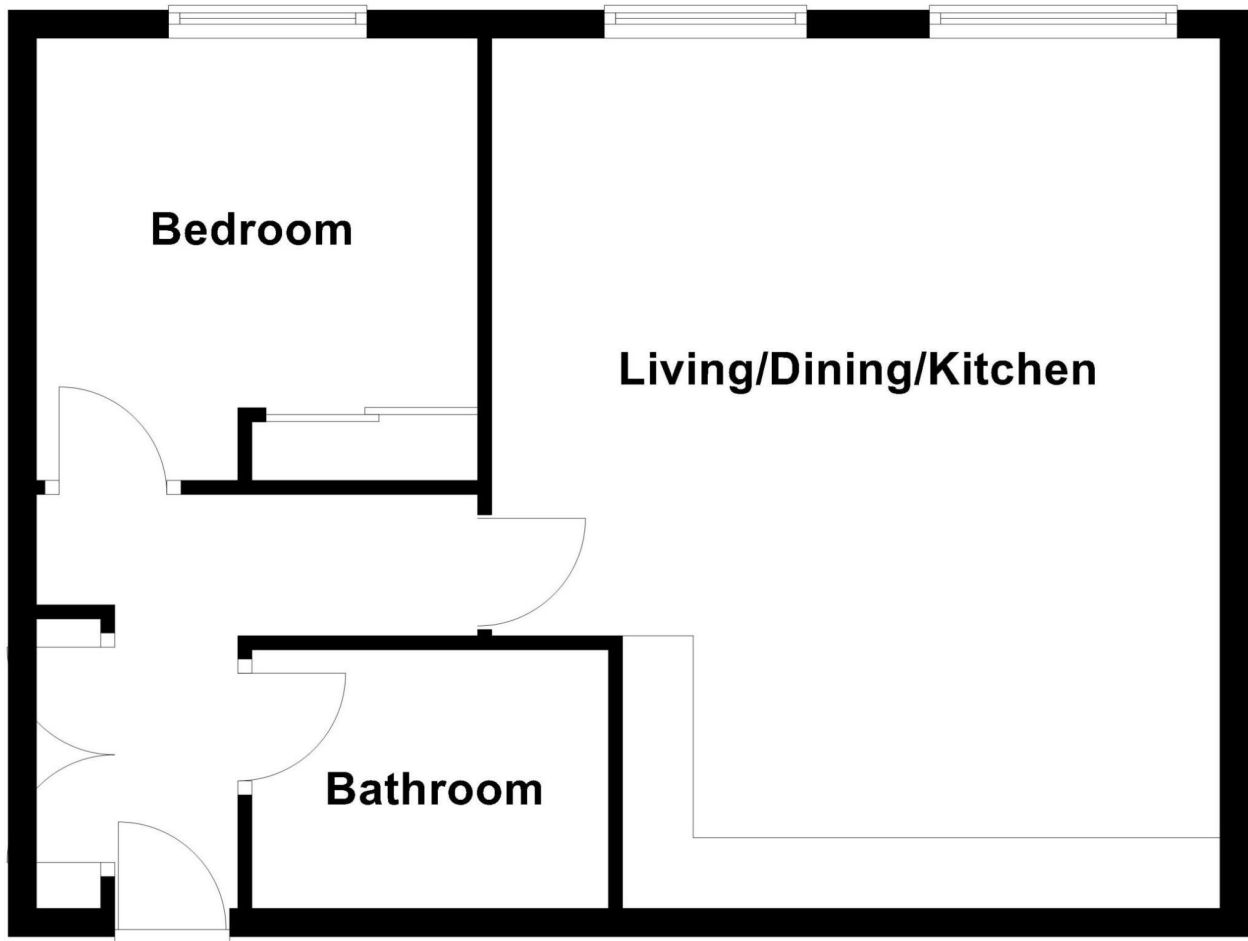
The interior of this beautifully presented, fourth floor property comprises a spacious living room, fitted kitchen, one double bedroom, and a family bathroom.

Located in the popular city of Newcastle Upon Tyne, the property is close to a range of amenities, including shops, supermarkets, restaurants and pubs. Excellent transport connections can be found from Newcastle Train Station, a variety of bus and tram links, with quick access to the A167(M).

This exciting opportunity should not be missed. All enquiries can be made through Bettermove.



Fourth Floor



Energy Efficiency Rating		
	Current	Potential
<i>Very energy efficient - lower running costs</i>		
(92+) A		
(81-91) B		
(69-80) C	71	73
(55-68) D		
(39-54) E		
(21-38) F		
(1-20) G		
<i>Not energy efficient - higher running costs</i>		
England, Scotland & Wales	EU Directive 2002/91/EC	

Environmental Impact (CO ₂) Rating		
	Current	Potential
<i>Very environmentally friendly - lower CO₂ emissions</i>		
(92+) A		
(81-91) B		
(69-80) C	76	80
(55-68) D		
(39-54) E		
(21-38) F		
(1-20) G		
<i>Not environmentally friendly - higher CO₂ emissions</i>		
England, Scotland & Wales	EU Directive 2002/91/EC	

20-22 Bridge End, Leeds, LS1 4DJ
t: 0330 004 0050 e: hello@bettermove.co.uk
www.bettermove.co.uk