



**Bury Road
Gosport
Hampshire
PO12**

Offers In Excess Of £415,000

bettermove

Bury Road Gosport

Bettermove are proud to present this 5 bedroom semi-detached house in Gosport.

This property benefits from gas central heating, and partial double glazing, with ample off road parking available via the driveway.

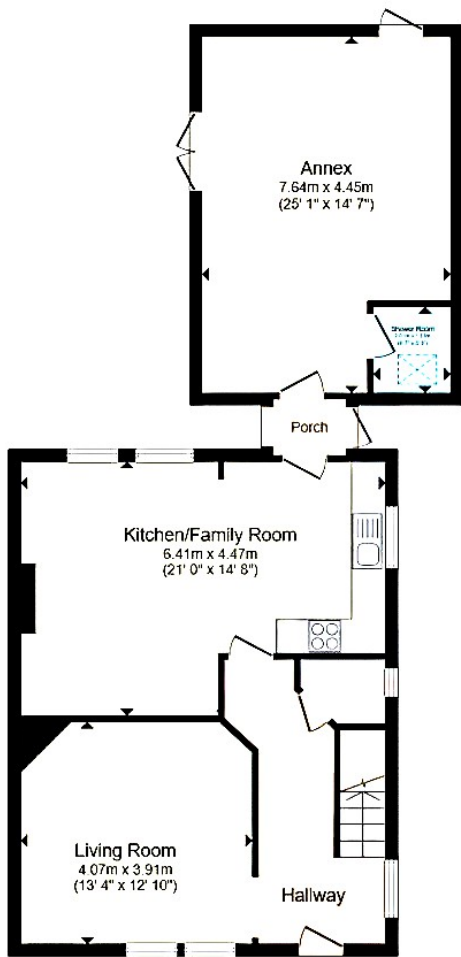
The council tax band is D.

The interior of this well-presented property comprises a spacious living room, fitted kitchen leading through to a dining room and a ground-floor shower room, along with access to a useful annex area providing additional flexibility. The first floor consists of four bedrooms, including three doubles, alongside a family bathroom. The exterior boasts a south-facing rear garden with patio and low-maintenance artificial lawn, perfect for enjoying the summer months. The property further benefits from a studio annex, with a wet room, and potential for a private courtyard.

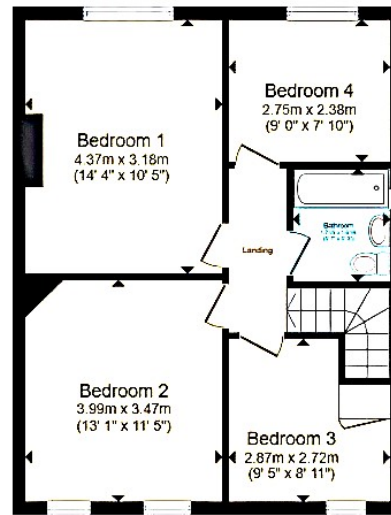
Located in the popular town of Gosport, the property is close to a range of amenities, including shops, supermarkets, restaurants, pubs, and schools. Excellent transport links can be found from Fareham Train Station (6.2 miles), a variety of local bus routes, and quick access to Portsmouth Harbour.

This exciting opportunity should not be missed! All enquiries can be made through Bettermove.

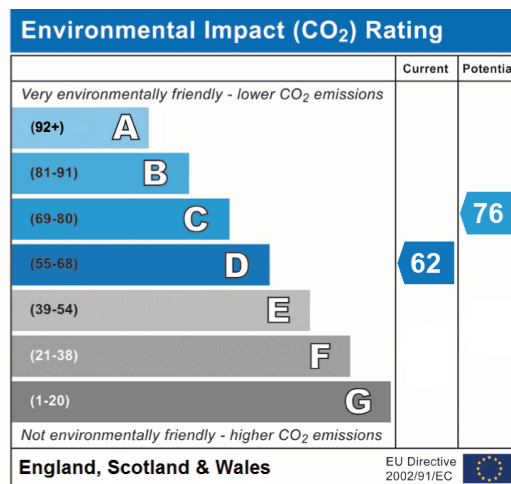
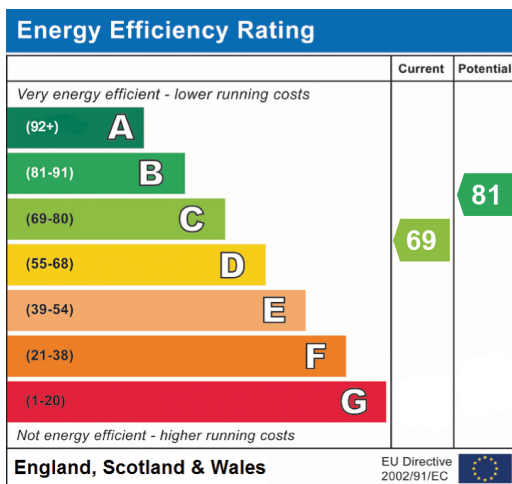




Ground Floor



First Floor





20-22 Bridge End, Leeds, LS1 4DJ
t: 0330 004 0050 e: hello@bettermove.co.uk
www.bettermove.co.uk