



**Langdale Crescent
Dalton-in-Furness
Cumbria
LA15 8NN**

Offers In Excess Of £245,000

bettermove

Langdale Crescent Dalton-in-Furness

A SPACIOUS 3 Bedroom semi-detached house in Dalton-in-Furness, perfect for an ARRAY of BUYERS. Call to enquire!

Bettermove are proud to present this 3 bedroom semi-detached house in Dalton-in-Furness.

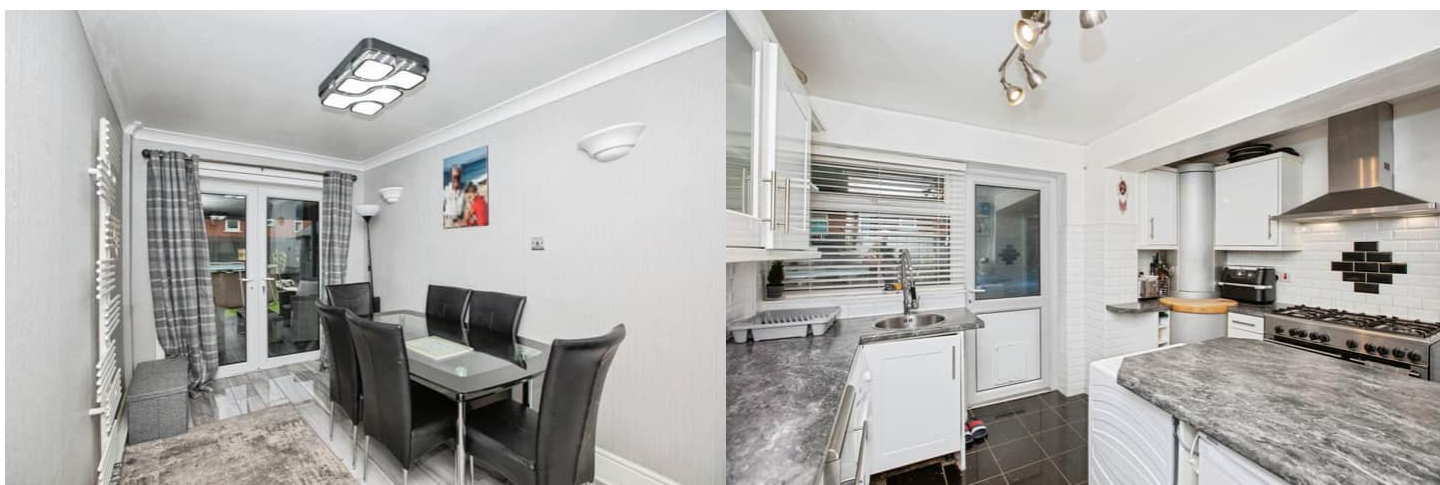
This property benefits from double glazing, off street parking and gas central heating throughout.

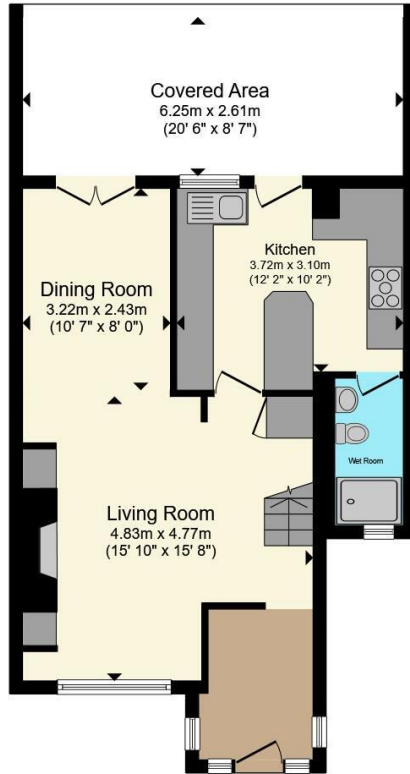
The council tax band is B.

The interior of this property comprises of 3 double bedrooms and family bathroom to the first floor. The ground floor holds a spacious open plan living/dining area, fitted kitchen and shower room. Outside, the property boasts a good sized garden, perfect for enjoying the summer months.

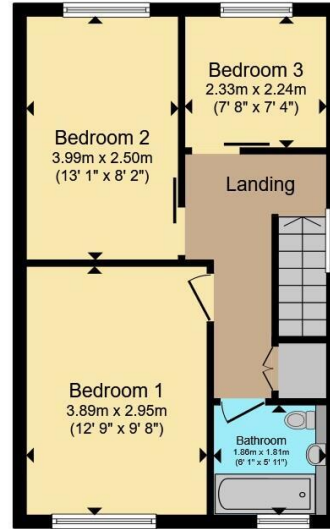
Located in Dalton-in-Furness, the property is close to a range of amenities, including shops, supermarkets, restaurants, and pubs. Excellent transport links can be found from Dalton Train Station , a variety of local bus routes, and the A580.

This exciting opportunity should not be missed! All enquiries can be made through Bettermove.





Ground Floor



First Floor

Total floor area 89.5 m² (964 sq.ft.) approx

This floor plan is for illustrative purposes only. It is not drawn to scale. Any measurements, floor areas (including any total floor area), openings and orientation are approximate. No details are guaranteed, they cannot be relied upon for any purpose and they do not form part of any agreement. No liability is taken for any error, omission or misstatement. A party must rely upon its own inspection(s). Powered by www.focalagent.com



20-22 Bridge End, Leeds, LS1 4DJ
t: 0330 004 0050 e: hello@bettermove.co.uk
www.bettermove.co.uk