



Middleham Close
Ouston
Chester-Le-Street
Durham
DH2

Offers In Excess Of £135,000

bettermove 

Middleham Close Chester-Le-Street

Bettermove are proud to present this 3 bedroom terraced house in Ouston.

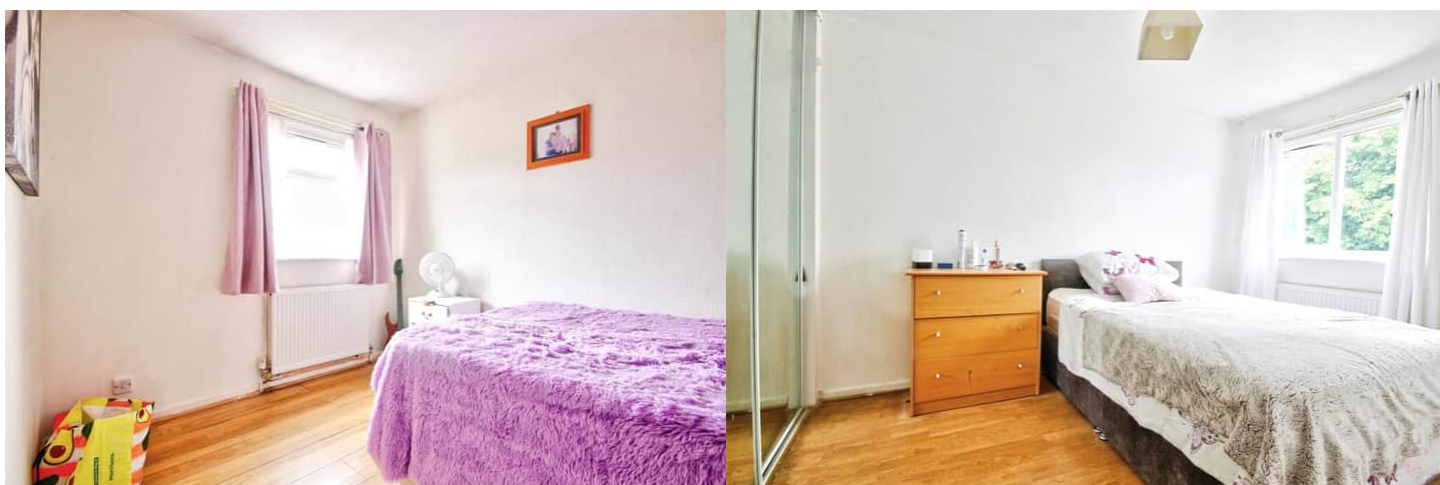
This property benefits from double glazing, and gas central heating throughout, with off road parking via a garage.

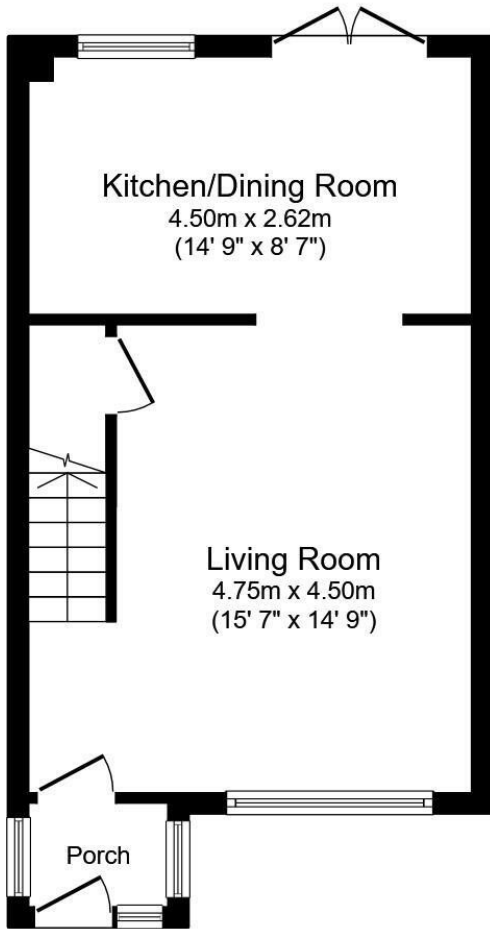
The council tax band is A.

The interior of this beautifully presented property comprises a spacious living room, and fitted kitchen/dining room on the ground floor. The first floor consists of three bedrooms, including two doubles, and one single, alongside the family bathroom. Outside, the property boasts a front lawned garden, and a private rear garden, with mainly laid with patio, perfect for enjoying the summer months.

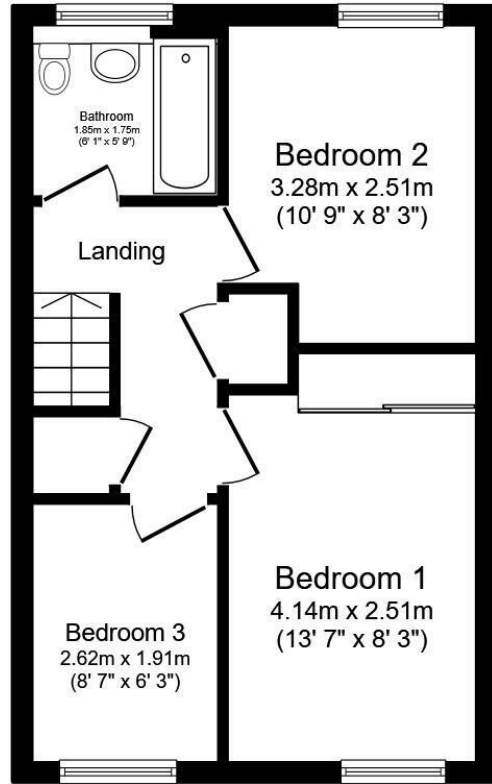
Located in the sought after village of Ouston, Chester-Le-Street, the property is close to a range of amenities, including shops, supermarkets, restaurants, pubs, and school. Excellent transport links can be found from Chester-Le-Street Train Station, a variety of local bus routes, and quick access to the A1(M).

This exciting opportunity should not be missed! All enquiries can be made through Bettermove.





Ground Floor



First Floor

Energy Efficiency Rating		
	Current	Potential
<i>Very energy efficient - lower running costs</i>		
(92+) A		
(81-91) B		
(69-80) C		
(55-68) D		
(39-54) E		
(21-38) F		
(1-20) G		
<i>Not energy efficient - higher running costs</i>		
	74	81
England, Scotland & Wales		
EU Directive 2002/91/EC		

Environmental Impact (CO ₂) Rating		
	Current	Potential
<i>Very environmentally friendly - lower CO₂ emissions</i>		
(92+) A		
(81-91) B		
(69-80) C		
(55-68) D		
(39-54) E		
(21-38) F		
(1-20) G		
<i>Not environmentally friendly - higher CO₂ emissions</i>		
	84	86
England, Scotland & Wales		
EU Directive 2002/91/EC		



20-22 Bridge End, Leeds, LS1 4DJ
t: 0330 004 0050 e: hello@bettermove.co.uk
www.bettermove.co.uk