



Mottram Moor
Mottram
Hyde
Cheshire
SK14

Offers In Excess Of £620,000

bettermove

Mottram Moor Hyde

Bettermove are proud to present this 5 bedroom semi-detached house in Mottram. Available with no forward chain.

The property benefits from double glazing, and gas central heating throughout, with off street parking available via the driveway.

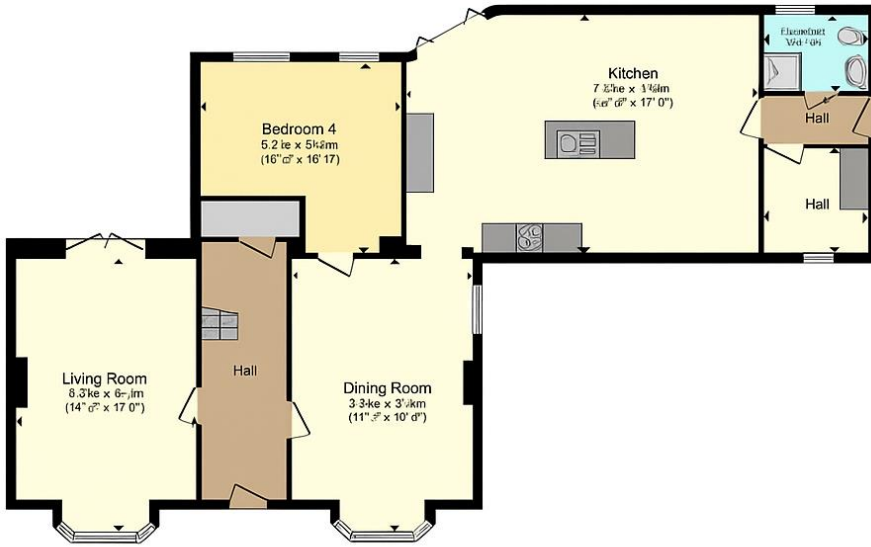
The council tax band is D.

The interior of this beautifully presented property comprises a spacious living room, dining room, downstairs WC, the first bedroom, utility room and fitted kitchen on the ground floor. The first floor consists of 4 bedrooms with the master bedroom including an en-suite and the family bathroom. The exterior boasts a private rear garden, perfect for enjoying the summer months, the exterior also includes 5 stables and a menage.

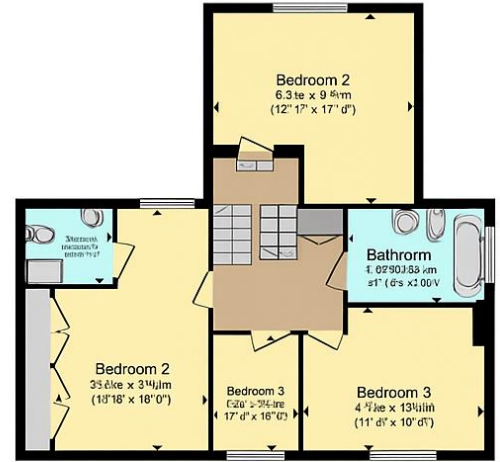
Located in the popular village of Mottram, the property is close to a range of amenities, including shops, supermarkets, restaurants and pubs. Excellent transport connections can be found from Broadbottom train station (1.8 miles), various bus routes and the M67.

This exciting opportunity should not be missed. All enquiries can be made through Bettermove.





Ground Floor



First Floor

Total floor area 182.9 m² (1.967 sq.ft.) approx

This floor plan is for illustrative purposes only. It is not drawn to scale. Any measurements, room areas (including any total floor area), openings and orientation are approximate. No details are guaranteed, they cannot be relied upon for any purpose and they do not form part of any agreement. No liability is taken for any error, omission or misstatement. A party must rely upon its own inspection(s). Powered by www.focalagent.com



20-22 Bridge End, Leeds, LS1 4DJ
t: 0330 004 0050 e: hello@bettermove.co.uk
www.bettermove.co.uk