



Oak Way  
Huntley  
Gloucester  
GL19

Offers in Excess of £280,000

bettermove



# Oak Way Gloucester

Bettermove are proud to present this 3 bedroom semi-detached in Huntley.

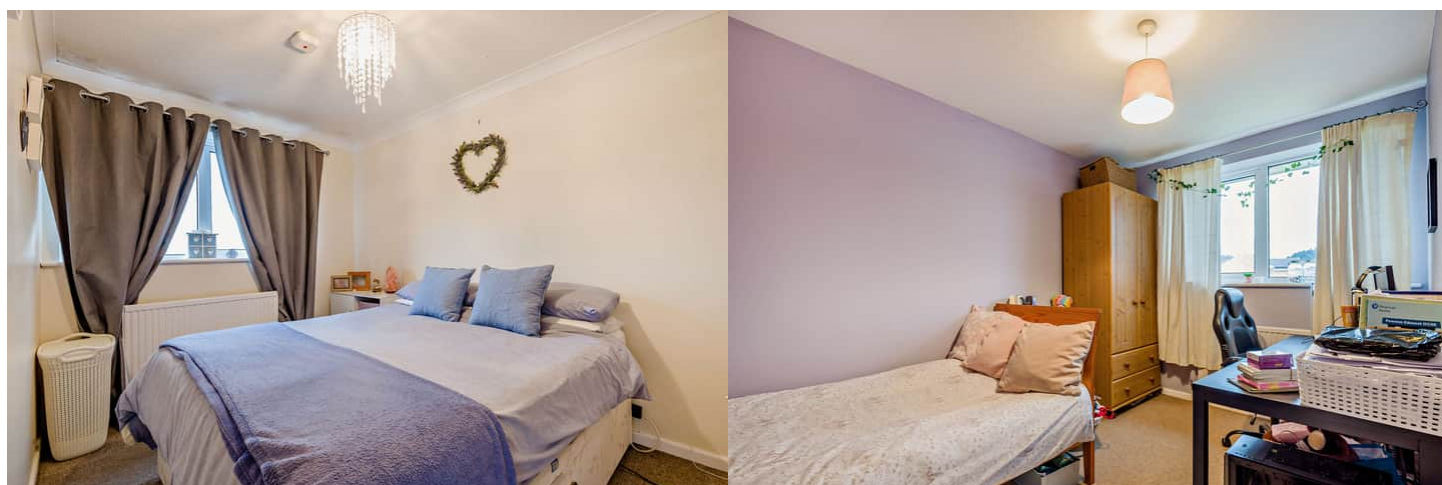
The property benefits from double glazing, and LPG gas heating throughout, with off street parking available via the driveway and garage.

The council tax band is C.

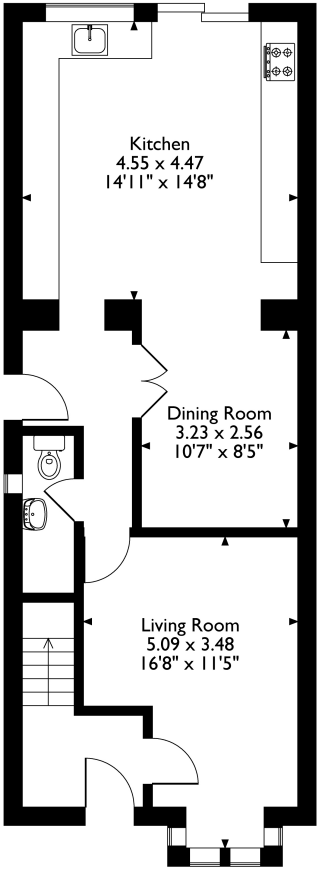
The interior of this beautifully presented property comprises a spacious living room, dining room, fitted kitchen, and WC on the ground floor. The first floor consists of three bedrooms, including two doubles, and one single, alongside the family bathroom. The exterior boasts a private rear garden, with both lawn and patio areas, perfect for enjoying the summer months.

Located in the popular civil parish of Huntley, Gloucester, the property is close to a range of amenities, including shops, supermarkets, restaurants and pubs. Excellent transport connections can be found from Gloucester Train Station, a variety of local bus routes, and quick access to the M5, and M50.

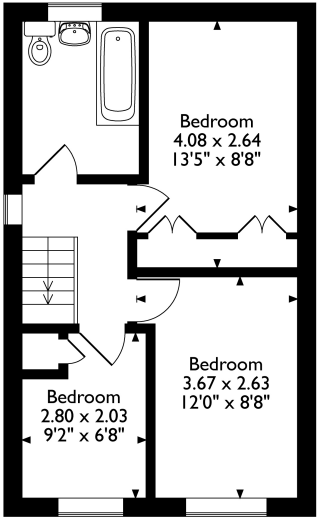
This exciting opportunity should not be missed. All enquiries can be made through Bettermove.



Oak Way, Huntley, Gloucester, Gloucestershire  
Approximate Gross Internal Area  
94 Sq M/1012 Sq Ft



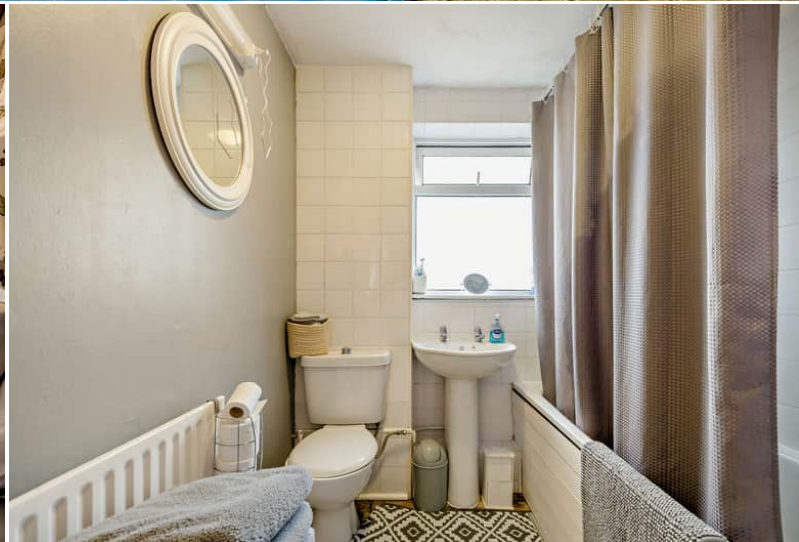
Ground Floor



First Floor

Please note that the location of doors, windows and other items are approximate and this floorplan is to be used for illustrative purposes only. Unauthorized reproduction is prohibited.





20-22 Bridge End, Leeds, LS1 4DJ  
t: 0330 004 0050 e: [hello@bettermove.co.uk](mailto:hello@bettermove.co.uk)  
[www.bettermove.co.uk](http://www.bettermove.co.uk)

Please Note: These particulars, whilst believed to be accurate are set out as a general outline only for guidance and do not constitute any part of an offer or contract. Intending purchasers should not rely on them as statements of representations of fact, but must satisfy themselves by inspection or otherwise as to their accuracy. No person in this firm's employment has the authority to make or give any representation or warranty in respect of the property.