



Bridge Street  
Llanfyllin  
Powys  
SY22

Offers in Excess of £165,000

bettermove



# Bridge Street Llanfyllin

Bettermove are proud to present this 4 bedroom Grade II Listed terraced house in Llanfyllin.

The property benefits from double glazing, solar panels and gas central heating throughout.

The council tax band is B.

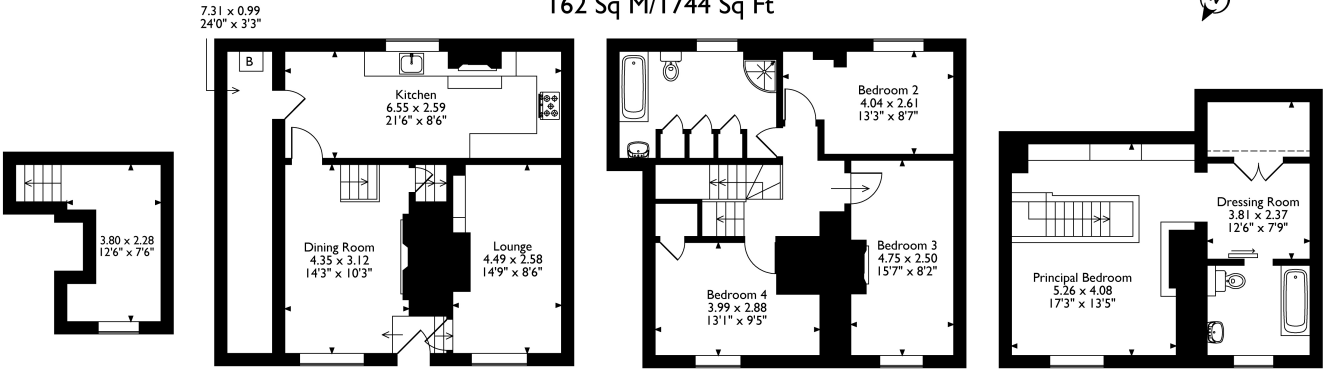
The interior of this well presented property combines modern living with period features, and comprises a spacious living room, dining room and fitted kitchen on the ground floor, with access to the cellar. The first floor consists of three double bedrooms and the family bathroom, with the master bedroom, alongside a dressing room, and en-suite, located on the second floor.

Located in the popular town of Llanfyllin, the property is close to a range of amenities, including shops, supermarkets, restaurants and pubs. Excellent transport connections can be found from Welshpool Train Station, a variety of local bus routes, and quick access to the A483.

This exciting opportunity should not be missed. All enquiries can be made through Bettermove.



Melbourne House, Bridge Street, Llanfyllin  
Approximate Gross Internal Area  
162 Sq M/1744 Sq Ft



Cellar

Ground Floor

First Floor

Second Floor

Please note that the location of doors, windows and other items are approximate and this floorplan is to be used for illustrative purposes only. Unauthorized reproduction is prohibited.





20-22 Bridge End, Leeds, LS1 4DJ  
t: 0330 004 0050 e: [hello@bettermove.co.uk](mailto:hello@bettermove.co.uk)  
[www.bettermove.co.uk](http://www.bettermove.co.uk)