



Orchard Grove  
Bradford  
West Yorkshire  
BD10

Offers in Excess of £152,000

bettermove



# Orchard Grove

## Bradford

Bettermove are proud to present this 3 bedroom semi-detached house in Bradford, available with no forward chain.

The property benefits from double glazing, and gas central heating throughout, with on street parking available.

The council tax band is A.

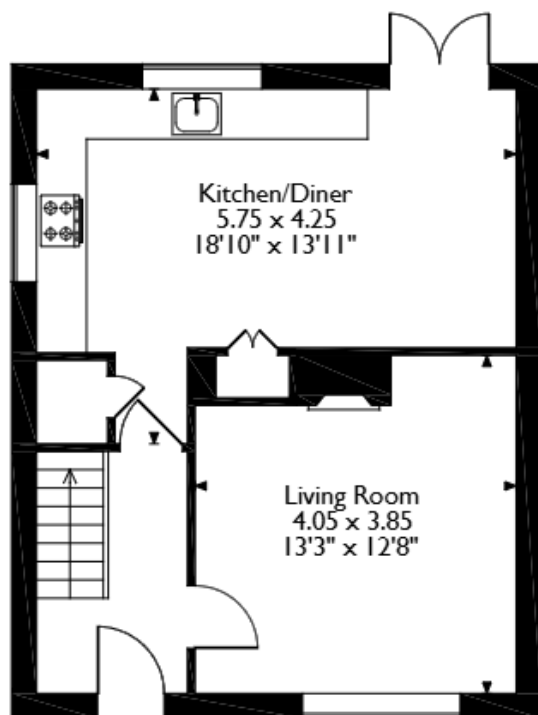
The interior of this well presented property comprises a spacious living room, and fitted kitchen/diner on the ground floor. The first floor consists of three bedrooms, including two doubles, and one single, alongside the family bathroom. The exterior boasts a front lawned garden, and a private rear garden, with views of the surrounding fields, perfect for enjoying the summer months.

Located in the popular city of Bradford, the property is close to a range of amenities, including shops, supermarkets, restaurants and pubs. Excellent transport connections can be found from Apperley Bridge Train Station, a variety of local bus routes, and quick access to the M62.

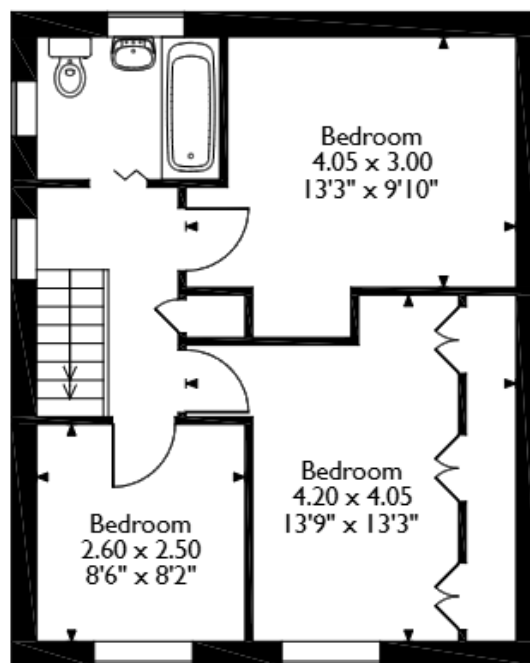
This exciting opportunity should not be missed. All enquiries can be made through Bettermove.



Orchard Grove, Bradford  
Approximate Gross Internal Area  
84 Sq M/904 Sq Ft



**Ground Floor**



**First Floor**

Please note that the location of doors, windows and other items are approximate and this floorplan is to be used for illustrative purposes only. Unauthorized reproduction is prohibited.





20-22 Bridge End, Leeds, LS1 4DJ  
t: 0330 004 0050 e: hello@bettermove.co.uk  
[www.bettermove.co.uk](http://www.bettermove.co.uk)