



**Tunwell Avenue
Sheffield
South Yorkshire
S5**

Offers In Excess Of £180,000

bettermove

Tunwell Avenue Sheffield

Bettermove are proud to present this 3 bedroom semi-detached in Sheffield.

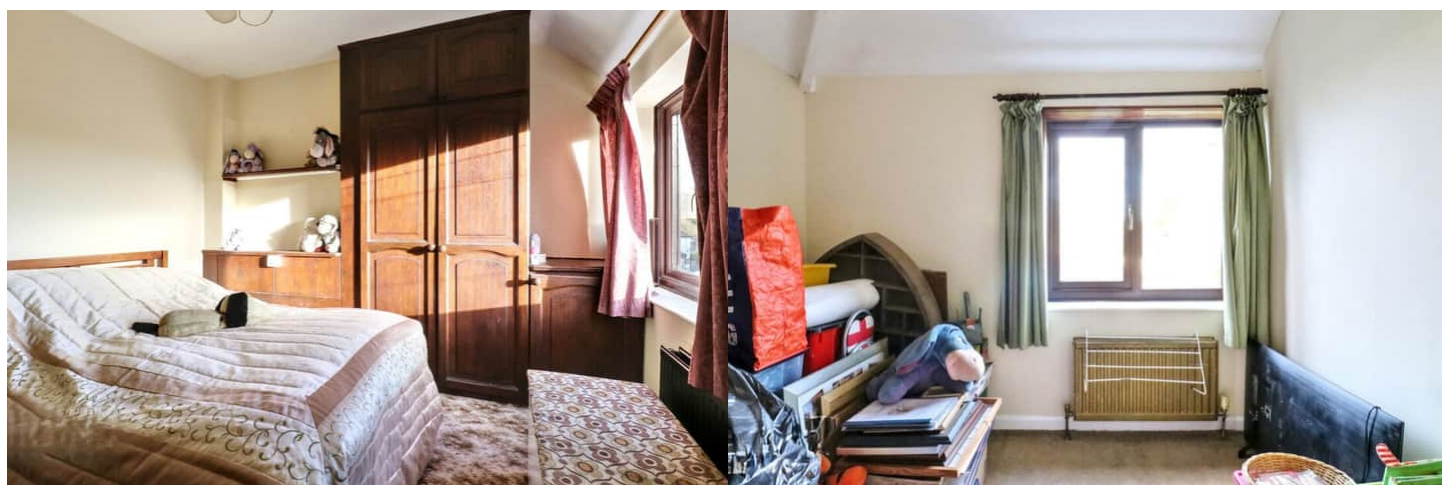
The property benefits from double glazing, and gas central heating throughout, with off street parking available via driveway.

The council tax band is A.

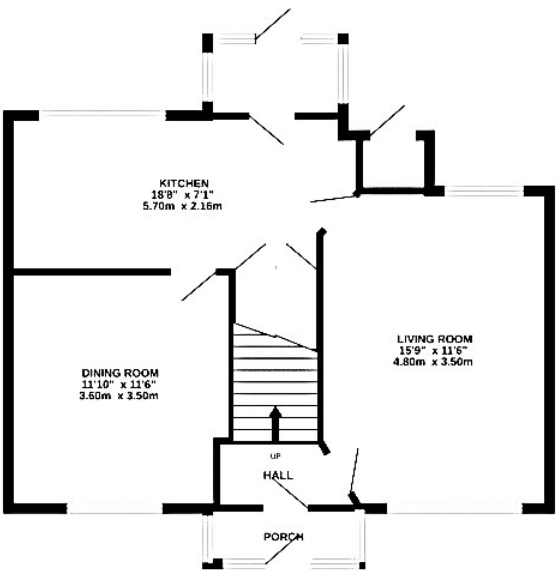
The interior of this beautifully presented property comprises a spacious living room, dining room and fitted kitchen on the ground floor. The first floor consists of three double bedrooms and the family bathroom. The exterior boasts a private rear garden, mainly laid to lawn, perfect for enjoying the summer months.

Located in the popular city of Sheffield, the property is close to a range of amenities, including shops, supermarkets, restaurants and pubs. Excellent transport connections can be found from Meadowhall Train Station, a variety of local bus routes, and quick access to the M1.

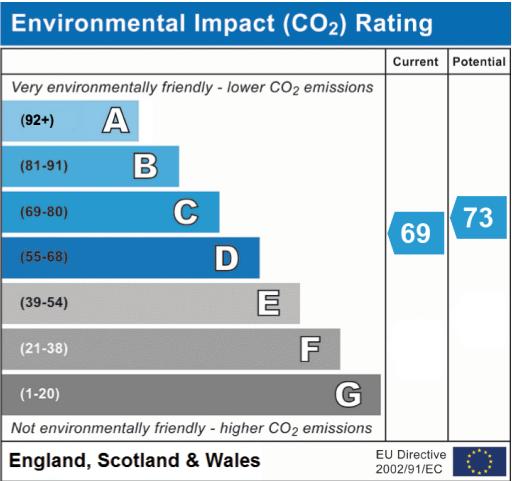
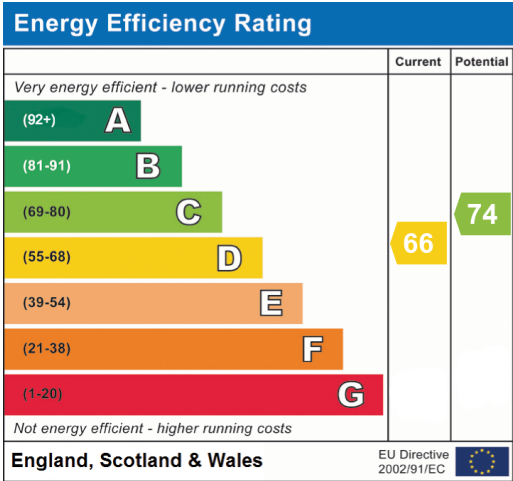
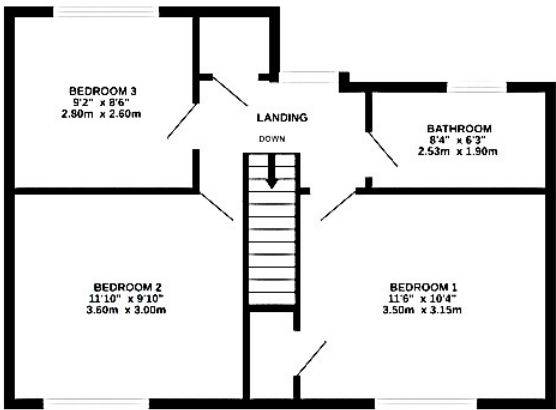
This exciting opportunity should not be missed. All enquiries can be made through Bettermove.



GROUND FLOOR



1ST FLOOR





20-22 Bridge End, Leeds, LS1 4DJ
t: 0330 004 0050 e: hello@bettermove.co.uk
www.bettermove.co.uk