



Nursery Close
Sheerness
Kent
ME12

Offers in Excess of £260,000

bettermove

Nursery Close Sheerness

Bettermove are proud to present this 3 bedroom semi-detached in Sheerness.

The property benefits from double glazing, solar panels, and gas central heating throughout, with off street parking available via the driveway.

The council tax band is D.

The interior of this beautifully presented property comprises a spacious living room, fitted kitchen, family bathroom, garden room, and utility room, with access to the garage, on the ground floor. The first floor consists of three bedrooms, including two doubles, and one single, with the master bedroom benefitting from a private en-suite, and a dressing room. The exterior boasts a private, low maintenance garden, perfect for enjoying the summer months.

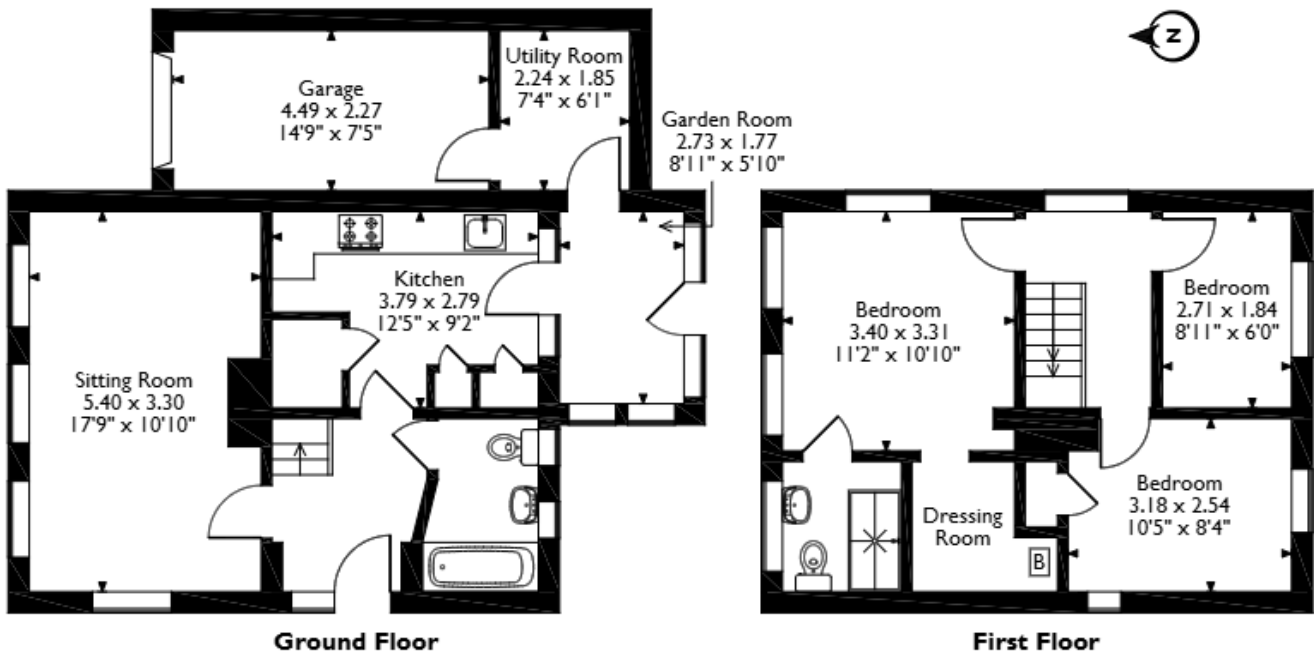
Located in the popular coastal town of Sheerness, the property is close to a range of amenities, including shops, supermarkets, restaurants, pubs, schools, and a short distance to the seafront. Excellent transport connections can be found from Sheerness-on-Sea Train Station, a variety of local bus routes, and quick access to the A249, leading to the M2.

This exciting opportunity should not be missed. All enquiries can be made through Bettermove.

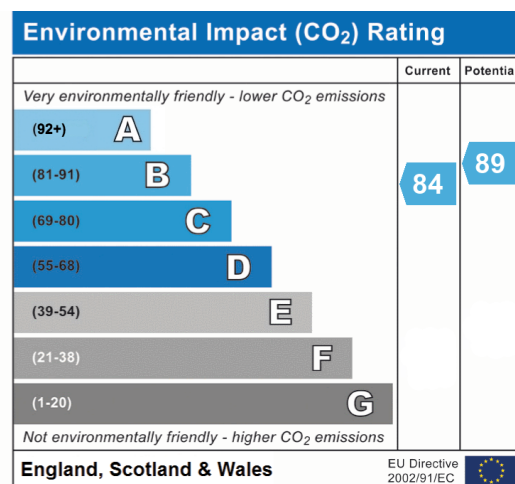
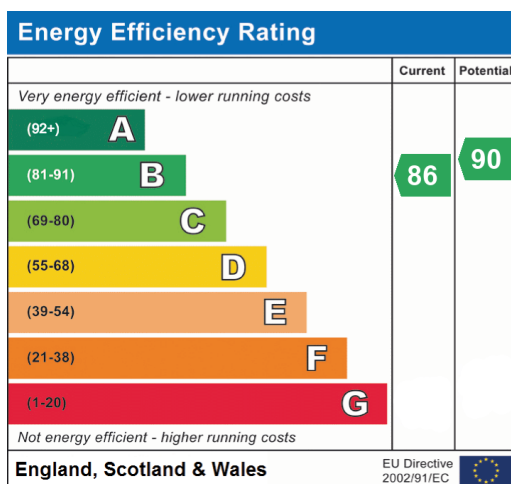


Nursery Close, Sheerness, Kent

Approximate Gross Internal Area 100 Sq M/1077 Sq Ft



Please note that the location of doors, windows and other items are approximate and this floorplan is to be used for illustrative purposes only. Unauthorized reproduction is prohibited.





20-22 Bridge End, Leeds, LS1 4DJ
t: 0330 004 0050 e: hello@bettermove.co.uk
www.bettermove.co.uk

Please Note: These particulars, whilst believed to be accurate are set out as a general outline only for guidance and do not constitute any part of an offer or contract. Intending purchasers should not rely on them as statements of representations of fact, but must satisfy themselves by inspection or otherwise as to their accuracy. No person in this firm's employment has the authority to make or give any representation or warranty in respect of the property.