



**Parliament Street
Gloucester
GL1**

Offers in Excess of £225,000

bettermove

Parliament Street Gloucester

Bettermove are proud to present this 3 bedroom terraced house in Gloucester, available with no forward chain.

The property is currently tenanted and can be sold with tenants in situ for immediate investment, or vacant on possession. Rental yields can be obtained through Bettermove.

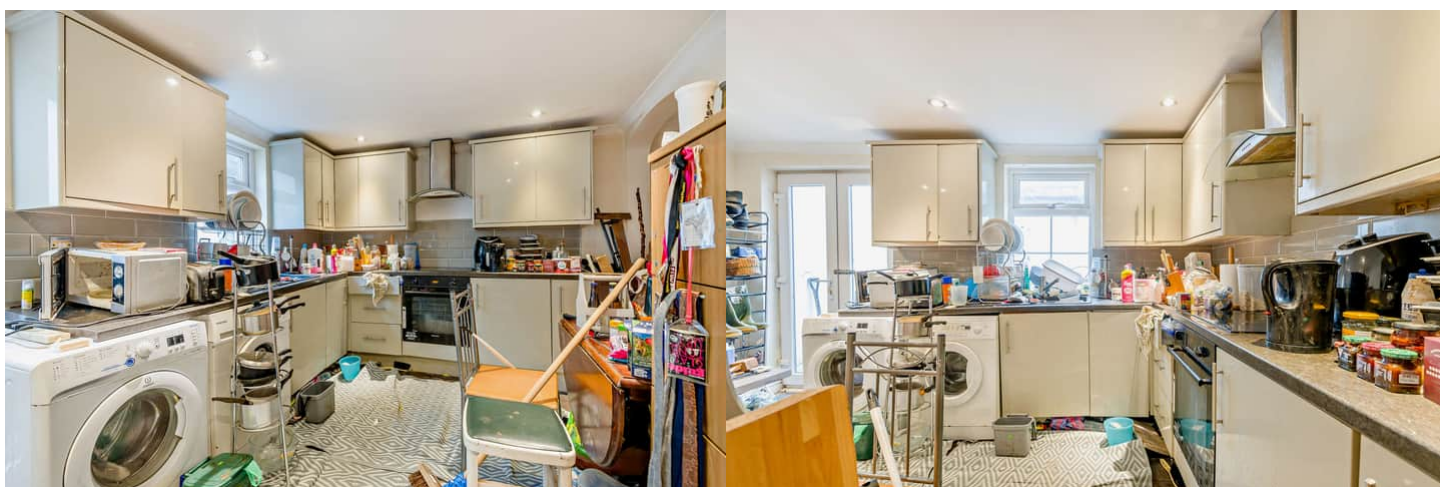
The property benefits from double glazing, and gas central heating throughout, with off street parking available via the driveway.

The council tax band is B.

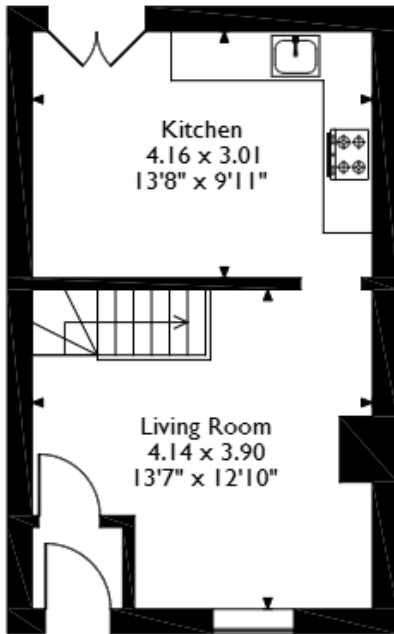
The interior of this beautifully presented property comprises a spacious living room, and fitted kitchen on the ground floor. The first floor consists of two bedrooms and the family bathroom, with the loft space converted, ideal for an additional bedroom. The exterior boasts a private rear garden, mainly laid with decking, perfect for enjoying the summer months.

Located in the popular city of Gloucester, the property is close to a range of amenities, including shops, supermarkets, restaurants and pubs. Excellent transport connections can be found from Gloucester Train Station, a variety of local bus routes, and quick access to the M5.

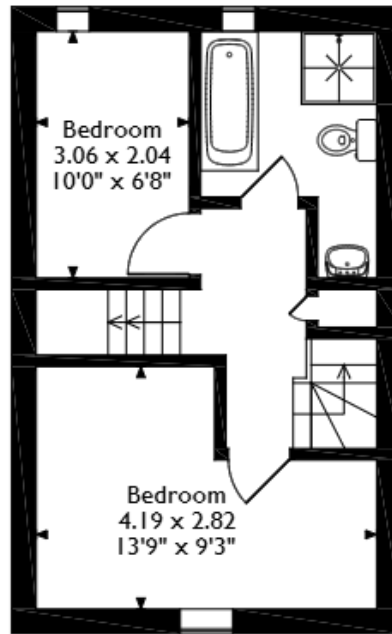
This exciting opportunity should not be missed. All enquiries can be made through Bettermove.



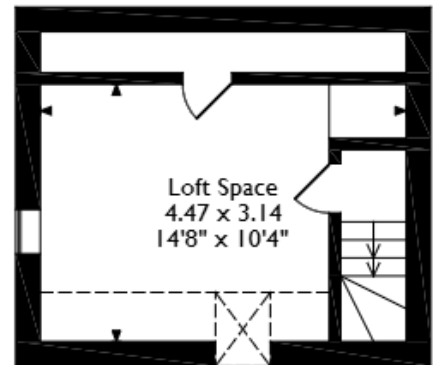
Parliament Street, Gloucester, Gloucestershire
Approximate Gross Internal Area
72 Sq M/775 Sq Ft



Ground Floor

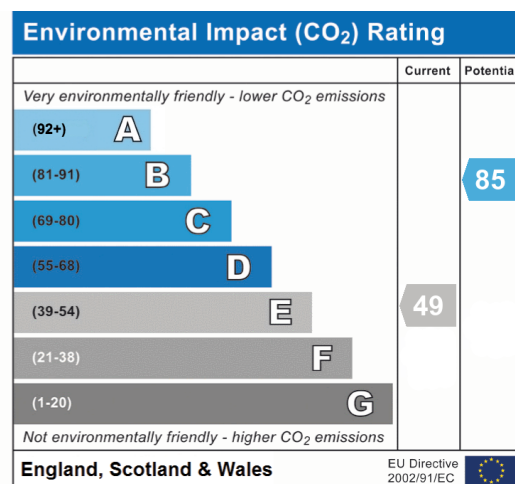
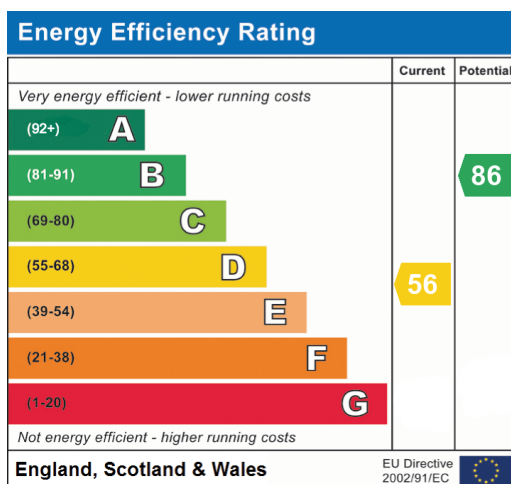


First Floor



Top Floor

Please note that the location of doors, windows and other items are approximate and this floorplan is to be used for illustrative purposes only. Unauthorized reproduction is prohibited.





20-22 Bridge End, Leeds, LS1 4DJ
 t: 0330 004 0050 e: hello@bettermove.co.uk
www.bettermove.co.uk

Please Note: These particulars, whilst believed to be accurate are set out as a general outline only for guidance and do not constitute any part of an offer or contract. Intending purchasers should not rely on them as statements of representations of fact, but must satisfy themselves by inspection or otherwise as to their accuracy. No person in this firm's employment has the authority to make or give any representation or warranty in respect of the property.