



Moss House Court
Mosborough
Sheffield
South Yorkshire
S20

Offers in Excess of £126,000

bettermove

Moss House Court Sheffield

Bettermove are proud to present this 2 bedroom flat in Mosborough, available with no forward chain.

The property benefits from double glazing, and gas central heating throughout, with two reserved parking spaces available.

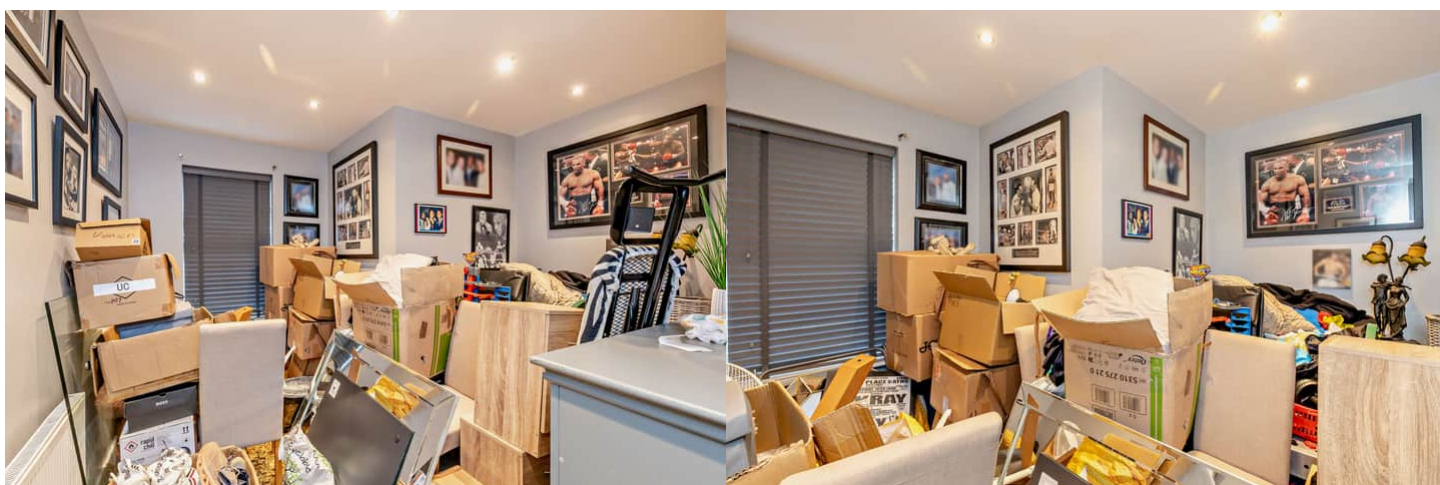
The council tax band is B.

This is a leasehold property with 980 years remaining on the lease.

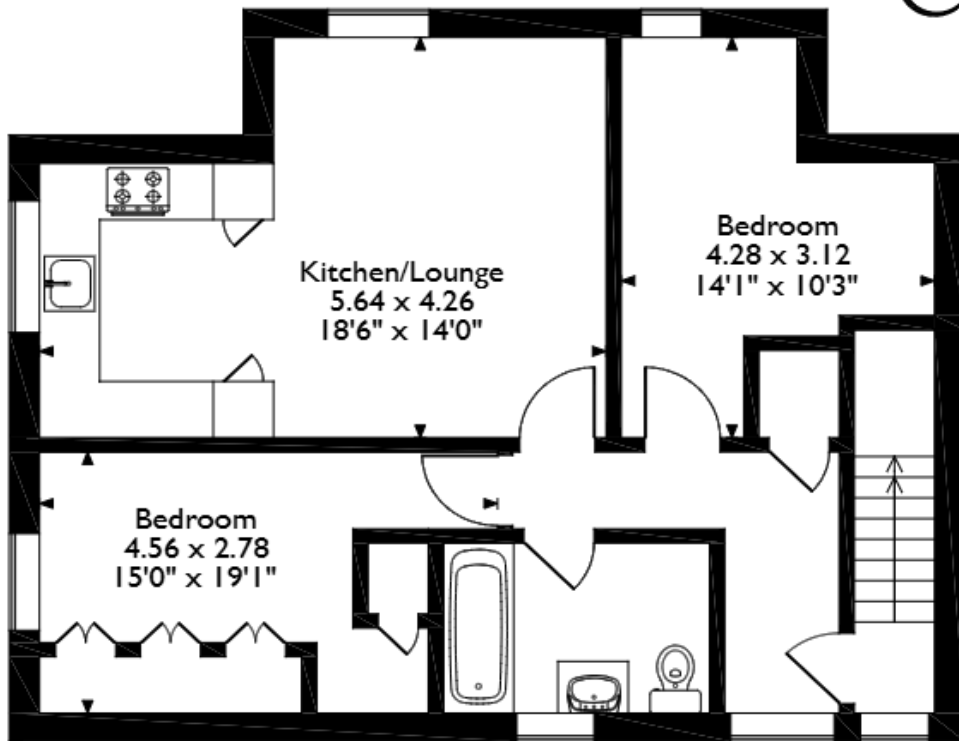
The interior of this well presented, first floor property comprises an open-plan living/kitchen area, two double bedrooms, and a family bathroom.

Located in the popular borough of Mosborough, Sheffield, the property is close to a range of amenities, including shops, supermarkets, restaurants and pubs. Excellent transport connections can be found from Halfway tram stop, giving links on the blue line, Dronfield train station, a variety of local bus routes, and quick access to the M1.

This exciting opportunity should not be missed. All enquiries can be made through Bettermove.





Moss House Court, Mosborough, Sheffield
Approximate Gross Internal Area
59 Sq M/635 Sq Ft



First Floor Flat

Please note that the location of doors, windows and other items are approximate and this floorplan is to be used for illustrative purposes only. Unauthorized reproduction is prohibited.

| Energy Efficiency Rating | | |
|---|---|-----------|
| | Current | Potential |
| Very energy efficient - lower running costs | | |
| (92+) A | | |
| (81-91) B | 84 | 85 |
| (69-80) C | | |
| (55-68) D | | |
| (39-54) E | | |
| (21-38) F | | |
| (1-20) G | | |
| Not energy efficient - higher running costs | | |
| England, Scotland & Wales | EU Directive 2002/91/EC  | |

| Environmental Impact (CO ₂) Rating | | |
|---|---|-----------|
| | Current | Potential |
| Very environmentally friendly - lower CO ₂ emissions | | |
| (92+) A | | |
| (81-91) B | 83 | 84 |
| (69-80) C | | |
| (55-68) D | | |
| (39-54) E | | |
| (21-38) F | | |
| (1-20) G | | |
| Not environmentally friendly - higher CO ₂ emissions | | |
| England, Scotland & Wales | EU Directive 2002/91/EC  | |



20-22 Bridge End, Leeds, LS1 4DJ
t: 0330 004 0050 e: hello@bettermove.co.uk
www.bettermove.co.uk