



Ratten Row
Hunton
Bedale
North Yorkshire
DL8

Offers in Excess of £225,000

bettermove

Ratten Row

Bedale

Bettermove are proud to present this 3 bedroom terraced cottage in Hunton, available with no forward chain.

The property benefits from a wood burner, and double glazing throughout, with on street parking available.

The council tax band is B.

The interior of this property, which requires modernisation throughout, comprises a spacious living room, fitted kitchen, and family bathroom on the ground floor. The first floor consists of three bedrooms, including two doubles, and one single. The exterior boasts an outbuilding, ideal for additional storage, and a private rear garden, mainly laid to lawn, perfect for enjoying the summer months.

Located in the quiet village of Hunton, Bedale, the property is close to a range of amenities, including shops, supermarkets, restaurants and pubs. Excellent transport connections can be found from Northallerton Train Station (13.7 miles), a variety of local bus routes, and quick access to the A1(M).

This exciting opportunity should not be missed. All enquiries can be made through Bettermove.



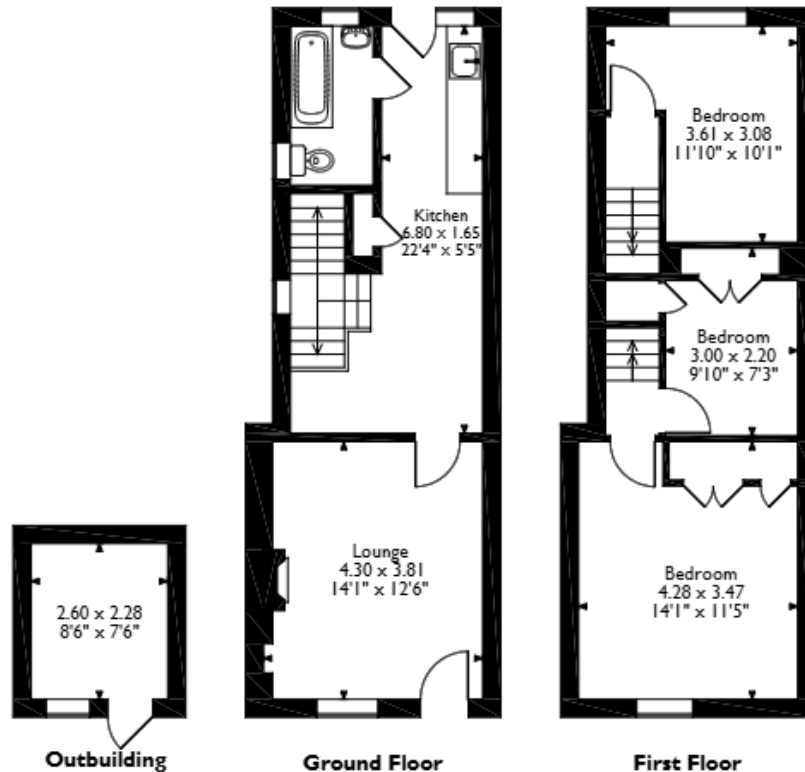
The Cottage, Ratten Row, Hunton, Bedale

Approximate Gross Internal Area

Main House = 76 Sq M/818 Sq Ft

Outbuilding = 6 Sq M/65 Sq Ft

Total = 82 Sq M/883 Sq Ft



Please note that the location of doors, windows and other items are approximate and this floorplan is to be used for illustrative purposes only. Unauthorized reproduction is prohibited.



20-22 Bridge End, Leeds, LS1 4DJ
t: 0330 004 0050 e: hello@bettermove.co.uk
www.bettermove.co.uk

Please Note: These particulars, whilst believed to be accurate are set out as a general outline only for guidance and do not constitute any part of an offer or contract. Intending purchasers should not rely on them as statements of representations of fact, but must satisfy themselves by inspection or otherwise as to their accuracy. No person in this firm's employment has the authority to make or give any representation or warranty in respect of the property.