



**Oakamoor Close
Chesterfield
Derbyshire
S40**

Offers in Excess of £110,000

bettermove

Oakamoor Close Chesterfield

Bettermove are proud to present this 3 bedroom flat in Chesterfield, the property will be sold as seen, including all furniture.

The property benefits from double glazing, and gas central heating throughout, with on street parking available.

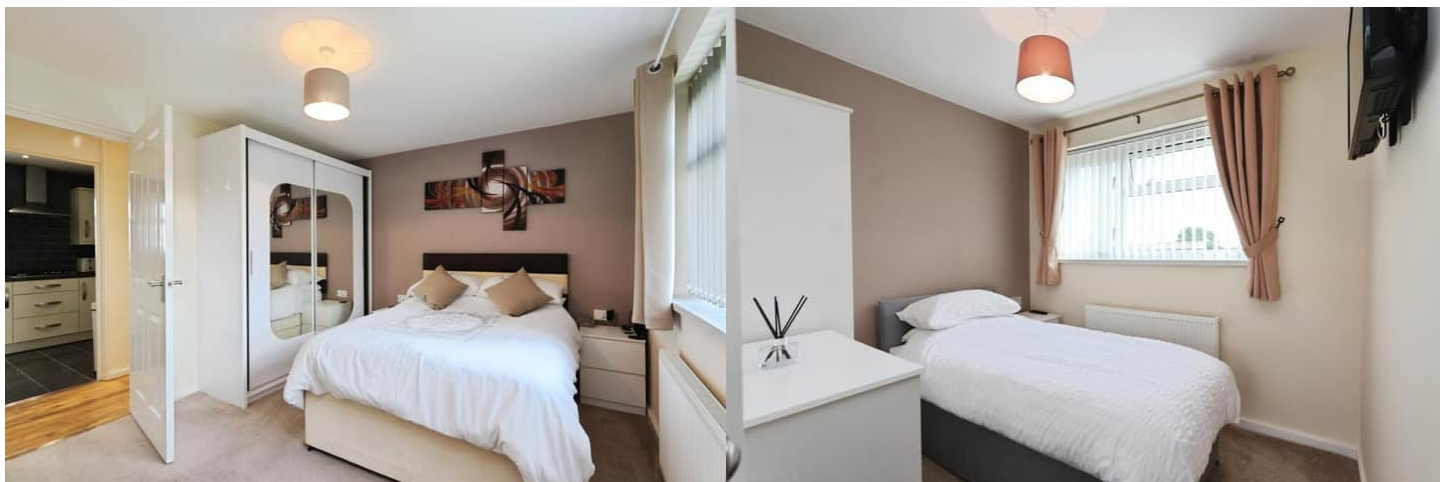
The council tax band is A.

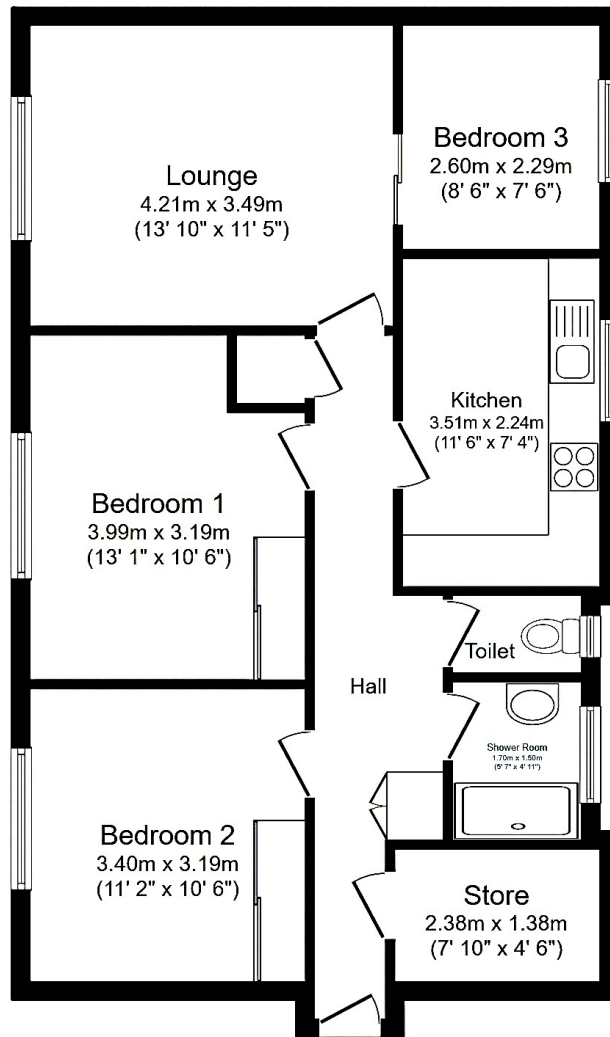
This is a leasehold property with 117 years remaining on the lease; the ground rent is £10.00 per annum, and the service charge is £200.00 per annum.

The interior of this beautifully presented, top floor property comprises a spacious living room, modern fitted kitchen, three bedrooms, including two doubles, and one generous single, alongside a shower room, and separate WC. The property also benefits from lovely views across the park and surrounding green spaces.

Located in the popular town of Chesterfield, the property is close to a range of amenities, including shops, supermarkets, restaurants and pubs. Excellent transport connections can be found from Chesterfield Train Station, a variety of local bus routes, and quick access to the M1.

This exciting opportunity should not be missed. All enquiries can be made through Bettermove.





Energy Efficiency Rating		
	Current	Potential
Very energy efficient - lower running costs		
(92+) A		
(81-91) B		
(69-80) C	76	78
(55-68) D		
(39-54) E		
(21-38) F		
(1-20) G		
Not energy efficient - higher running costs		
England, Scotland & Wales	EU Directive 2002/91/EC	

Environmental Impact (CO ₂) Rating		
	Current	Potential
Very environmentally friendly - lower CO ₂ emissions		
(92+) A		
(81-91) B		
(69-80) C	76	78
(55-68) D		
(39-54) E		
(21-38) F		
(1-20) G		
Not environmentally friendly - higher CO ₂ emissions		
England, Scotland & Wales	EU Directive 2002/91/EC	



20-22 Bridge End, Leeds, LS1 4DJ
 t: 0330 004 0050 e: hello@bettermove.co.uk
www.bettermove.co.uk