



Dark Lane  
Rodborough  
Stroud  
Gloucestershire  
GL5

Offers in Excess of £759,000

bettermove 



# Dark Lane Stroud

Bettermove are proud to present this 4 bedroom detached house in Rodborough.

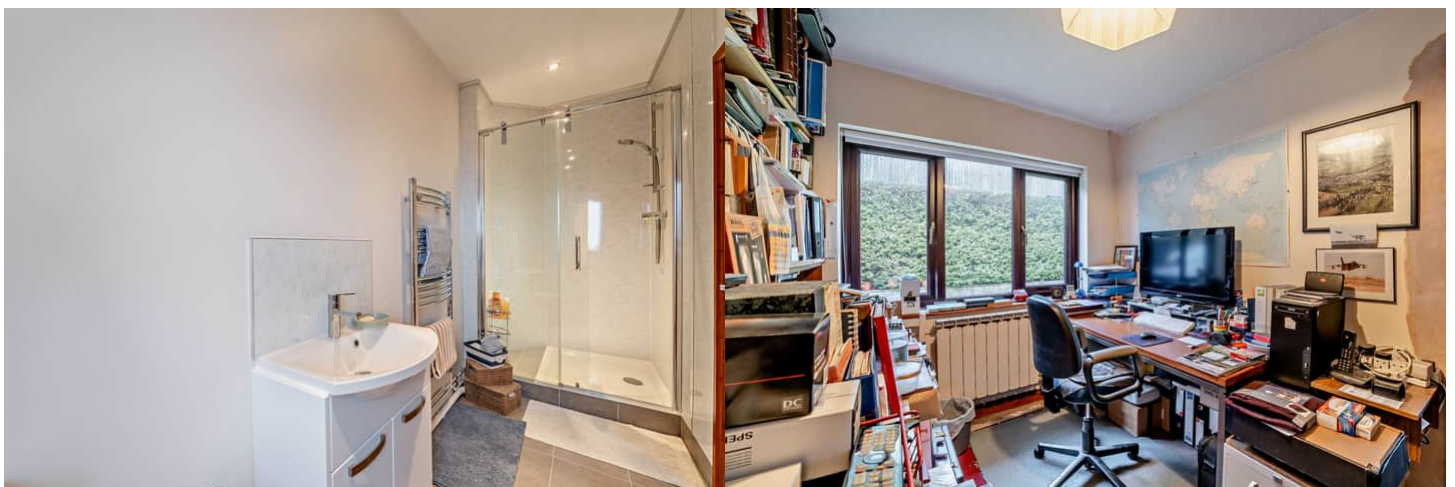
The property benefits from double glazing, and gas central heating throughout, with ample off road parking for 6 cars, available via the driveway.

The council tax band is F.

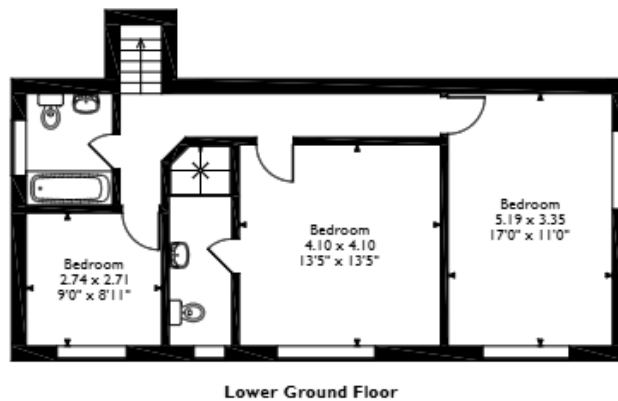
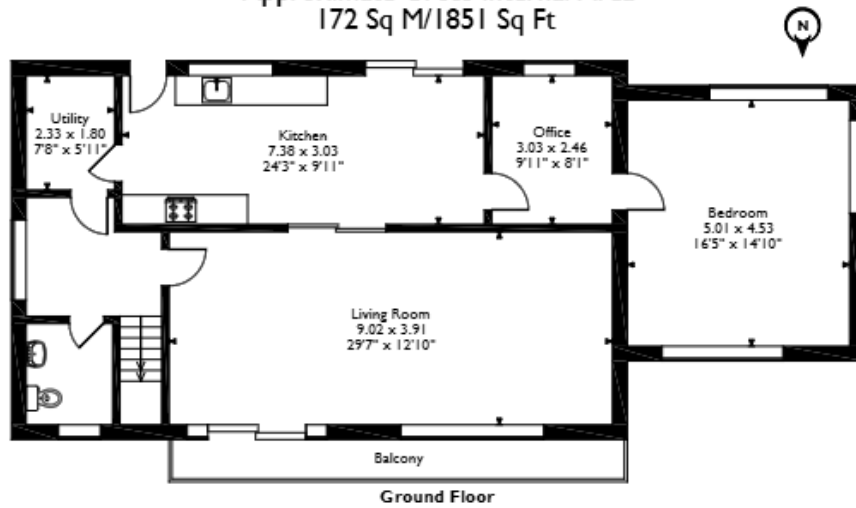
The interior of this beautifully presented property comprises a spacious living room, fitted kitchen, with attached utility room, office, WC, and one double bedroom on the ground floor. The lower ground floor consists of three bedrooms, with the master bedroom benefitting from a private en-suite, alongside bathroom. The exterior boasts a private balcony, with a fantastic panoramic view, accessible via the living room, perfect for enjoying the summer months.

Located in the sought after village of Rodborough, Stroud, the property is close to a range of amenities, including shops, supermarkets, restaurants and pubs. Excellent transport connections can be found from Stroud Train Station, a variety of local bus routes, and quick access to the M5.

This exciting opportunity should not be missed. All enquiries can be made through Bettermove.



Foxboro, Dark Lane, Rodborough, Stroud, Gloucestershire  
Approximate Gross Internal Area  
172 Sq M/1851 Sq Ft



Please note that the location of doors, windows and other items are approximate and this floorplan is to be used for illustrative purposes only. Unauthorized reproduction is prohibited.





20-22 Bridge End, Leeds, LS1 4DJ  
t: 0330 004 0050 e: [hello@bettermove.co.uk](mailto:hello@bettermove.co.uk)  
[www.bettermove.co.uk](http://www.bettermove.co.uk)