



Admiralty Crescent
Eastbourne
East Sussex
BN23

Offers in Excess of £350,000

bettermove 

Admiralty Crescent Eastbourne

Bettermove are proud to present this 3 bedroom townhouse in Eastbourne, available with no forward chain.

The property benefits from double glazing, and gas central heating throughout, with one parking space to the front of the property.

The council tax band is E.

The interior of this beautifully presented and versatile property comprises a ground floor bedroom with doors opening to the rear garden and a separate WC. The first floor offers a spacious kitchen/diner and lounge with French doors opening onto a balcony. The second floor consists of two bedrooms, including a master with en-suite, along with a separate family bathroom. The exterior boasts a raised decked area with steps leading down to a private rear garden, perfect for enjoying the summer months.

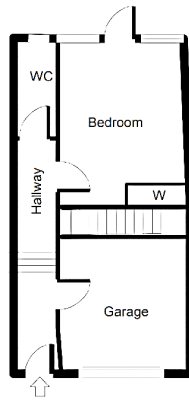
Located in the popular coastal town of Eastbourne, the property is close to a range of amenities, including shops, supermarkets, restaurants, pubs, schools, and a short distance to the seafront. Excellent transport connections can be found from Pevensey Bay (PEB) Train Station, a variety of local bus routes, and quick access to the A27.

This exciting opportunity should not be missed. All enquiries can be made through Bettermove.

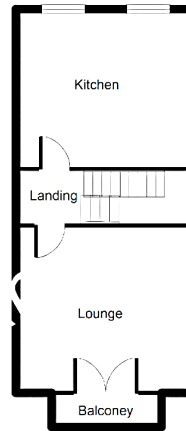


REAR

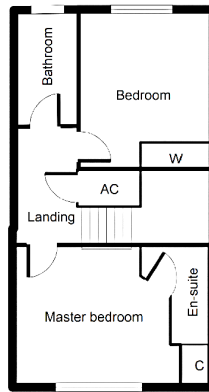
GROUND FLOOR



FIRST FLOOR

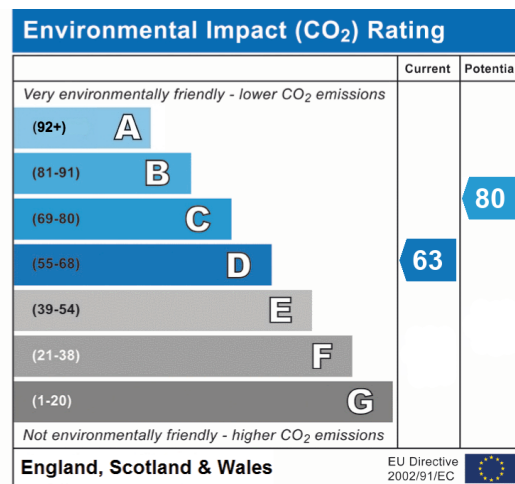
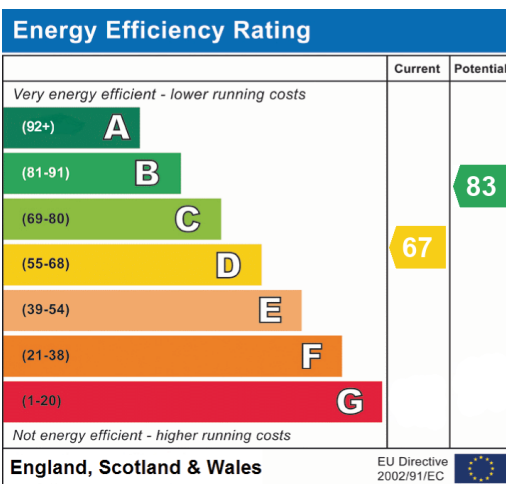


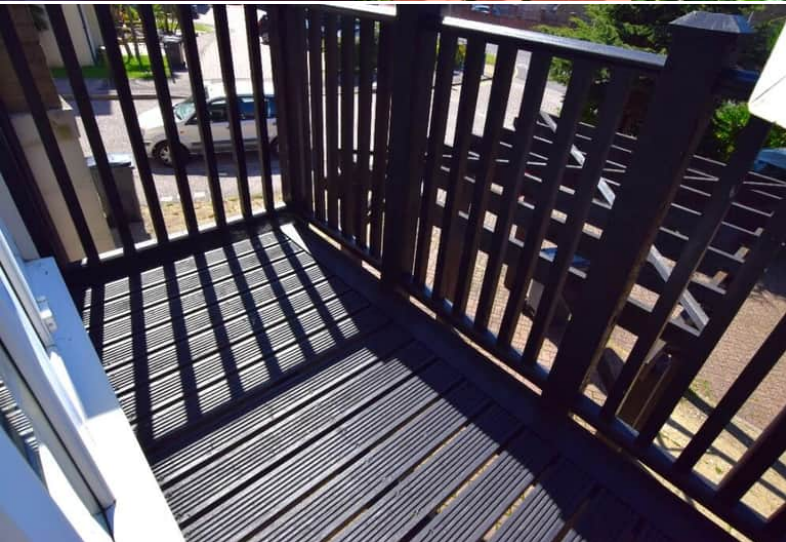
SECOND FLOOR



W = wardrobe
C = cupboard

FRONT





20-22 Bridge End, Leeds, LS1 4DJ
t: 0330 004 0050 e: hello@bettermove.co.uk
www.bettermove.co.uk

Please Note: These particulars, whilst believed to be accurate are set out as a general outline only for guidance and do not constitute any part of an offer or contract. Intending purchasers should not rely on them as statements of representations of fact, but must satisfy themselves by inspection or otherwise as to their accuracy. No person in this firm's employment has the authority to make or give any representation or warranty in respect of the property.