



**Grove Park  
Beverley  
East Riding of Yorkshire  
HU17**

**Offers in Excess of £168,000**

**bettermove**



# Grove Park

## Beverley

Bettermove are proud to present this 3 bedroom terraced house in Beverley, available with no forward chain.

The property benefits from double glazing, and gas central heating throughout, with on street parking available.

The council tax band is B.

The interior of this beautifully presented property comprises a spacious living room, dining room and fitted kitchen on the ground floor. The first floor consists of three bedrooms, including two doubles, and one single, alongside the family bathroom. The exterior boasts a separate garage, ideal for additional storage, and both front, and a private rear garden, perfect for enjoying the summer months.

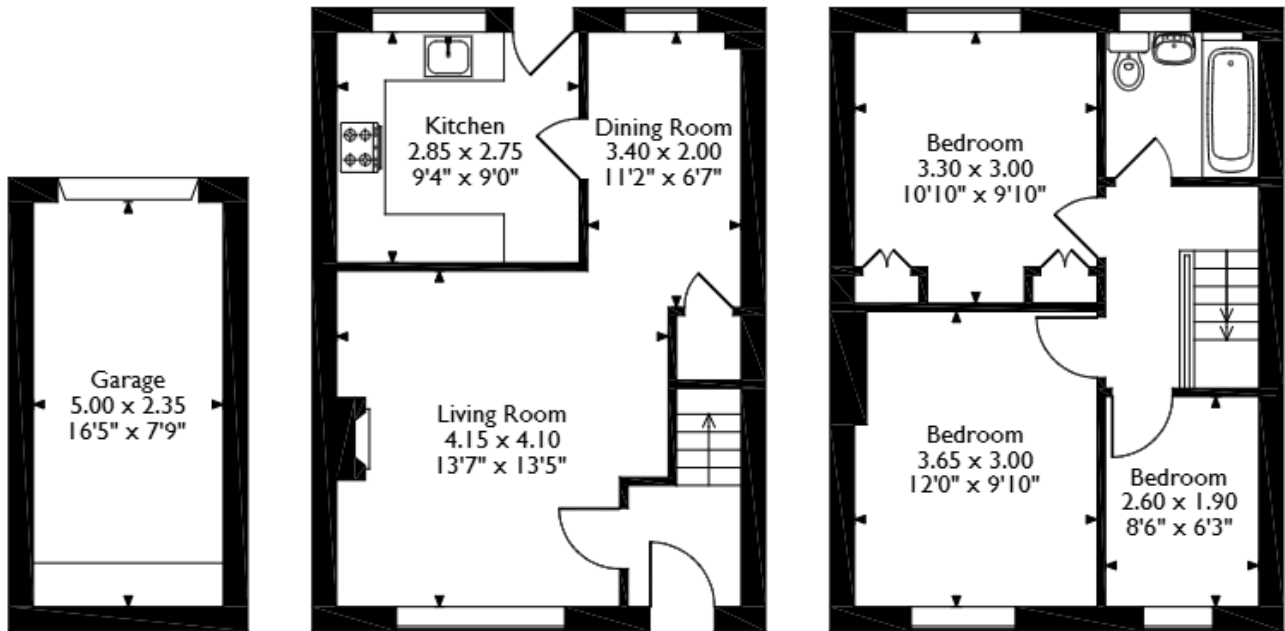
Located in the popular town of Beverley, the property is close to a range of amenities, including shops, supermarkets, restaurants, pubs, and schools. Excellent transport connections can be found from Beverley Train Station, a variety of local bus routes, and quick access to the A164, leading to the A63, and M62.

This exciting opportunity should not be missed. All enquiries can be made through Bettermove.

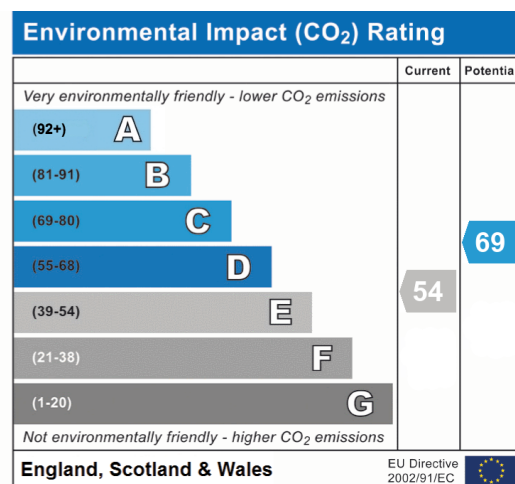
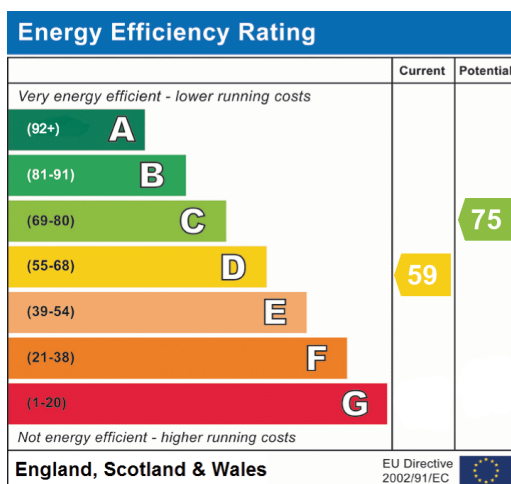


# Grove Park, Beverley

Approximate Gross Internal Area  
Main House = 72 Sq M/776 Sq Ft  
Garage = 12 Sq M/129 Sq Ft  
Total = 84 Sq M/905 Sq Ft



Please note that the location of doors, windows and other items are approximate and this floorplan is to be used for illustrative purposes only. Unauthorized reproduction is prohibited.







20-22 Bridge End, Leeds, LS1 4DJ  
t: 0330 004 0050 e: [hello@bettermove.co.uk](mailto:hello@bettermove.co.uk)  
[www.bettermove.co.uk](http://www.bettermove.co.uk)

Please Note: These particulars, whilst believed to be accurate are set out as a general outline only for guidance and do not constitute any part of an offer or contract. Intending purchasers should not rely on them as statements of representations of fact, but must satisfy themselves by inspection or otherwise as to their accuracy. No person in this firm's employment has the authority to make or give any representation or warranty in respect of the property.